

This map was prepared for Assessment & Taxation purposes only and was NOT prepared nor is it suitable for legal, engineering or surveying purposes.



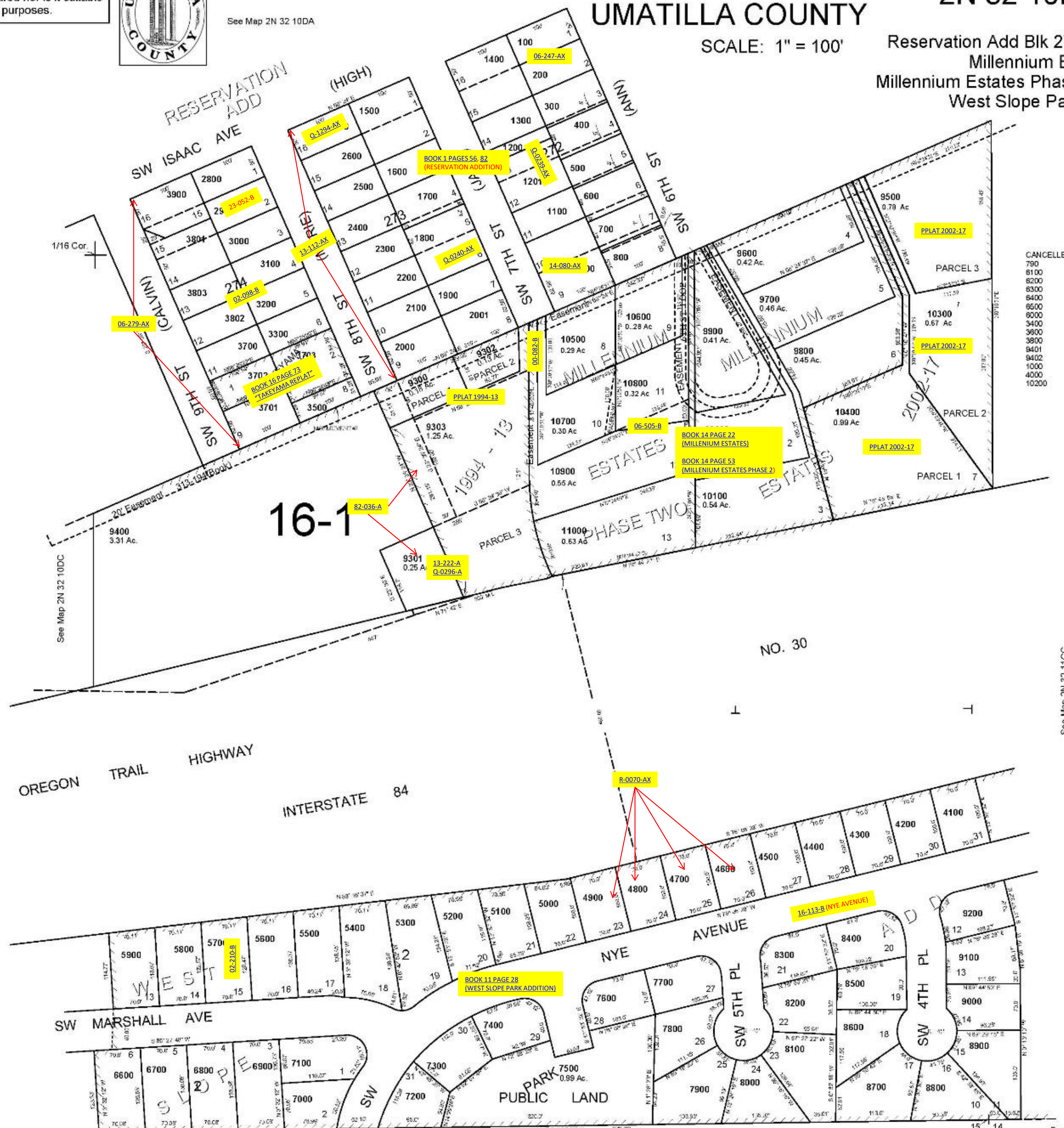
See Map 2N 32 10DA

# SE1/4 SE1/4 SEC10 T2N R32E WM UMATILLA COUNTY

## 2N 32 10DD

SCALE: 1" = 100'

Reservation Add Blk 272-274  
Millennium Estates  
Millennium Estates Phase Two  
West Slope Park Add



- CANCELED
- 790
  - 8100
  - 8200
  - 8300
  - 8400
  - 8500
  - 8600
  - 8700
  - 8800
  - 8900
  - 9000
  - 9100
  - 9200
  - 9300
  - 9400
  - 9500
  - 9600
  - 9700
  - 9800
  - 9900
  - 10000
  - 10100
  - 10200

OREGON TRAIL HIGHWAY  
INTERSTATE 84

NO. 30

See Map 2N 32

Revised: 12-06-18

S-115-A

## 2N 32 10DD