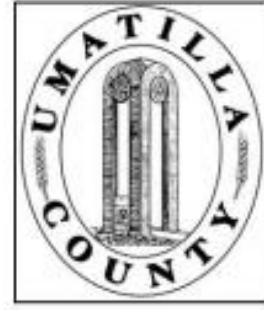


ALSO SEE SURVEYS 06-437-B, 06-629-B, 89-121-B, 90-050-C, 96-055-G, 99-023-B, D-004-A; CORNER RECORDS; G.L.O. SURVEYS

This map was prepared for Assessment & Taxation purposes only and was NOT prepared nor is it suitable for legal, engineering or surveying purposes.

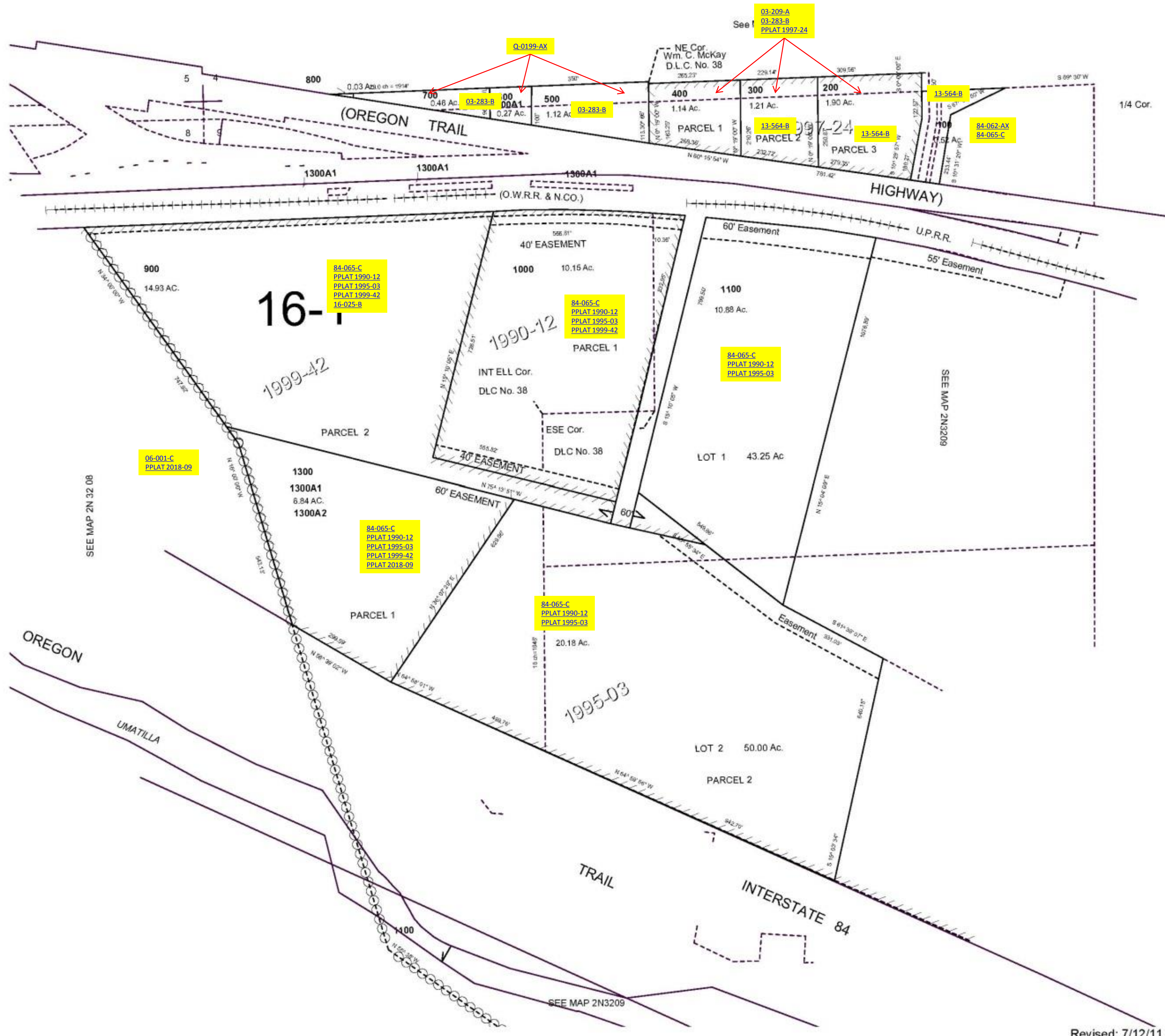


NW1/4 SEC 09 T2N R32E WM UMATILLA COUNTY

2N3209B

AERIAL PHOTO NO 4P-104

SCALE: 1" = 200



Revised: 7/12/11

2N3209B