

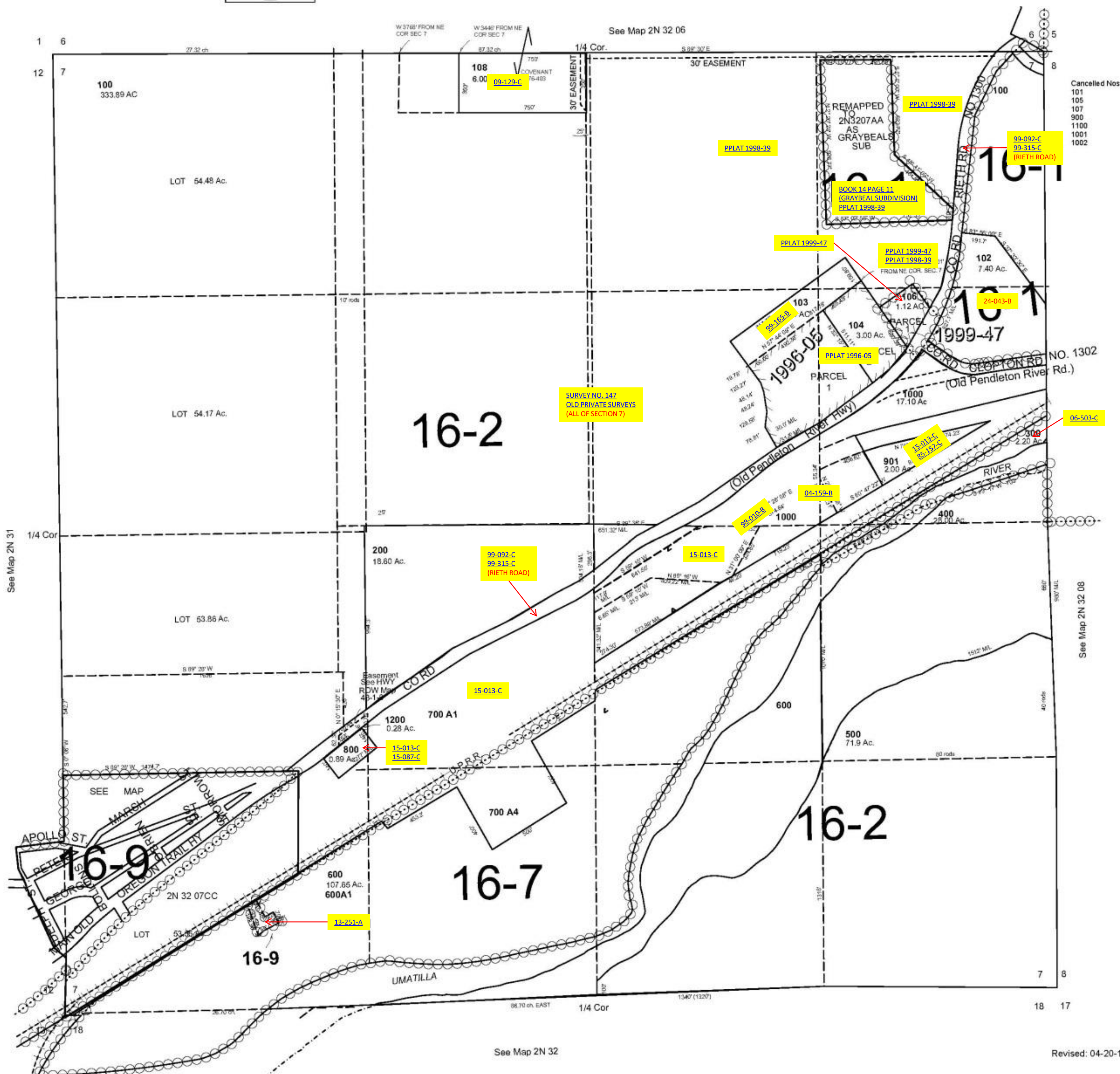
This map was prepared for Assessment & Taxation purposes only and was NOT prepared nor is it suitable for legal, engineering or surveying purposes.



SEC 7 T2N R32E WM UMATILLA COUNTY

SCALE: 1" = 400'

2N3207
AERIAL PHOTO NO 2P-191



Revised: 04-20-12

2N3207