

ALSO SEE SURVEY 89-125-C

This map was prepared for assessment purposes

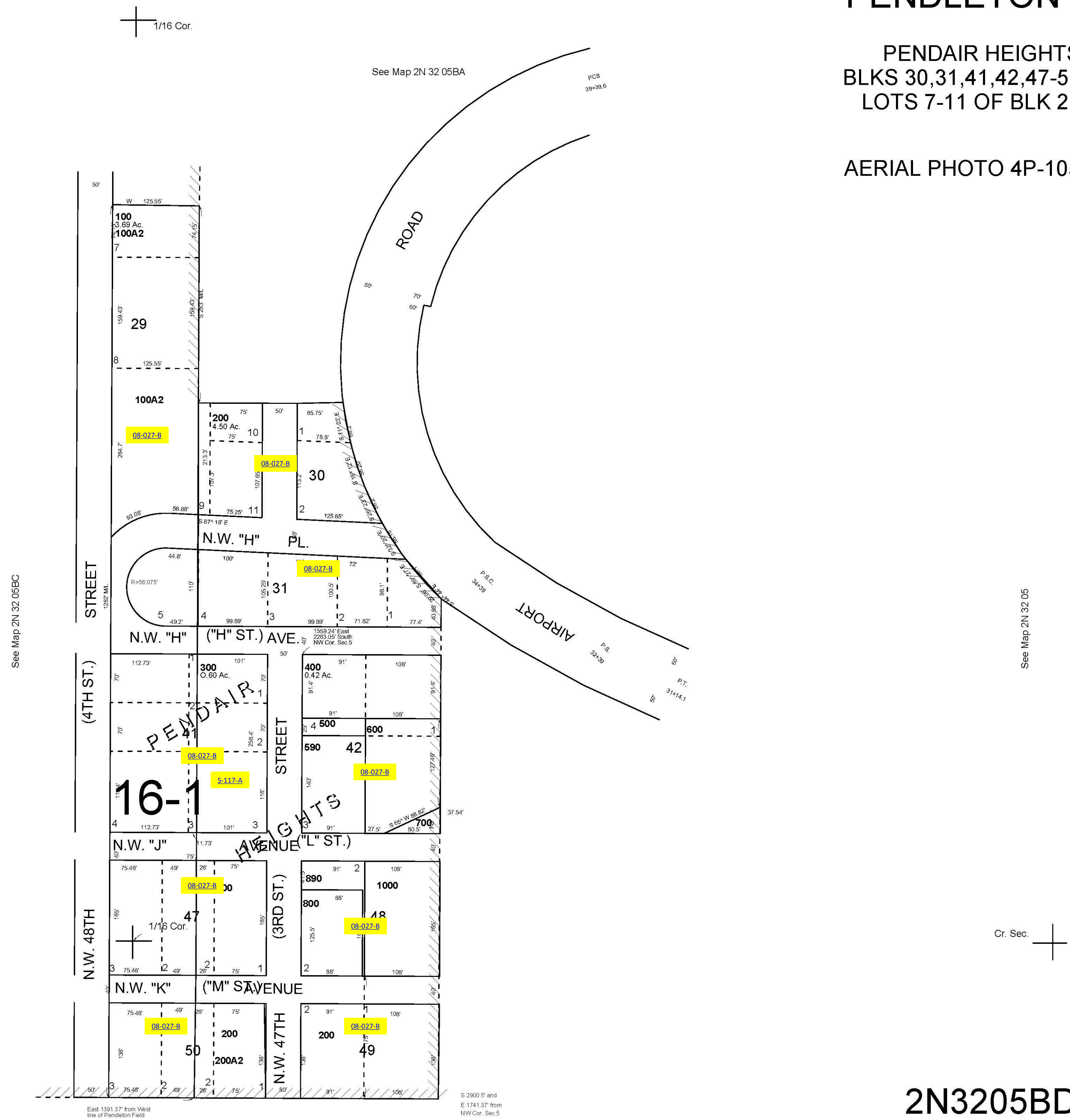
SE1/4 NW1/4 T2NR32E WM UMATILLA COUNTY

SCALE 1"=100"

2N3205BD PENDLETON

PENDAIR HEIGHTS
BLKS 30,31,41,42,47-50
LOTS 7-11 OF BLK 29

AERIAL PHOTO 4P-105



See Map 2N 32 05BC

See Map 2N 32 05

Cr. Sec. +

East 1391.37' from West line of Pendleton Field

S 2900.5' and E 1741.37' from NW Cor. Sec 5

2N3205BD