

ALSO SEE SURVEYS L-026-C, Q-0083-AX, 04-129-G

This map was prepared for Assessment & Taxation purposes only and was NOT prepared nor is it suitable for legal, engineering or surveying purposes.

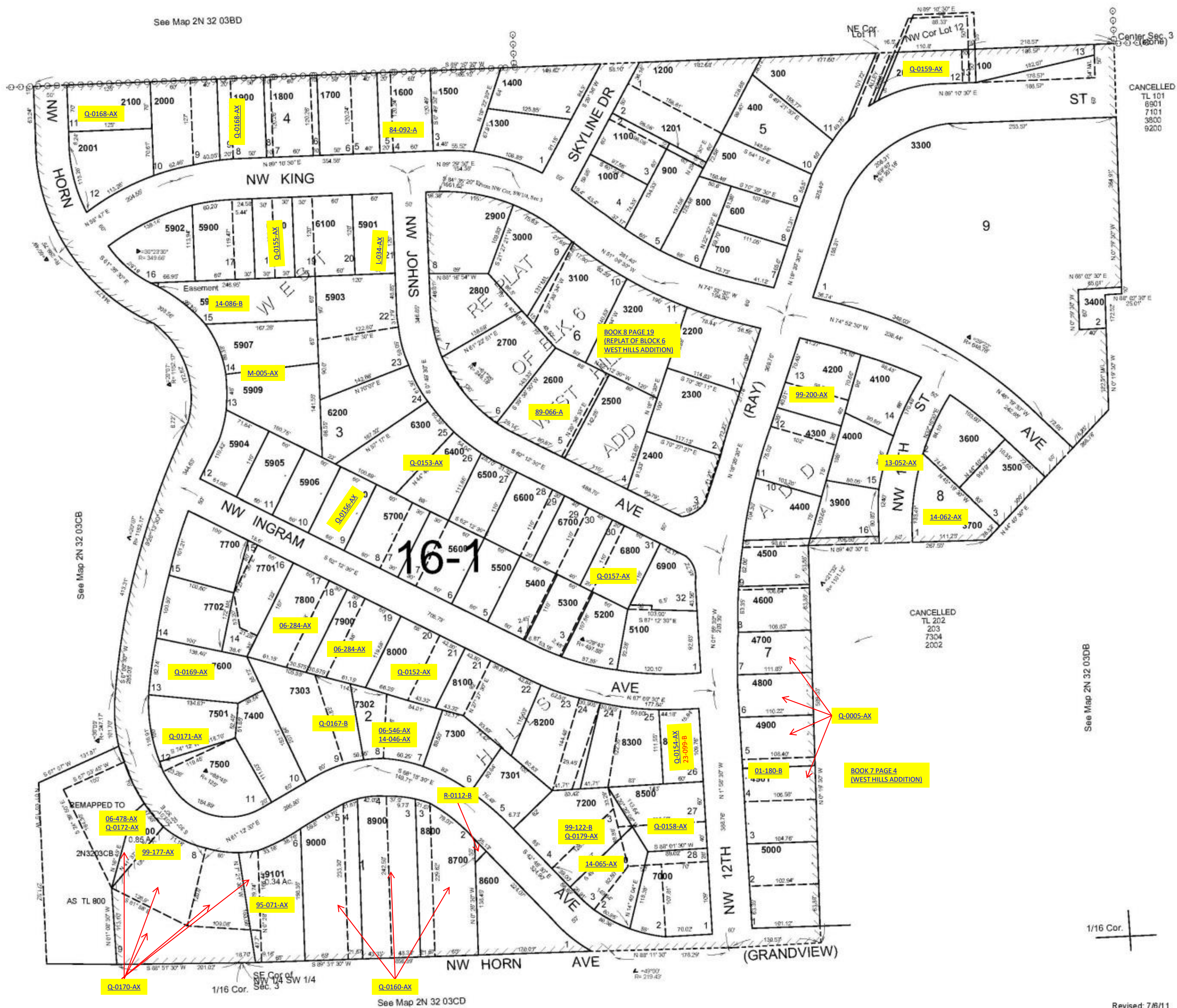


NE 1/4 SW 1/4 SEC 03 T2N R32E WM UMATILLA COUNTY

2N3203CA

SCALE: 1" = 100'

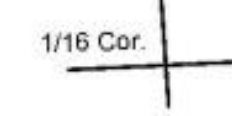
See Map 2N 32 03BD



CANCELLED
TL 101
6901
7101
3800
9200

CANCELLED
TL 202
7304
2002

See Map 2N 32 03DB



Revised: 7/6/11

2N3203CA