

This map was prepared for assessment purposes

NW1/4 SW1/4 T5NR28E WM UMATILLA COUNTY

9/19/05

2N 32 03BD

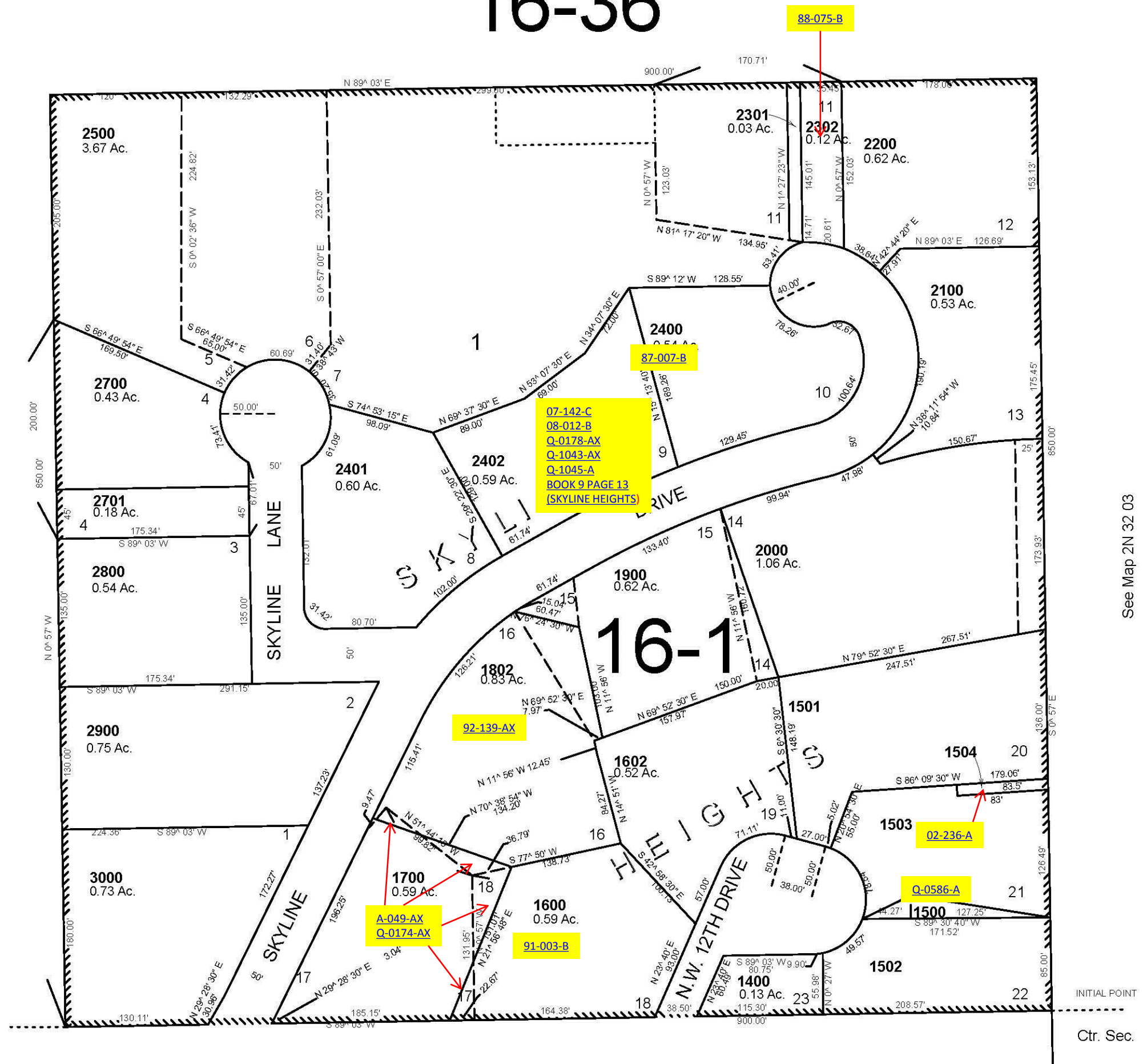
AERIAL PHOTO NO. NZ 4P-103

1"=100'

- CANCELLED
- TL 100
- 101
- 200
- 300
- 301
- 302
- 400
- 401
- 500
- 600
- 700
- 800
- 900
- 1000
- 1100
- 1200
- 1300
- 1601
- 1701
- 1702
- 1801
- 2001
- 1800
- 2300
- 2600
- 2601

See Map 2N 32 03

16-36



See Map 2N 32 03

See Map 2N 32 03

See Map 2N 32 03CA

2N 32 03BD