

ALSO SEE SURVEYS 05-093-C, 06-384-A, 13-050-B, 13-083-AX, Q-0081-AX, Q-1041-A, 04-129-G

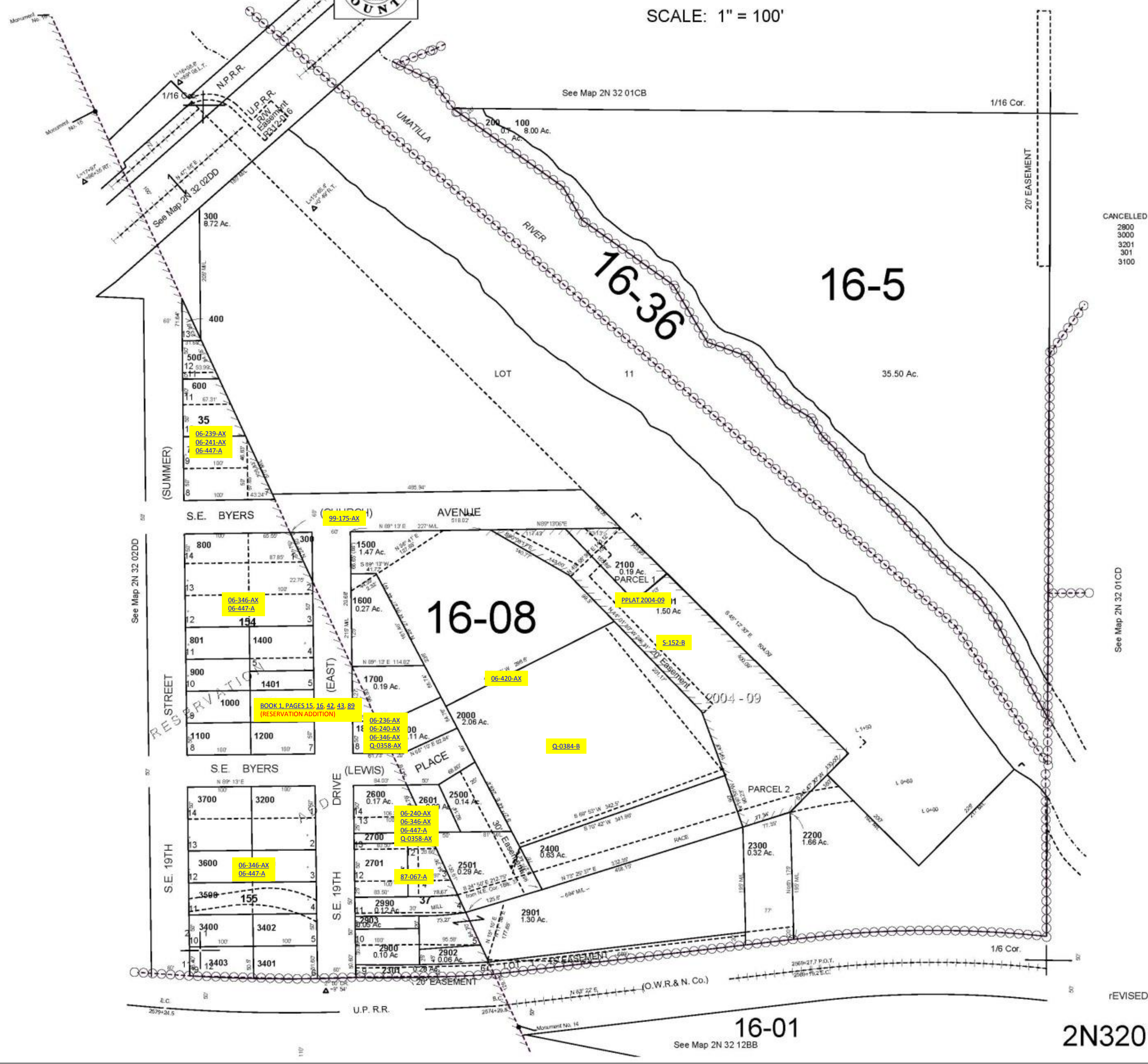
This map was prepared for Assessment & Taxation purposes only and was NOT prepared nor is it suitable for legal, engineering or surveying purposes.



# SW1/4 SW1/4 SEC 1 T2N R32E WM UMATILLA COUNTY

2N3201CC

SCALE: 1" = 100'



CANCELLED  
2900  
3000  
3201  
301  
3100

See Map 2N 32 01CD

REVISED: 12/6/10

16-01  
See Map 2N 32 12BB

2N3201CC