

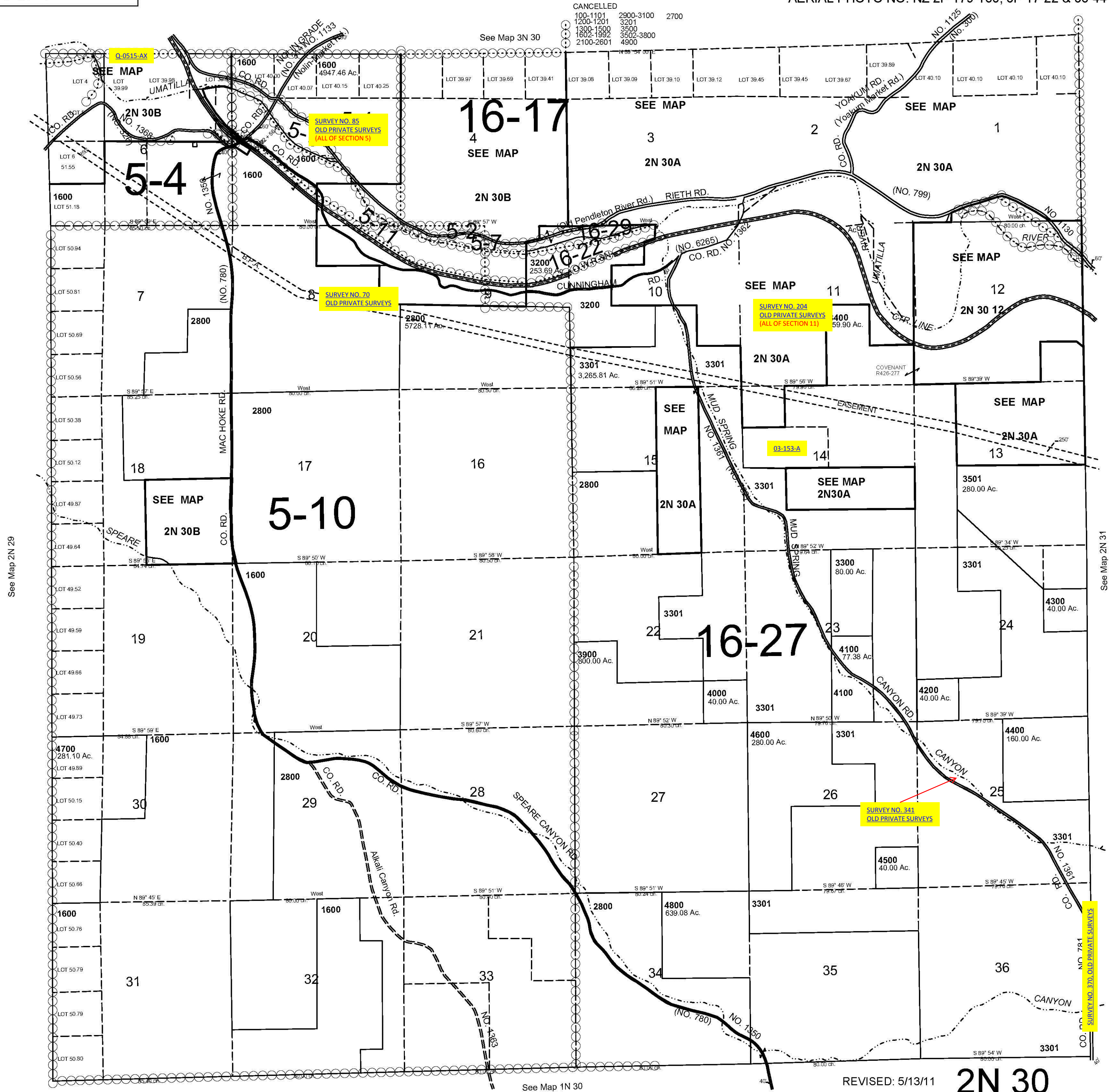
This map was prepared for Assessment & Taxation purposes only and was NOT prepared nor is it suitable for legal, engineering or surveying purposes.

T2N R30E WM UMATILLA COUNTY

2N 30

AERIAL PHOTO NO. NZ 2P 179-185, 3P 17-22 & 38-44

1"=2000'



REVISED: 5/13/11

2N 30