

ALSO SEE SURVEYS 95-016-C, 95-205-B, 97-140-C; CORNER RECORDS; G.L.O. SURVEYS; REDFIELD SURVEYS

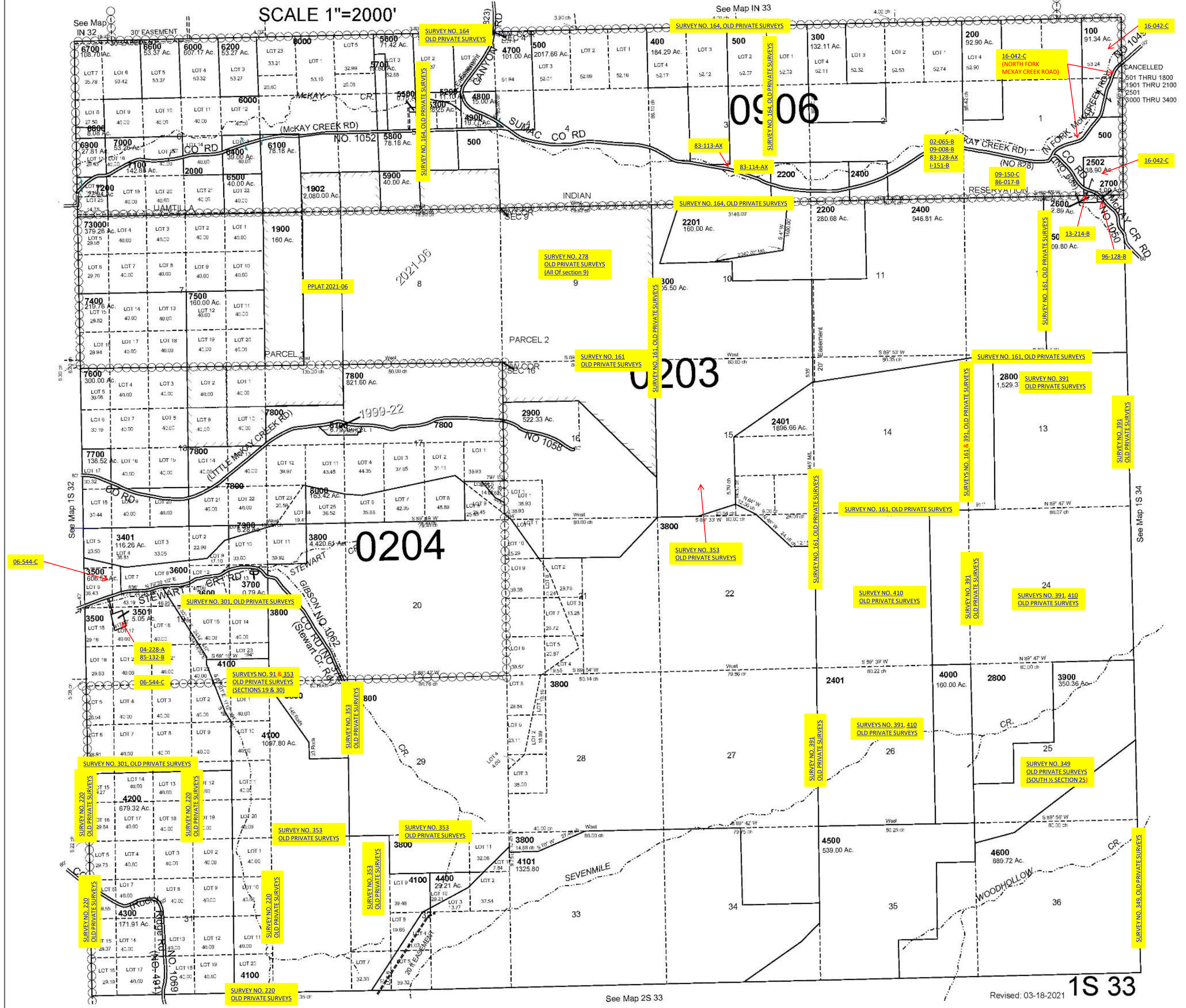
This map was prepared for Assessment & Taxation purposes only and was not prepared nor is it suitable for legal, engineering or surveying purposes.

T1S R33E WM UMATILLA COUNTY

1S 33

AERIAL PHOTO NO. NZ-7P 17-23, 74-79 & 98-106

SCALE 1"=2000'



See Map 2S 33

Revised: 03-18-2021

1S 33