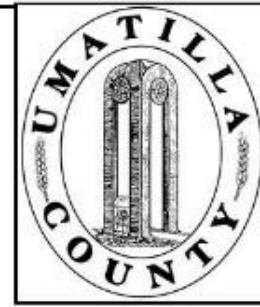


This map was prepared for Assessment & Taxation purposes only and was NOT prepared nor is it suitable for legal, engineering or surveying purposes.

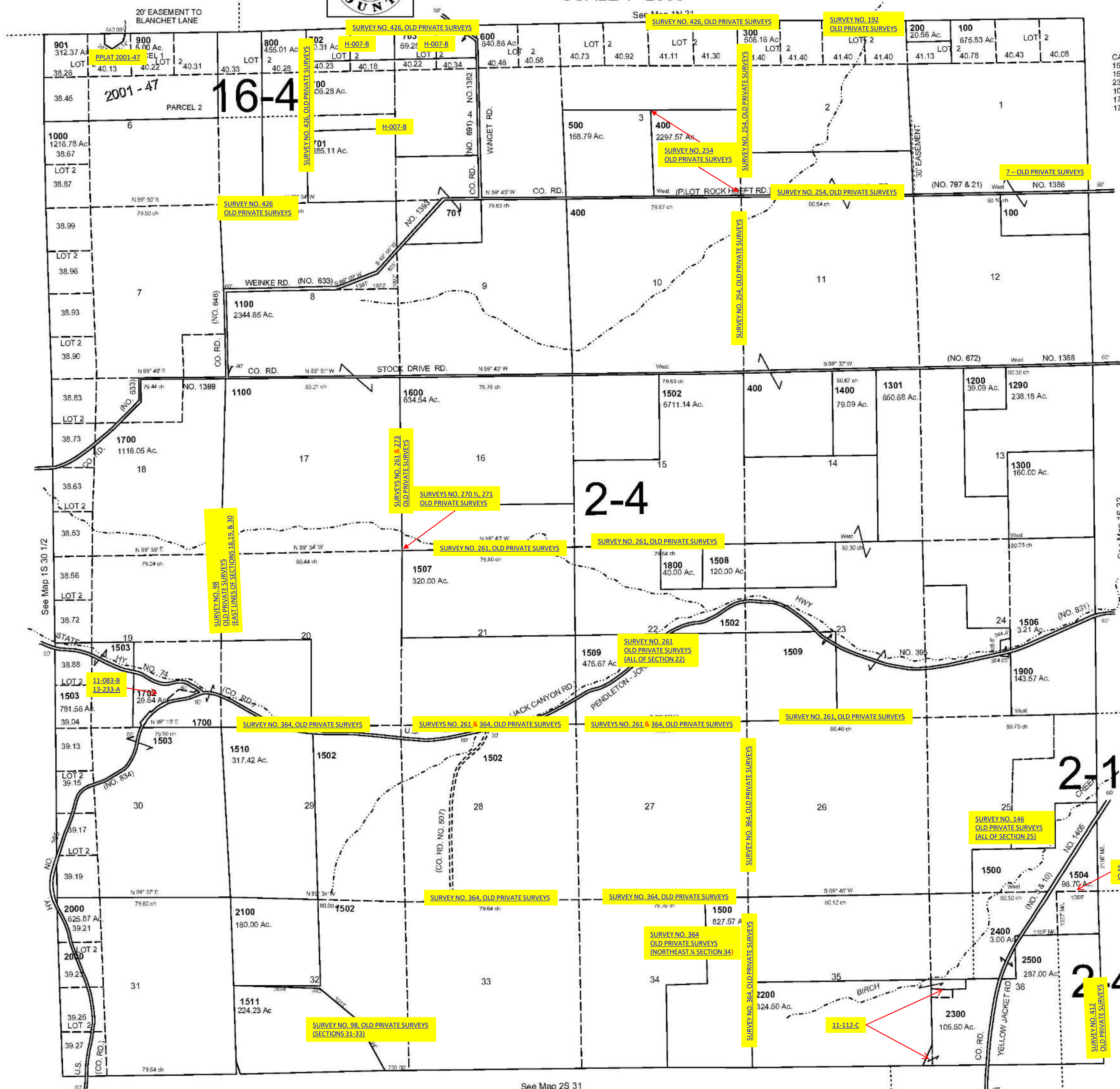


T1S R31E WM UMATILLA COUNTY

SCALE 1"=2000'

1S 31

AERIAL PHOTO NO NZ 7P 30-36, 61-67 & 112-118



CANCELLED
1501
1505
2301
1001
1703
1701

See Map 1S 32

See Map 1S 30 1/2

See Map 2S 31

Revised: 2/4/14

1S 31