

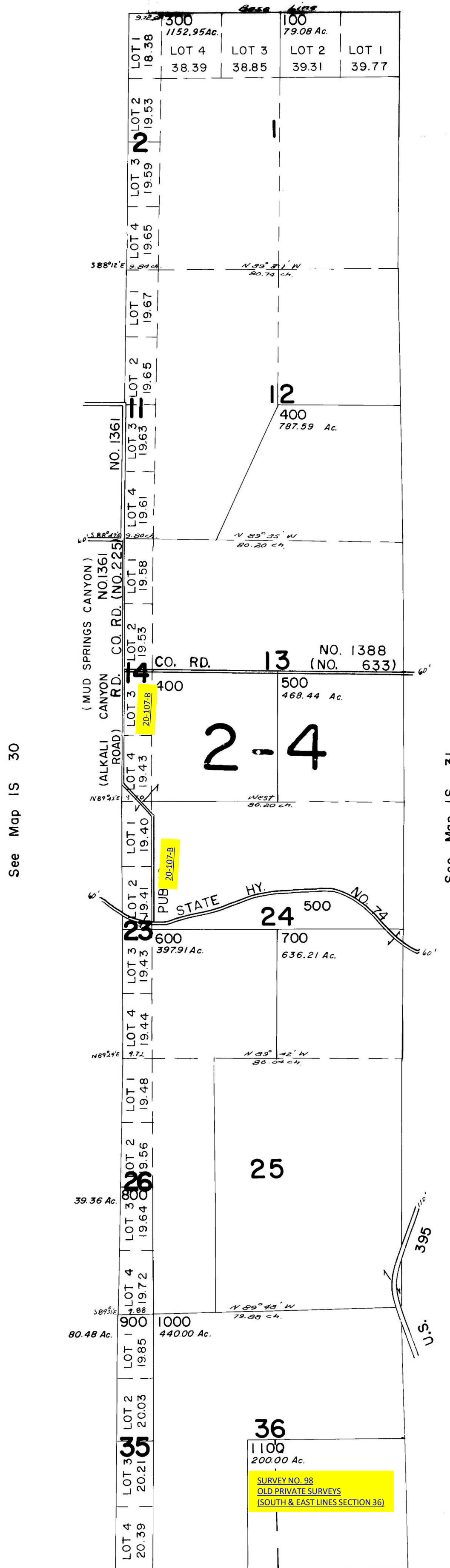
THIS MAP WAS PREPARED FOR ASSESSMENT PURPOSES ONLY

T.1S. R.30I/2E.W.M.  
UMATILLA COUNTY

IS 30I/2

Aerial Photo No. 7P-60  
7P-61, 7P-119

1" = 2000' See Map IN 30



CANCELLED  
T.L. 701

IS 30I/2