

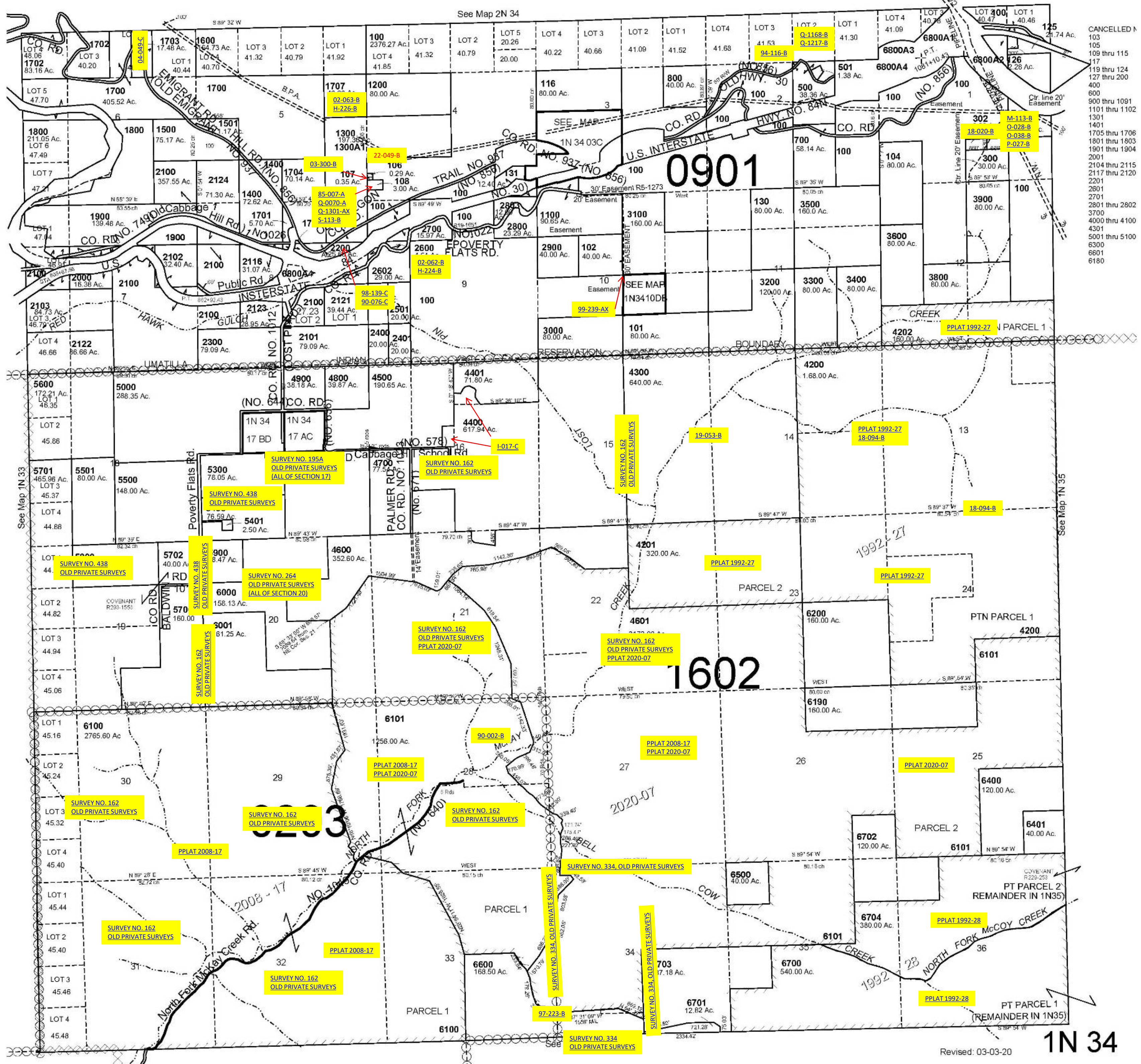
This map was prepared for Assessment & Taxation purposes only and was NOT prepared nor is it suitable for legal, engineering or surveying purposes.

# T1N R34E WM UMATILLA COUNTY

1N 34

SCALE 1"=2000'

AERIAL PHOTO NO. 4P 13-19  
3P 145-150  
3P-170-174



Revised: 03-03-20

1N 34