

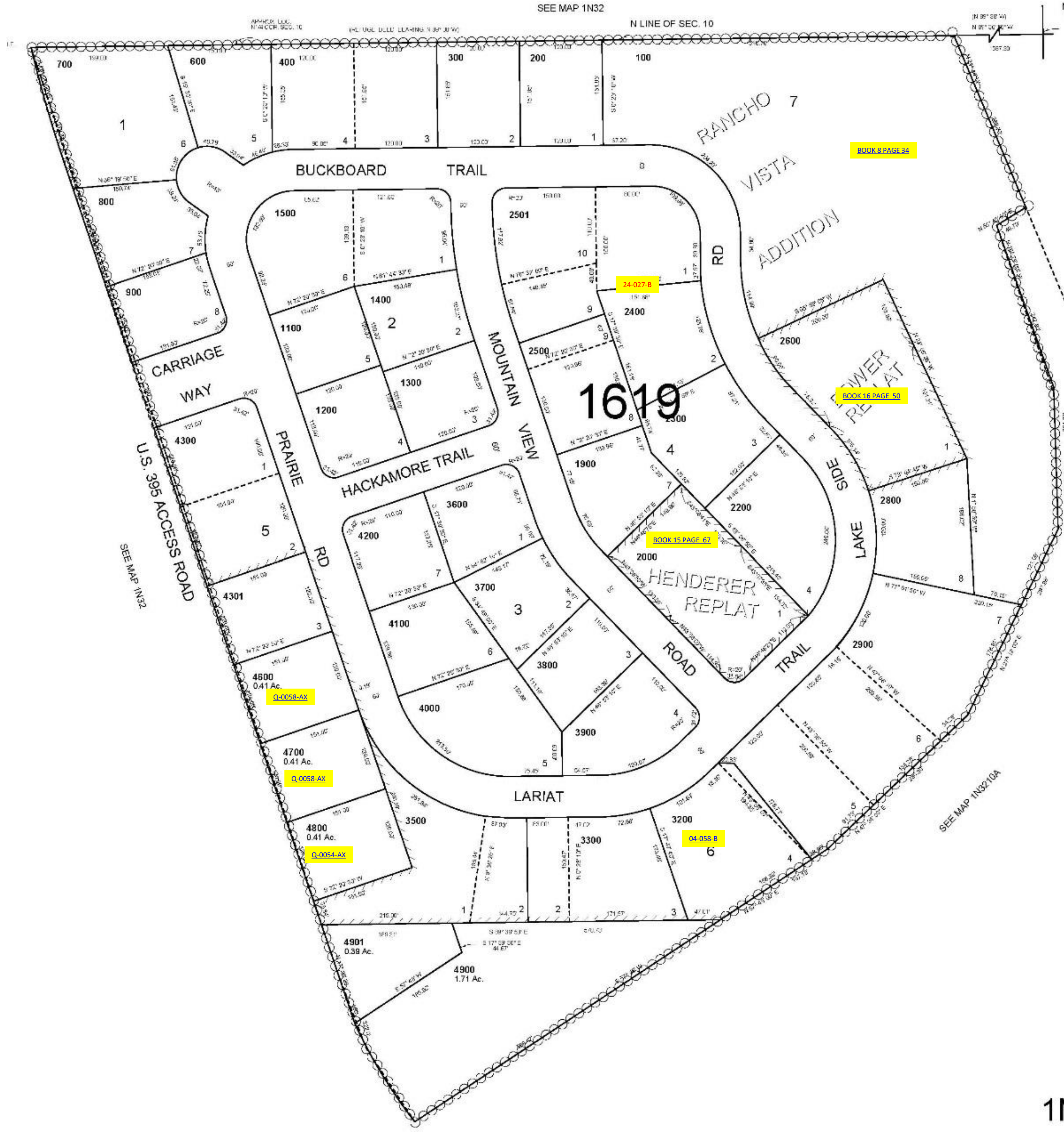
This map was prepared for Assessment & Taxation purposes only and was NOT prepared nor is it suitable for legal, engineering or surveying purposes.

NW1/4 NE1/4 SEC 10 T1N R32E WM  
UMATILLA COUNTY

1N 32 10AB  
AERIAL PHOTO NO 4P-6

SCALE: 1" = 100

SEE MAP 1N32



- CANCELLED NOS
- 500
  - 1000
  - 1600 thru 1800
  - 3000
  - 3100
  - 3400
  - 4400
  - 4500
  - 2100
  - 2700

BOOK 8 PAGE 34

24-027-B

BOOK 16 PAGE 50

BOOK 15 PAGE 67

Q-0058-AX

Q-0058-AX

Q-0054-AX

04-058-B

Revised: 10-25-17

1N 32 10AB