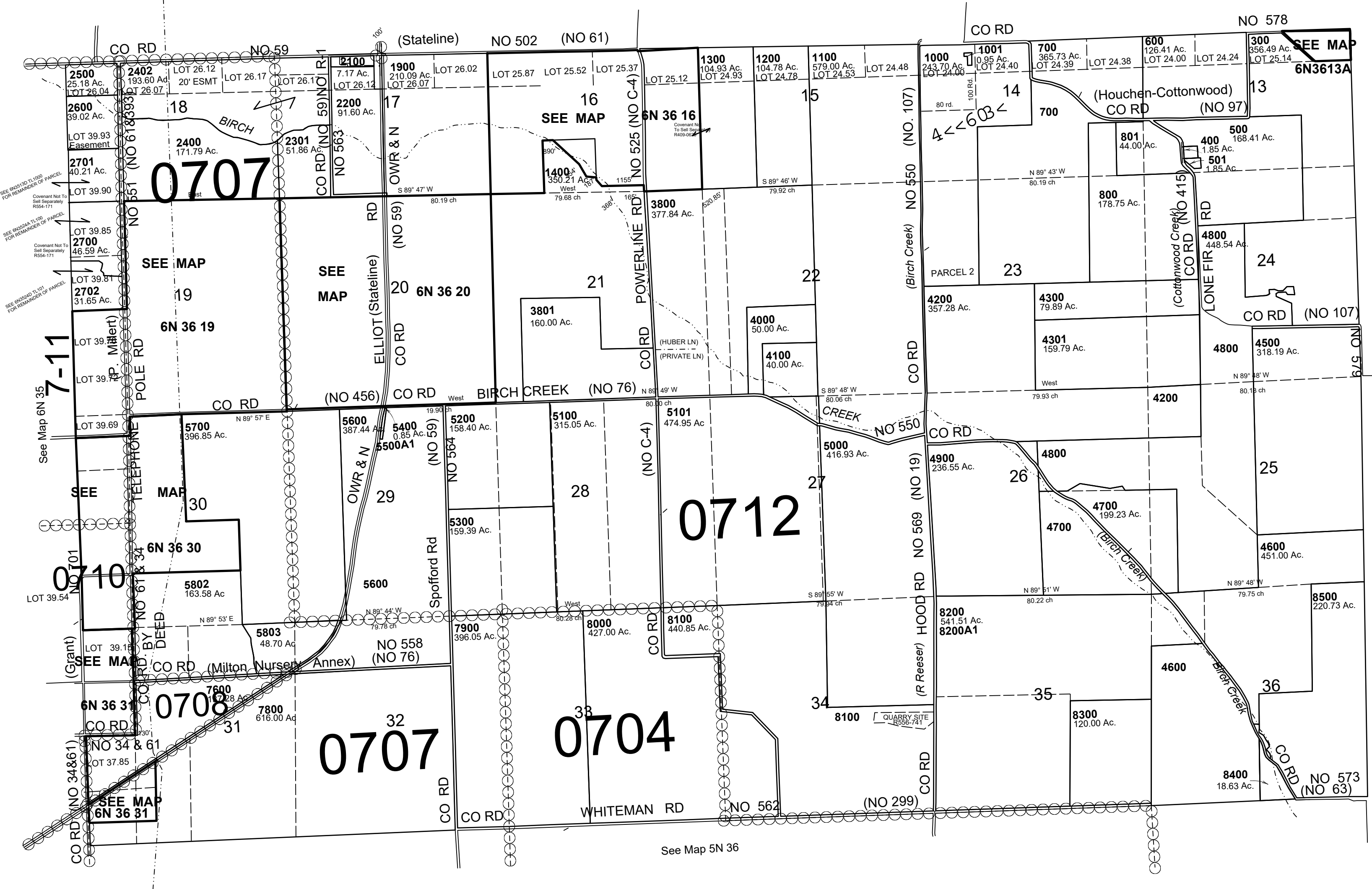


This map was prepared for Assessment & Taxation purposes only and was NOT prepared nor is it suitable for legal, engineering or surveying purposes.

T6N R36E WM
UMATILLA COUNTY
SCALE 1"=2000'

6N 36
AERIAL PHOTO NO. NZ 6P 12-16 & 65-68



- CANCELLED
- 900
- 2302
- 2401
- 4400
- 4401
- 5601
- 5800
- 5801
- 5900
- 6000-6800
- 6900-7500
- 2800-3300
- 2000
- 3400-3700
- 1401
- 1500-1800
- 100-201
- 7601
- 7700
- 7701
- 8500
- 3900

Revised: 09-09-2021

6N 36