

This map was prepared for Assessment & Taxation purposes only and was NOT prepared nor is it suitable for legal, engineering or surveying purposes.

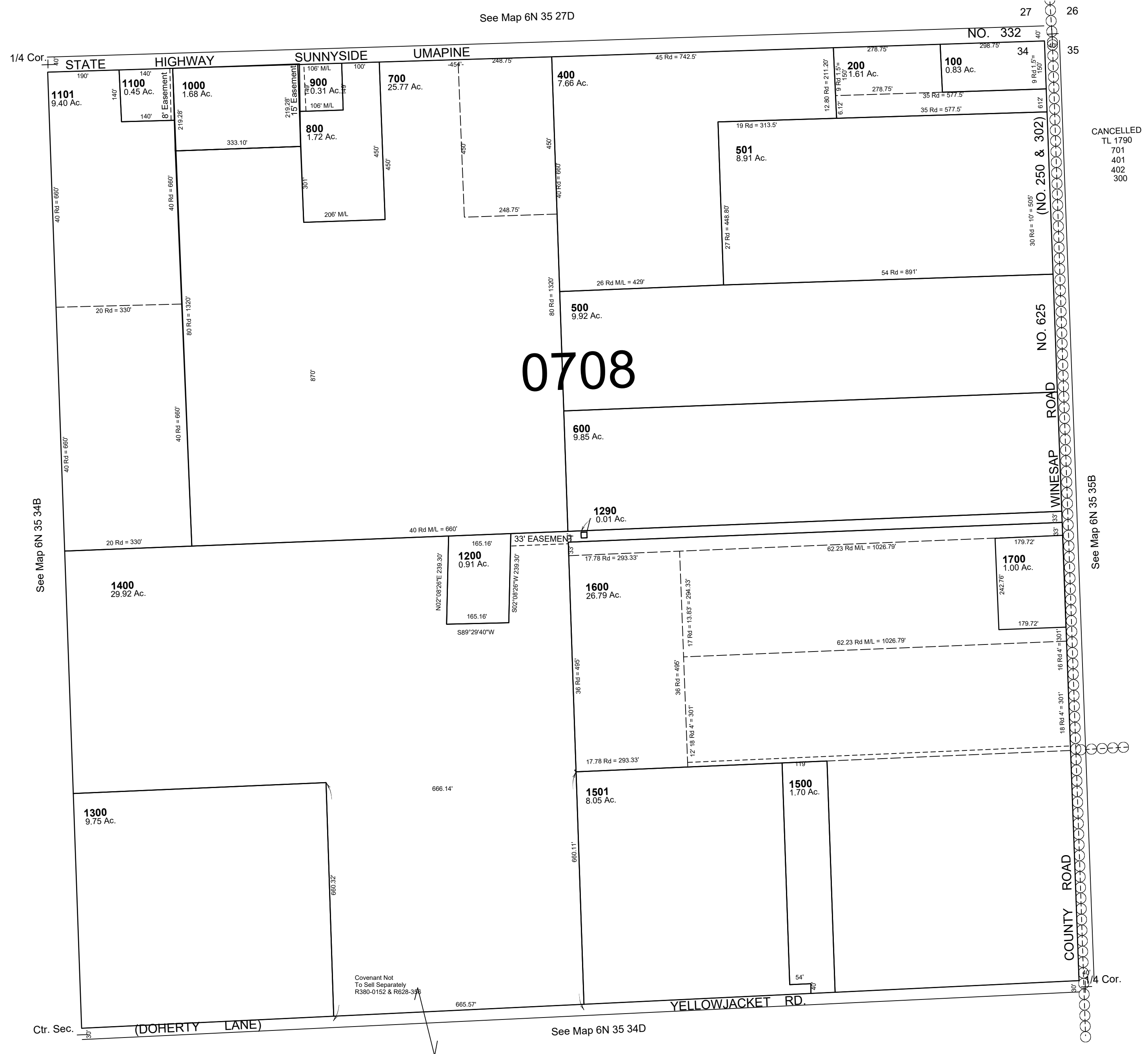
# NE1/4 SEC 34 T6N R35E WM UMATILLA COUNTY

## 6N 35 34A

AERIAL PHOTO NO. NZ 6P-62

SCALE 1"=200'

See Map 6N 35 27D



## 6N 35 34A