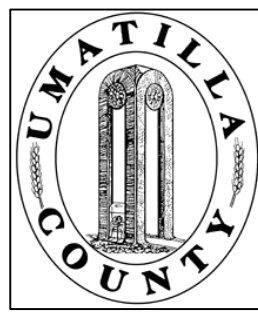


This map was prepared for Assessment & Taxation purposes only and was NOT prepared nor is it suitable for legal, engineering or surveying purposes.



NE 1/4 SEC 22 T 6N R 35E WM

UMATILLA COUNTY

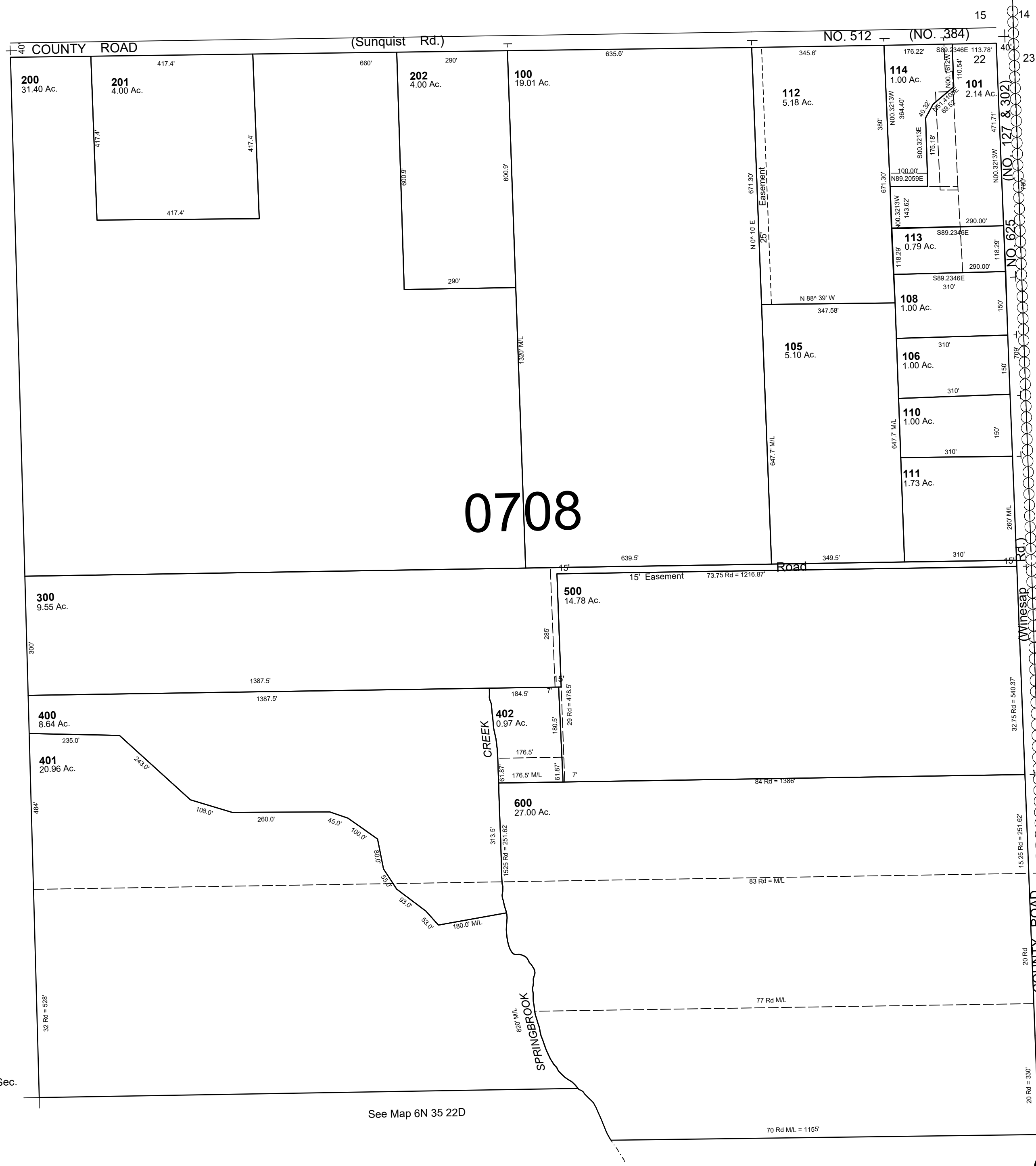
SCALE: 1" = 200'

6N3522A

AERIAL PHOTO NO. NZ-6P-19

See Map 6N 35 15D

1/4 Cor.



0708

CANCELLED  
TL 103  
104  
109  
700  
501  
102  
107

See Map 6N 35 22B

See Map 6N 35 23B

Ctr. Sec.

See Map 6N 35 22D

Revised: 09-08-2021

6N3522A