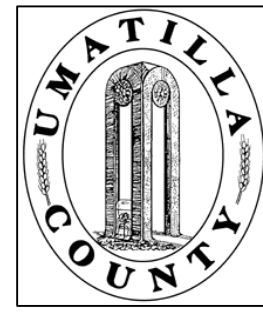


This map was prepared for Assessment & Taxation purposes only and was NOT prepared nor is it suitable for legal, engineering or surveying purposes.

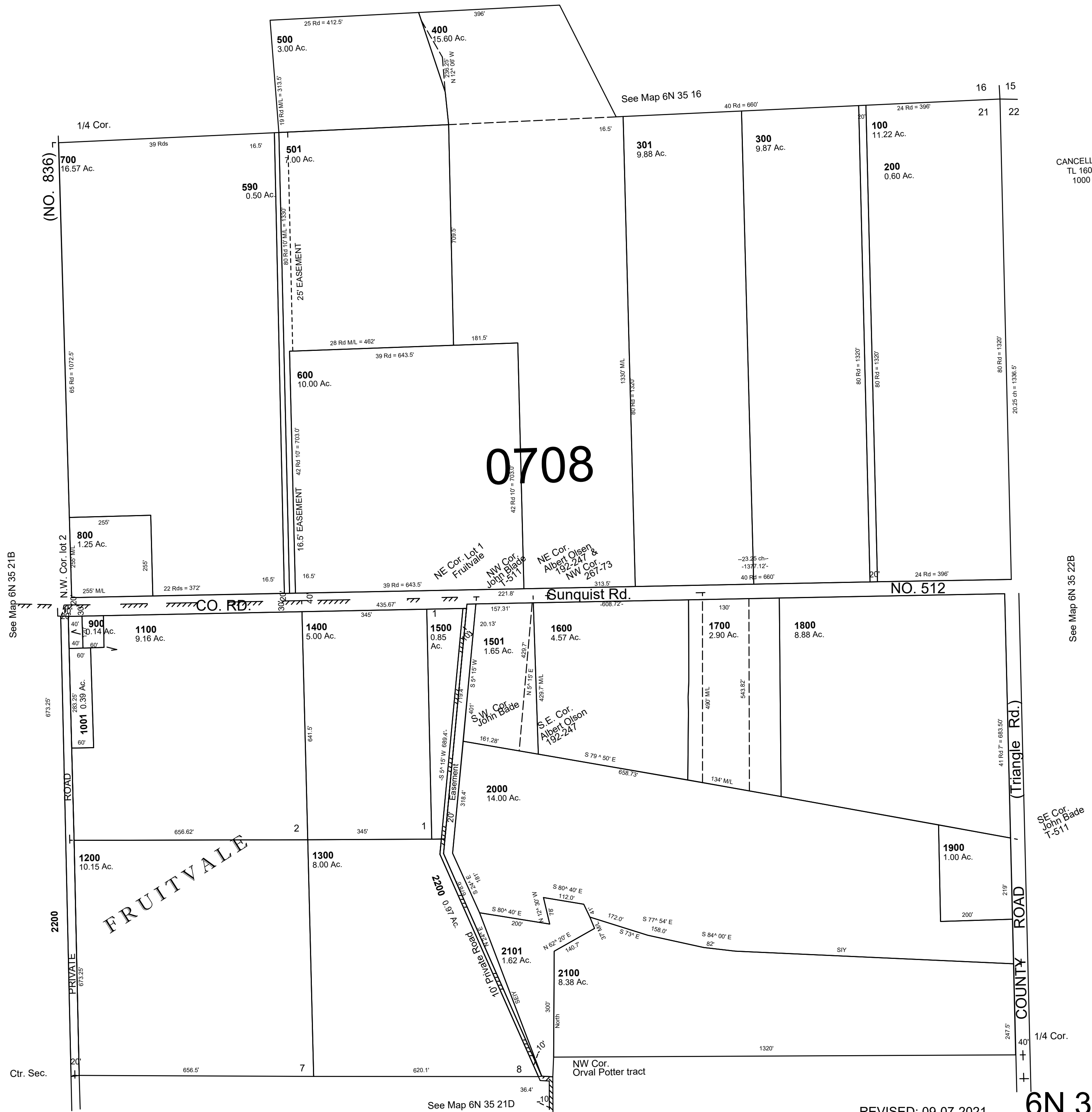


# NE1/4 SEC 21 T 6N R 35E WM UMATILLA COUNTY, OR

SCALE: 1" = 200'

## 6N 35 21A

AERIAL PHOTO NO. NZ-6P-20



## 6N 35 21A