

This map was prepared for Assessment & Taxation purposes only and was NOT prepared nor is it suitable for legal, engineering or surveying purposes.

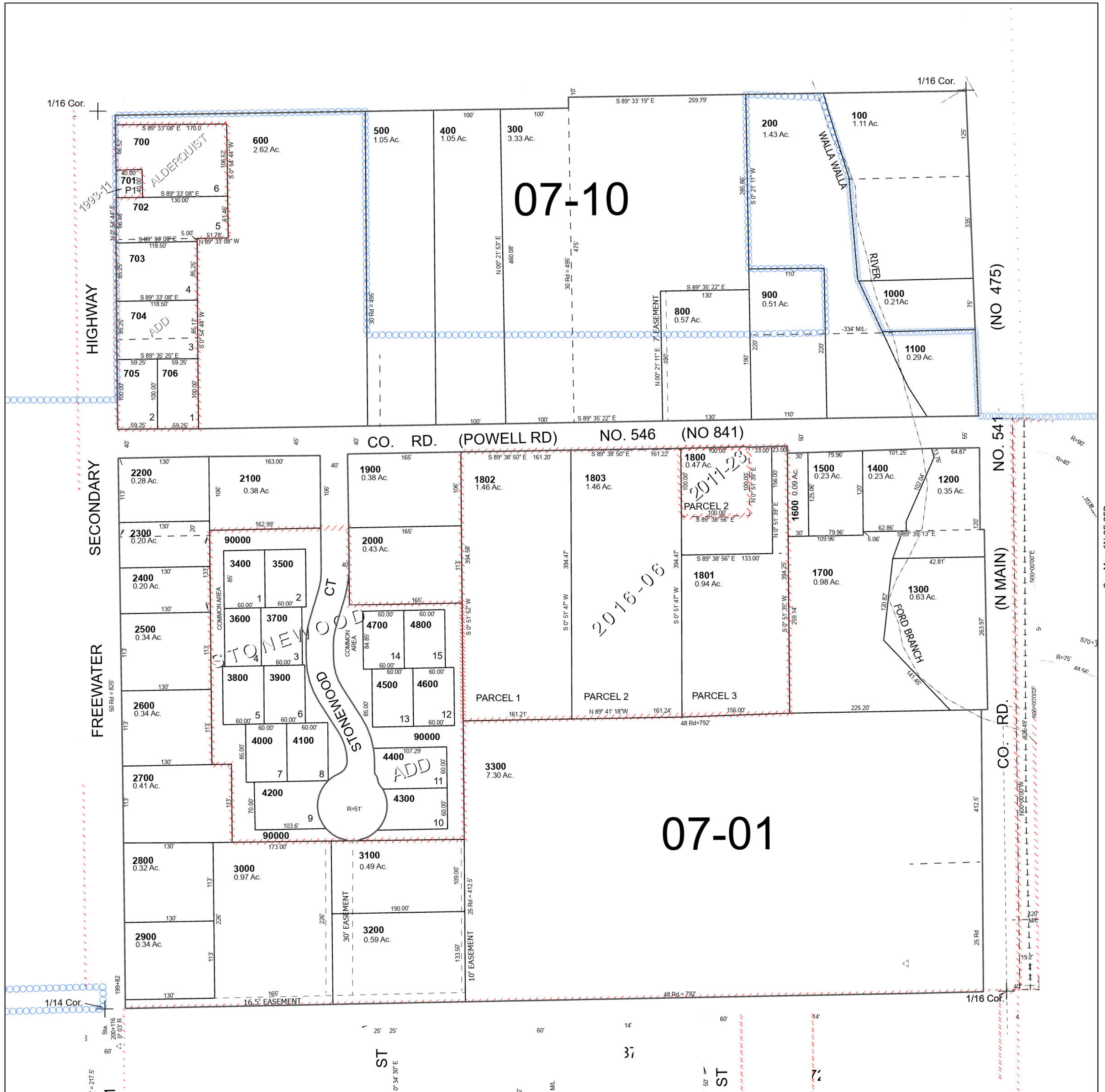
Cancelled Tax Lots

# SW 1/4 SE 1/4 SEC 35 T6N R35E WM UMATILLA COUNTY SCALE 1" = 100'

Milton-Freewater

## 6N 35 35DC

See Map 6N 35 35D



See Map 6N 35 35C

See Map 6N 35 35D

Revised 8/31/2023

See Map 5N 35 02AB

## 6N 35 35DC