

This map was prepared for Assessment & Taxation purposes only and was NOT prepared nor is it suitable for legal, engineering or surveying purposes.

NW 1/4 SEC 26 T6N R35E WM UMATILLA COUNTY

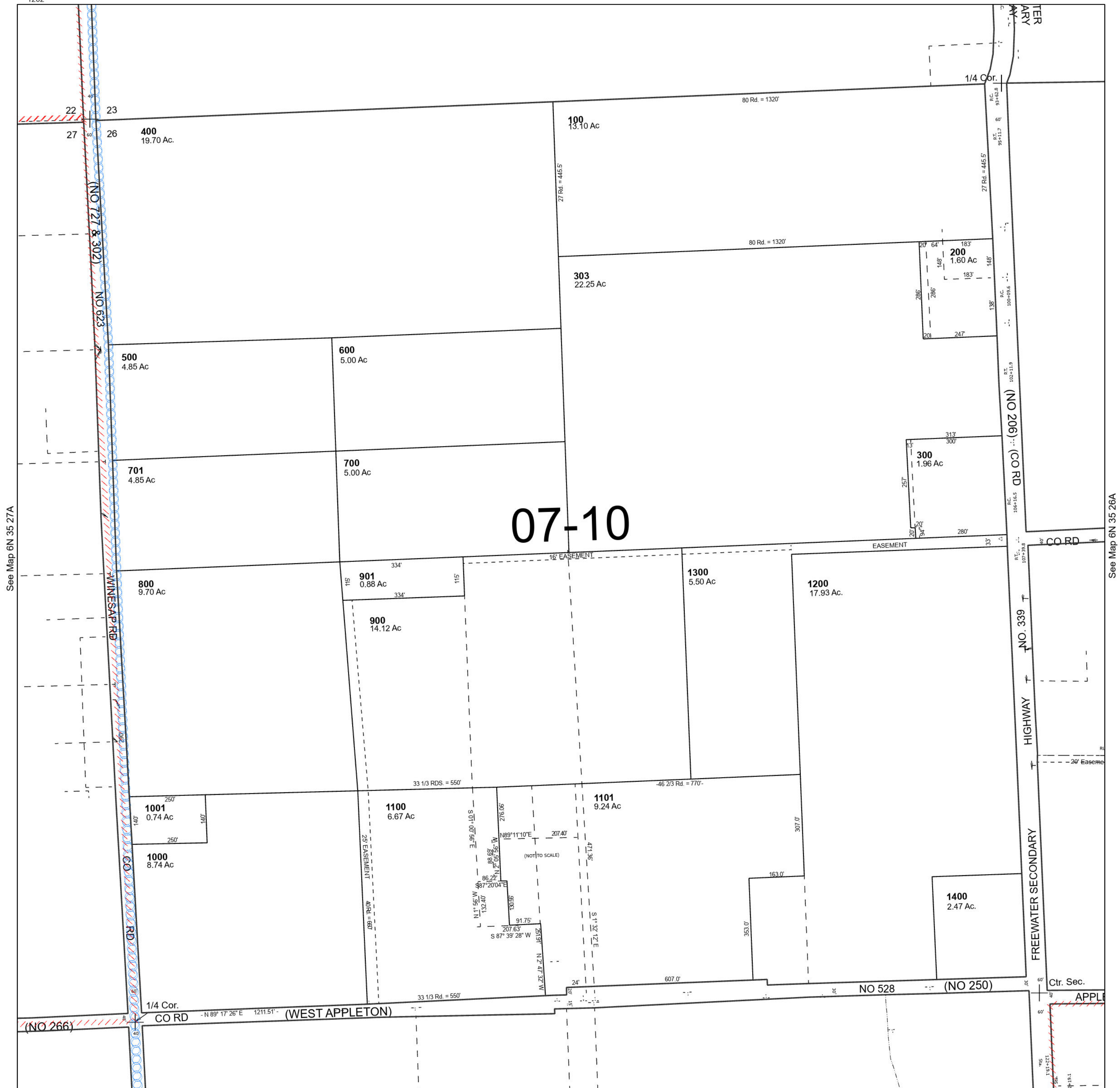
6N 35 26B

SCALE 1" = 200'

See Map 6N 35 23C

Cancelled Tax Lots

- 302
- 304
- 305
- 401
- 1102
- 1201
- 1202
- 301
- 1203
- 1202



See Map 6N 35 27A

See Map 6N 35 26A

Revised 5/24/2023

See Map 6N 35 26C

6N 35 26B