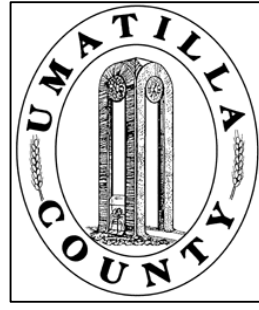


This map was prepared for Assessment & Taxation purposes only and was NOT prepared nor is it suitable for legal, engineering or surveying purposes.



SW1/4 SEC 31 T 5N R 29E WM UMATILLA COUNTY, OR

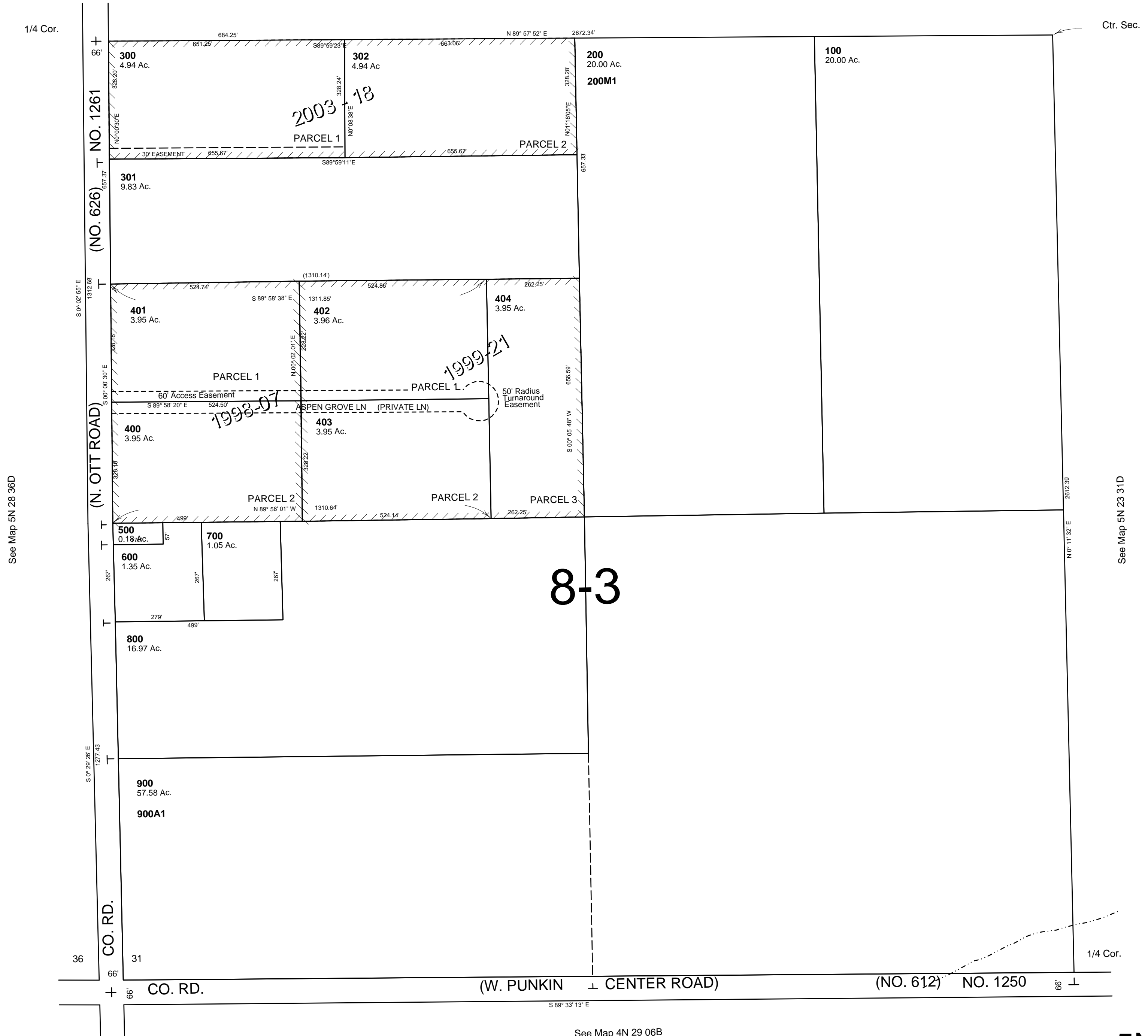
Revised: 01/26/09

5N2931C

SCALE: 1" = 200'

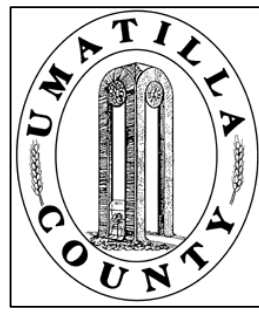
AERIAL PHOTO NO. 1P-101

See Map 5N 29 31B



5N2931C

This map was prepared for Assessment & Taxation purposes only and was NOT prepared nor is it suitable for legal, engineering or surveying purposes.



SW1/4 SEC 31 T 5N R 29E WM
UMATILLA COUNTY, OR

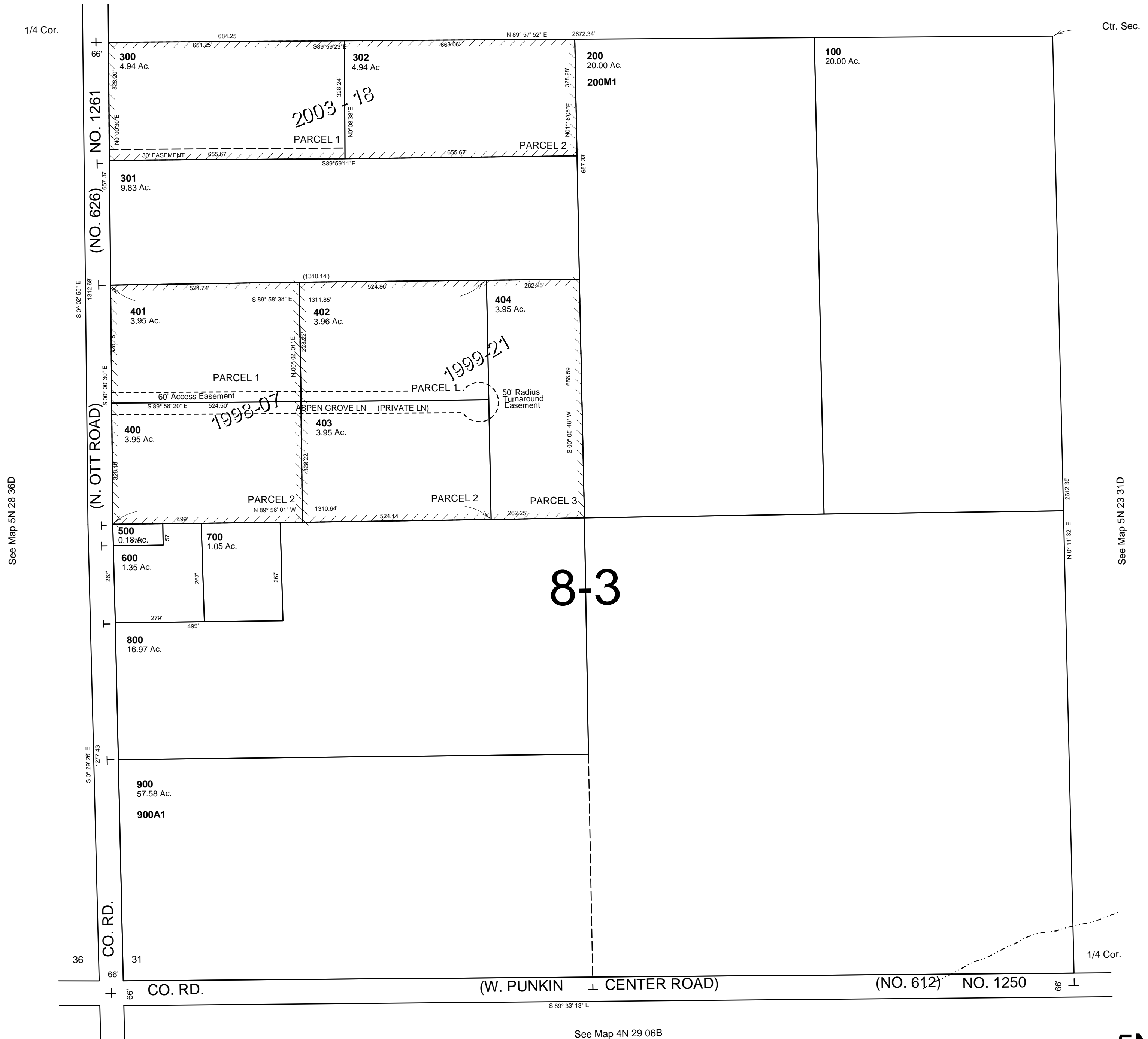
SCALE: 1" = 200'

Revised: 01/26/09

5N2931C

AERIAL PHOTO NO. 1P-101

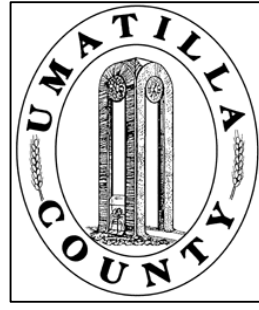
See Map 5N 29 31B



8-3

5N2931C

This map was prepared for Assessment & Taxation purposes only and was NOT prepared nor is it suitable for legal, engineering or surveying purposes.



SW1/4 SEC 31 T 5N R 29E WM UMATILLA COUNTY, OR

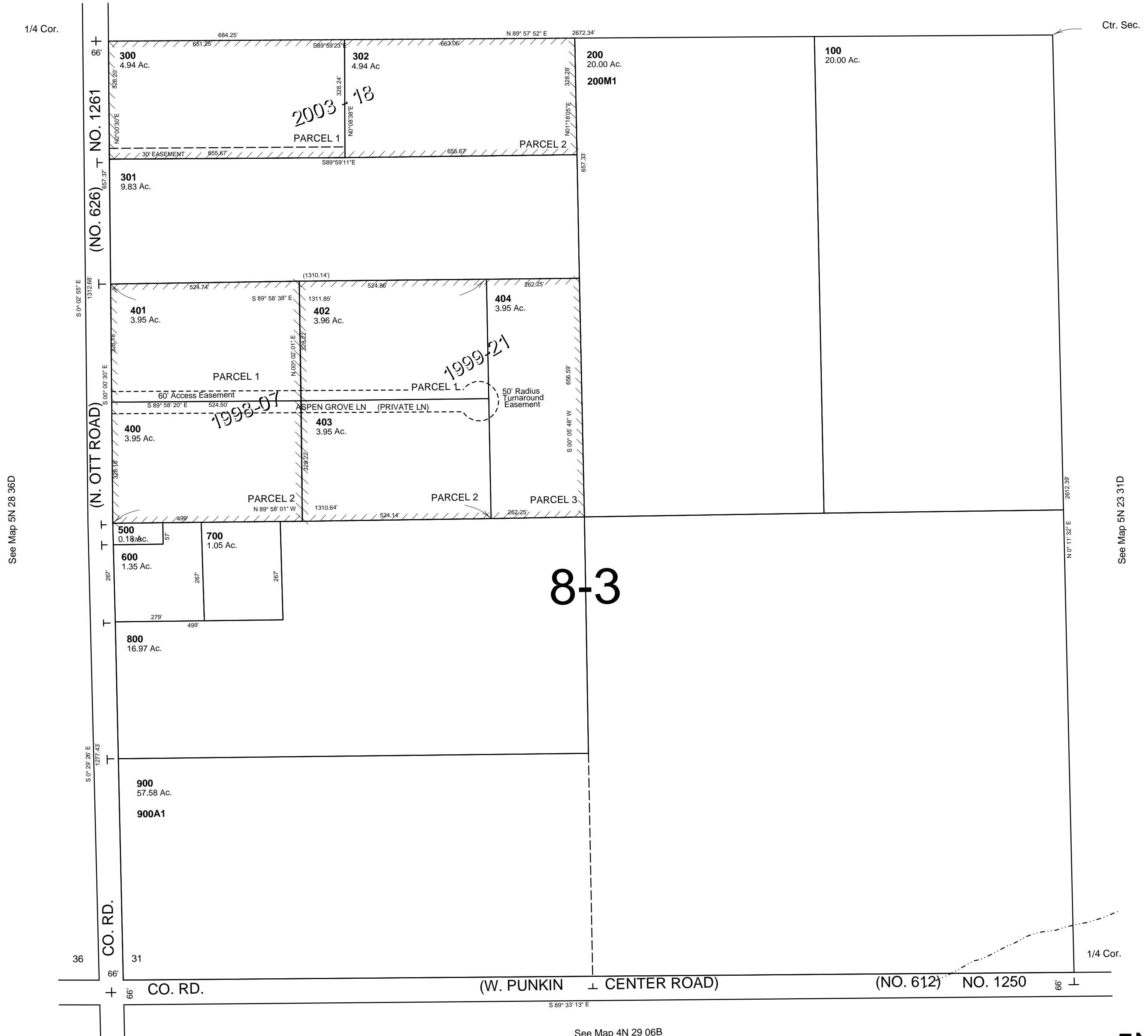
Revised: 01/26/09

5N2931C

SCALE: 1" = 200'

AERIAL PHOTO NO. 1P-101

See Map 5N 29 31B



See Map 5N 28 36D

See Map 5N 23 31D

See Map 4N 29 06B

5N2931C