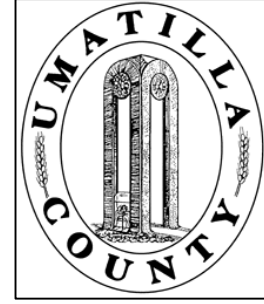


This map was prepared for Assessment & Taxation purposes only and was NOT prepared nor is it suitable for legal, engineering or surveying purposes.



# NE1/4 SEC 36 T5N R28E WM UMATILLA COUNTY

## 5N2836A

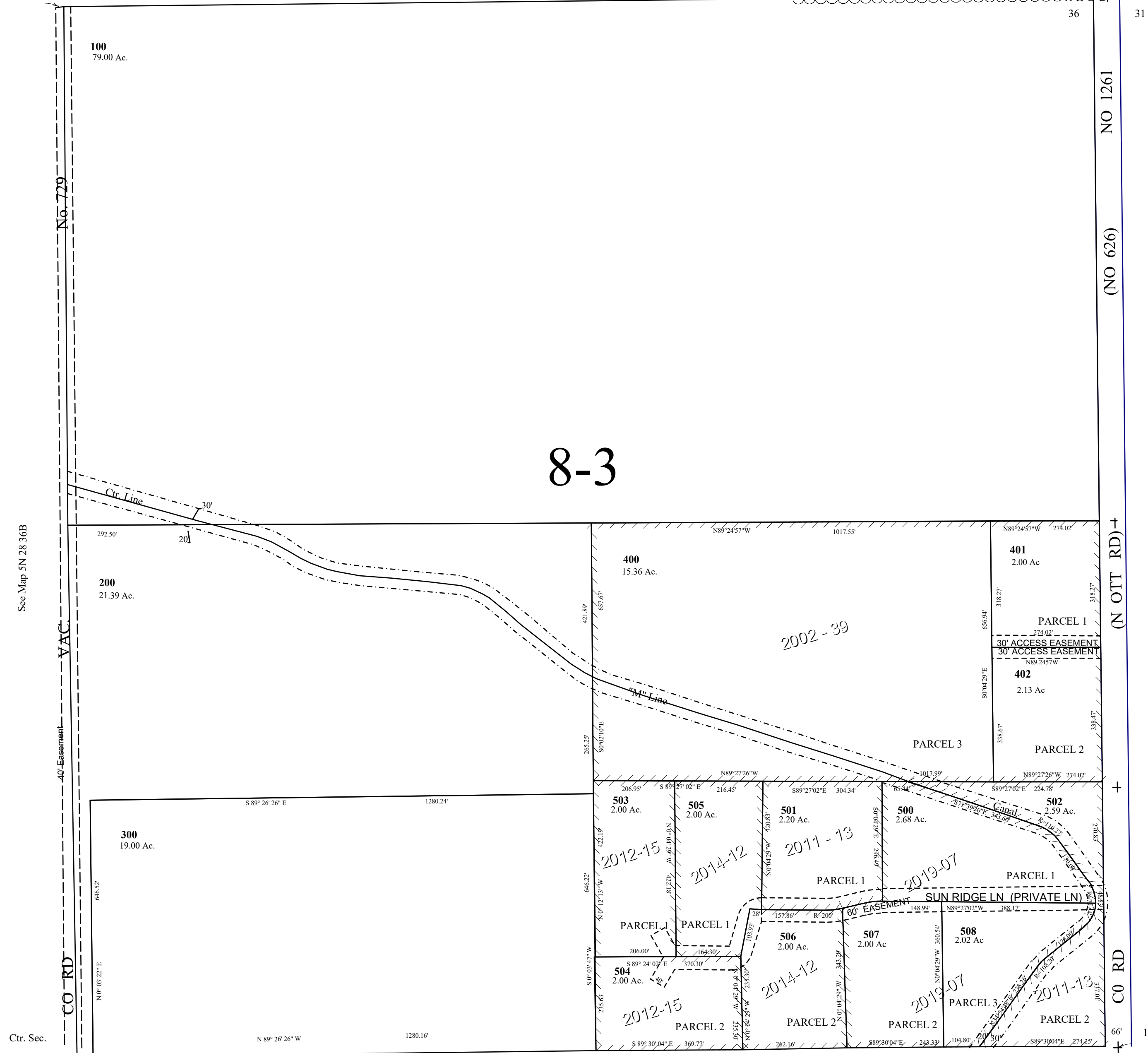
SCALE: 1" = 200

See Map 5N 28D

1/4 Cor.

25

30



See Map 5N 28 36B

See Map 5N 29 31B

See Map 5N 28 36D

Revised: 3/13/2019

## 5N2836A