

This map was prepared for Assessment & Taxation purposes only and was NOT prepared nor is it suitable for legal, engineering or surveying purposes.

NE 1/4 SEC 35 T5N R28E WM

UMATILLA COUNTY

SCALE 1"=200'

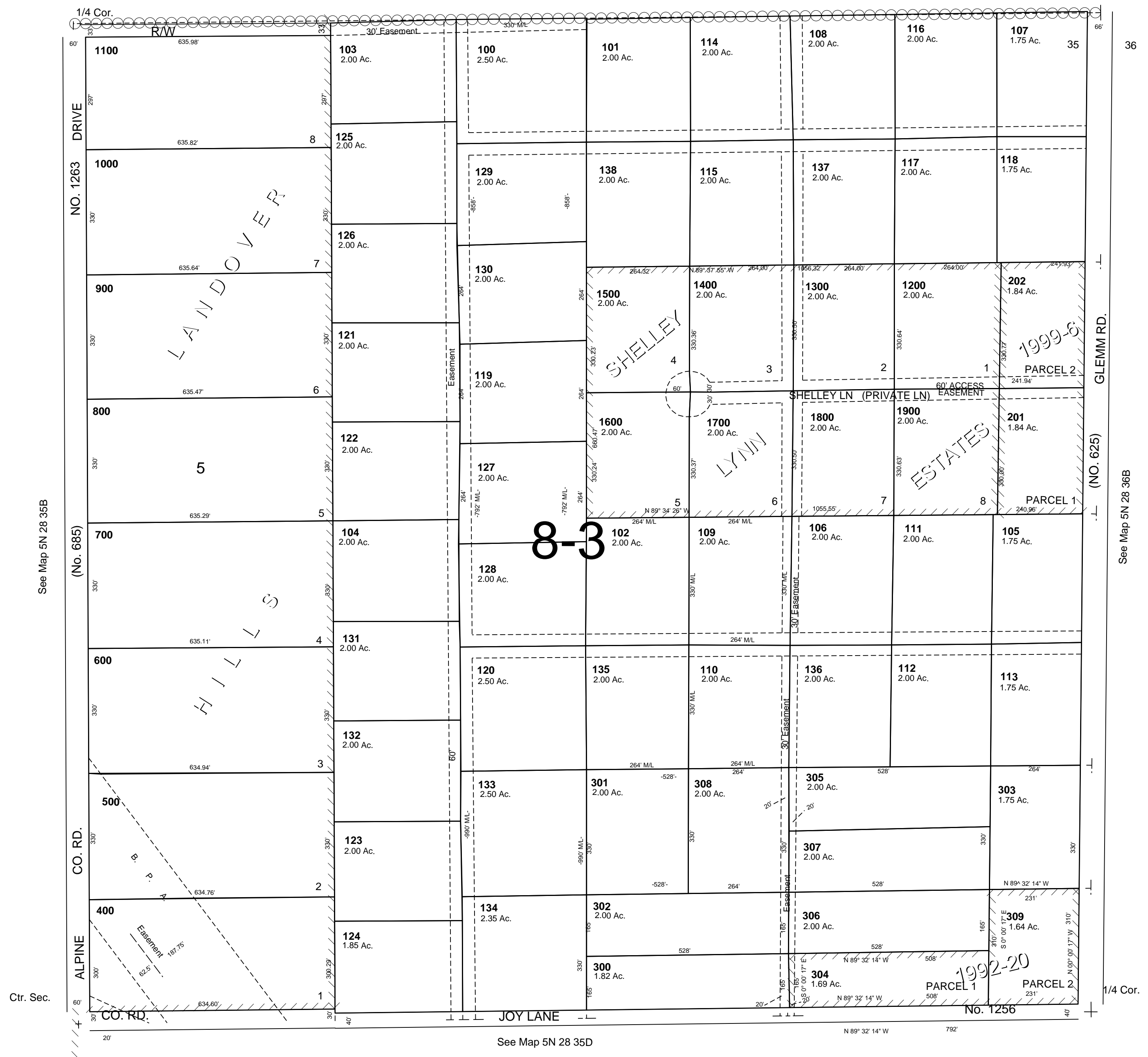
Revised: 01/26/09

5N 28 35A

AERIAL PHOTO NO. 1P-103

See Map 5N 28 26D

26 25



5N 28 35A