

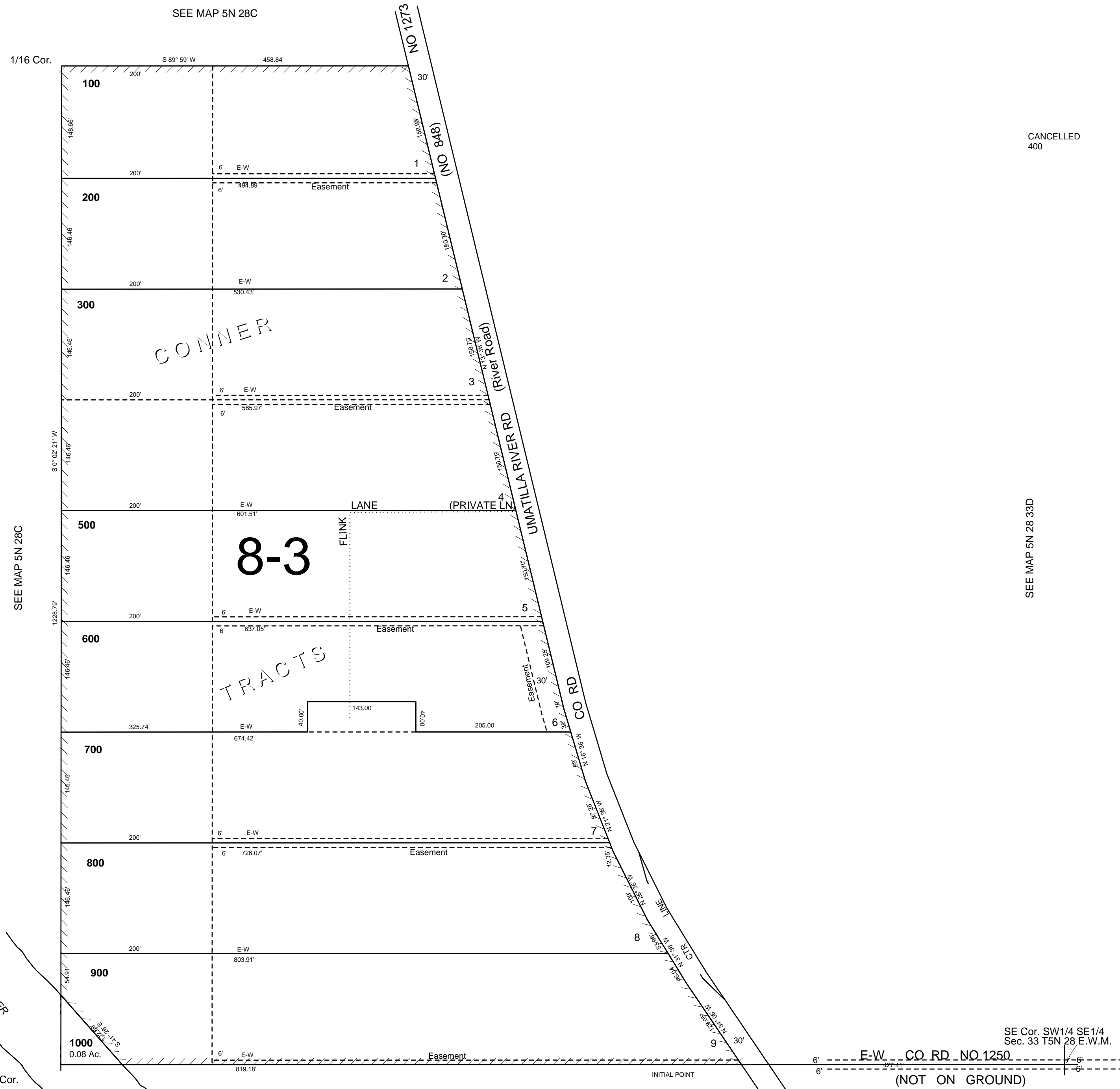
This map was prepared for Assessment & Taxation purposes only and was NOT prepared nor is it suitable for legal, engineering or surveying purposes.

# SW1/4 SE1/4 SEC 33 T5NR28E WM UMATILLA COUNTY

1"=100'

## 5N2833DC

AERIAL PHOTO NO: NZ-1P-105



CANCELLED  
400

SEE MAP 5N 28 33D

Revised: 8/06/09

## 5N2833DC