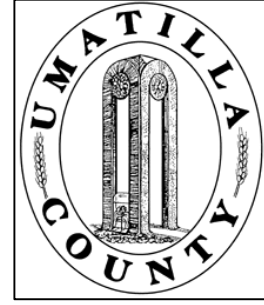


This map was prepared for Assessment & Taxation purposes only and was NOT prepared nor is it suitable for legal, engineering or surveying purposes.

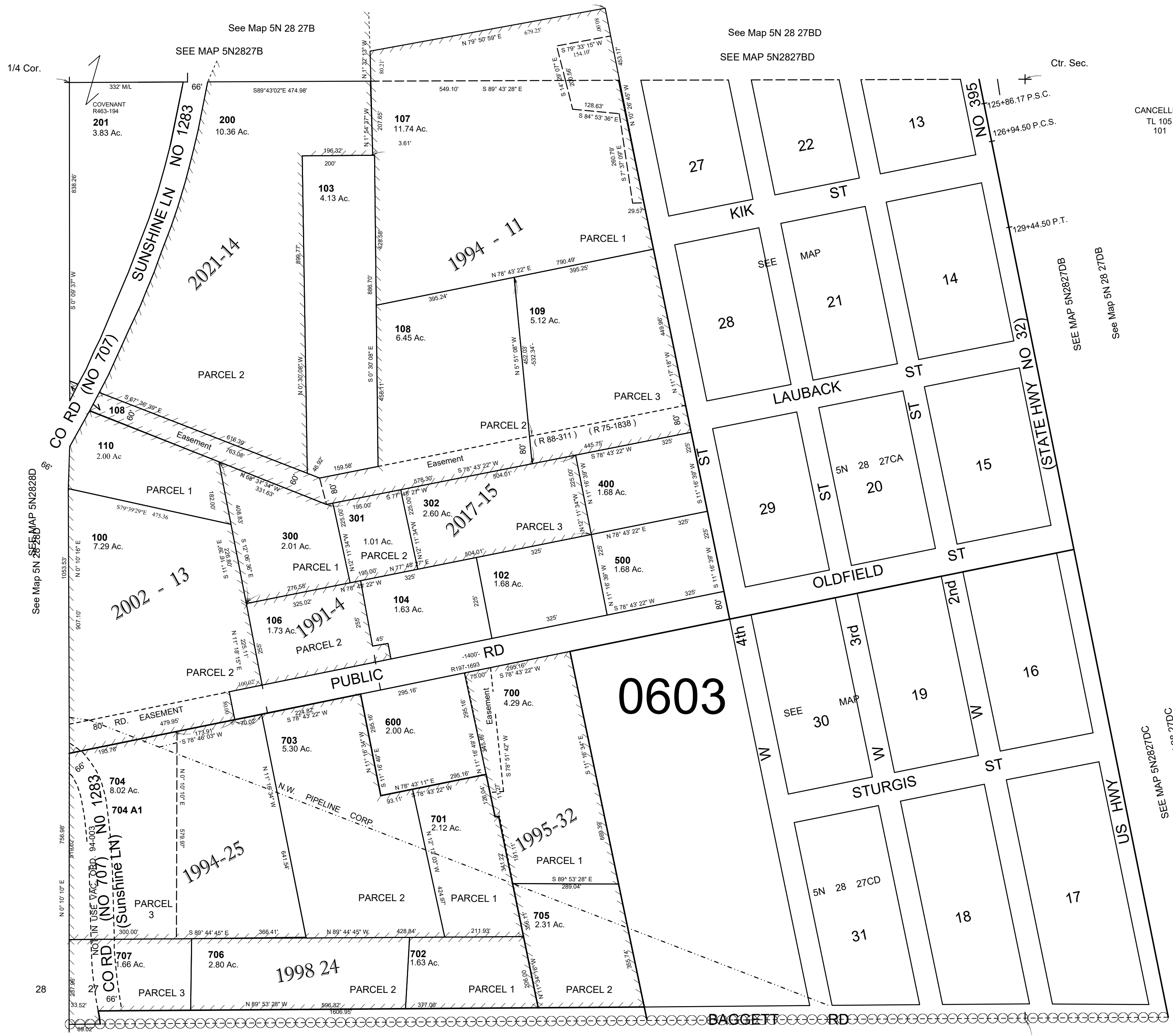


SW 1/4 SEC 27 T 5N R 28E WM UMATILLA COUNTY

SCALE: 1" = 200'

5N2827C

AERIAL PHOTO NO. 1P-104



CANCELLED
TL 105
101

Revised: 06-30-2021

5N2827C