

This map was prepared for assessment purposes

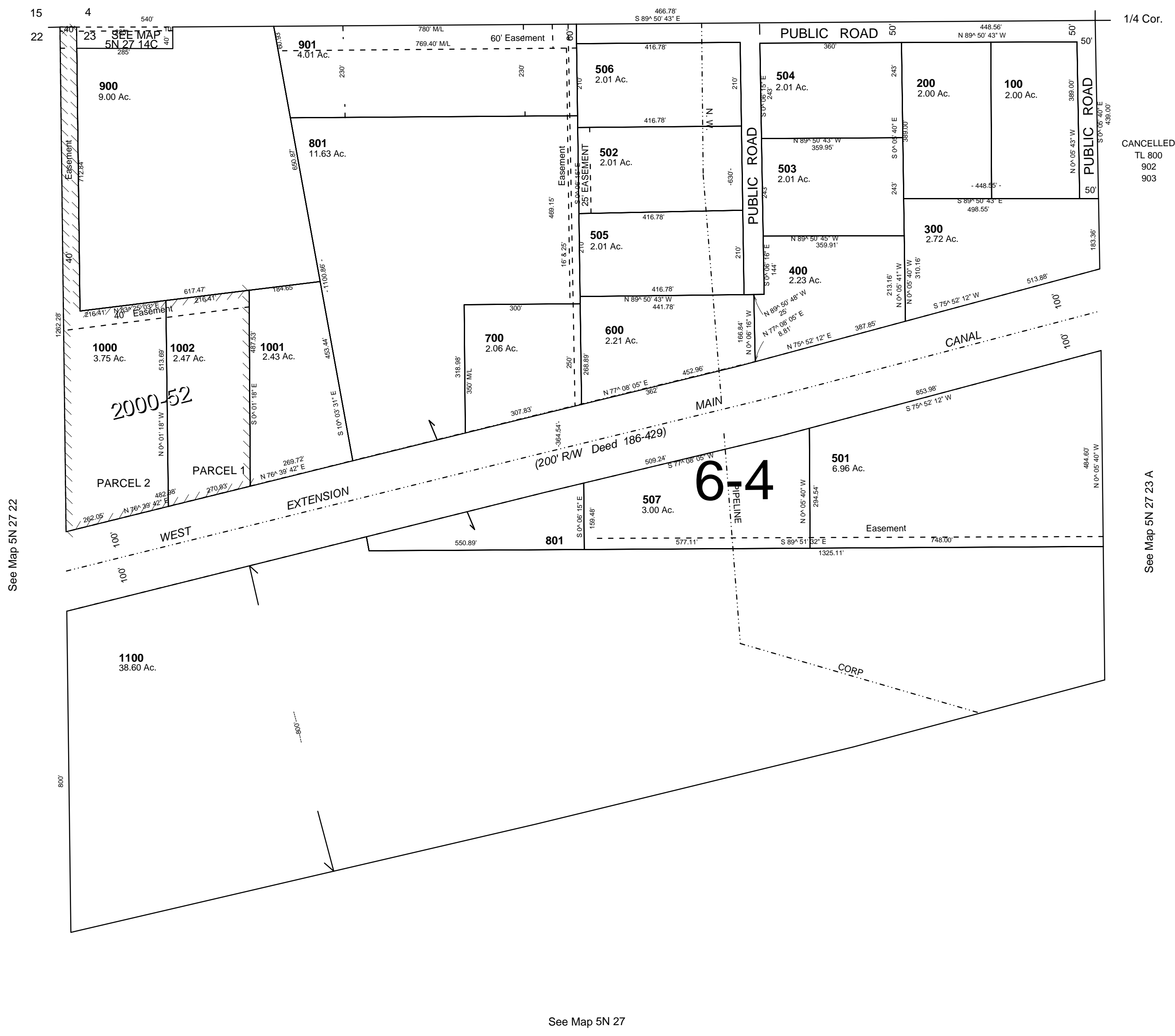
NW 1/4 SEC 23 T5N R27E WM  
UMATILLA COUNTY  
1"=200'

1/26/05

5N 27 23B

AERIAL PHOTO NO. NZ 1P-54

See Map 5N 27 14



See Map 5N 27 22

See Map 5N 27 23 A

See Map 5N 27

1/4 Cor. +

+ Cntr. Sec.

5N 27 23B

CANCELLED  
TL 800  
902  
903