

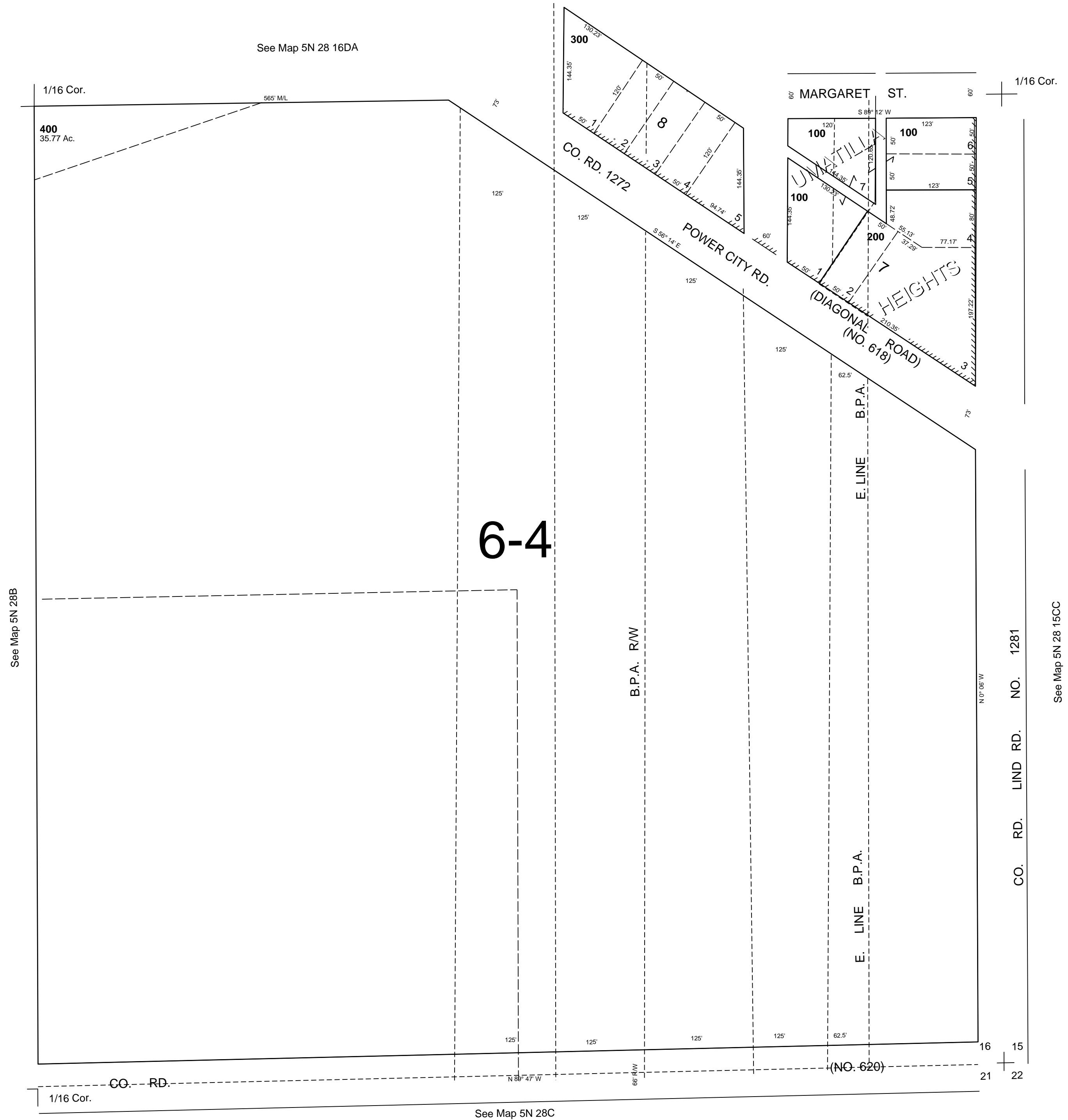
This map was prepared for Assessment & Taxation purposes only and was NOT prepared nor is it suitable for legal, engineering or surveying purposes.

# SE1/4 SE1/4 SEC 16 T5N R28E WM UMATILLA COUNTY

SCALE 1"=100'

Revised: 5/12/08

**5N 28 16DD**  
AERIAL PHOTO NO. 1P-58



**5N 28 16DD**