

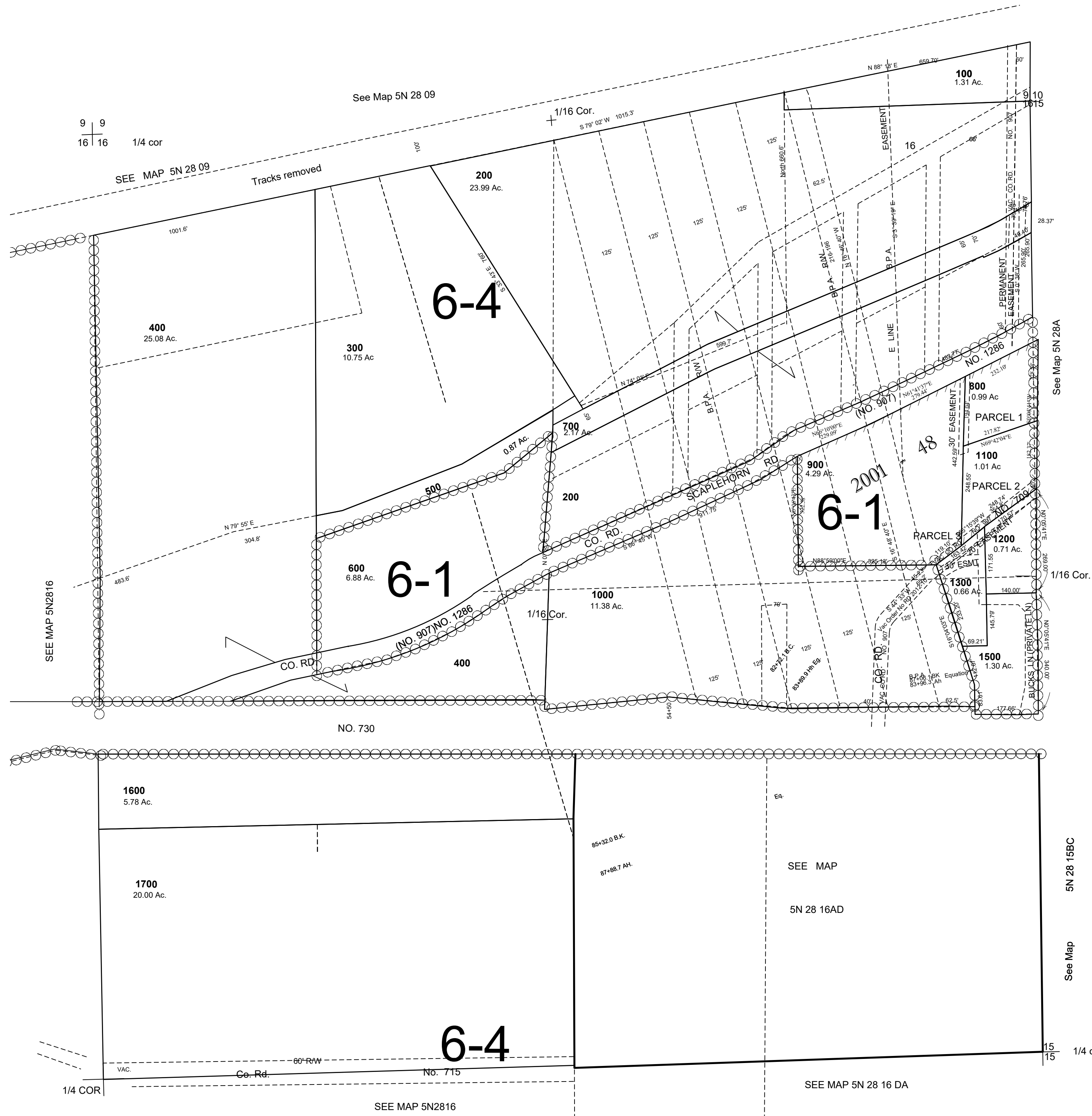
This map was prepared for Assessment & Taxation purposes only and was NOT prepared nor is it suitable for legal, engineering or surveying purposes.

NE1/4 Sec 16 T5N R28E WM UMATILLA COUNTY

5N 28 16A

Aerial Photo No. NZ-1P-58

SCALE 1"=200'



REVISED: 05-08-12

5N 28 16A