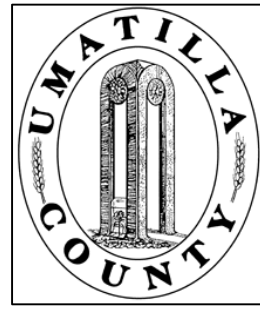


This map was prepared for Assessment & Taxation purposes only and was NOT prepared nor is it suitable for legal, engineering or surveying purposes.

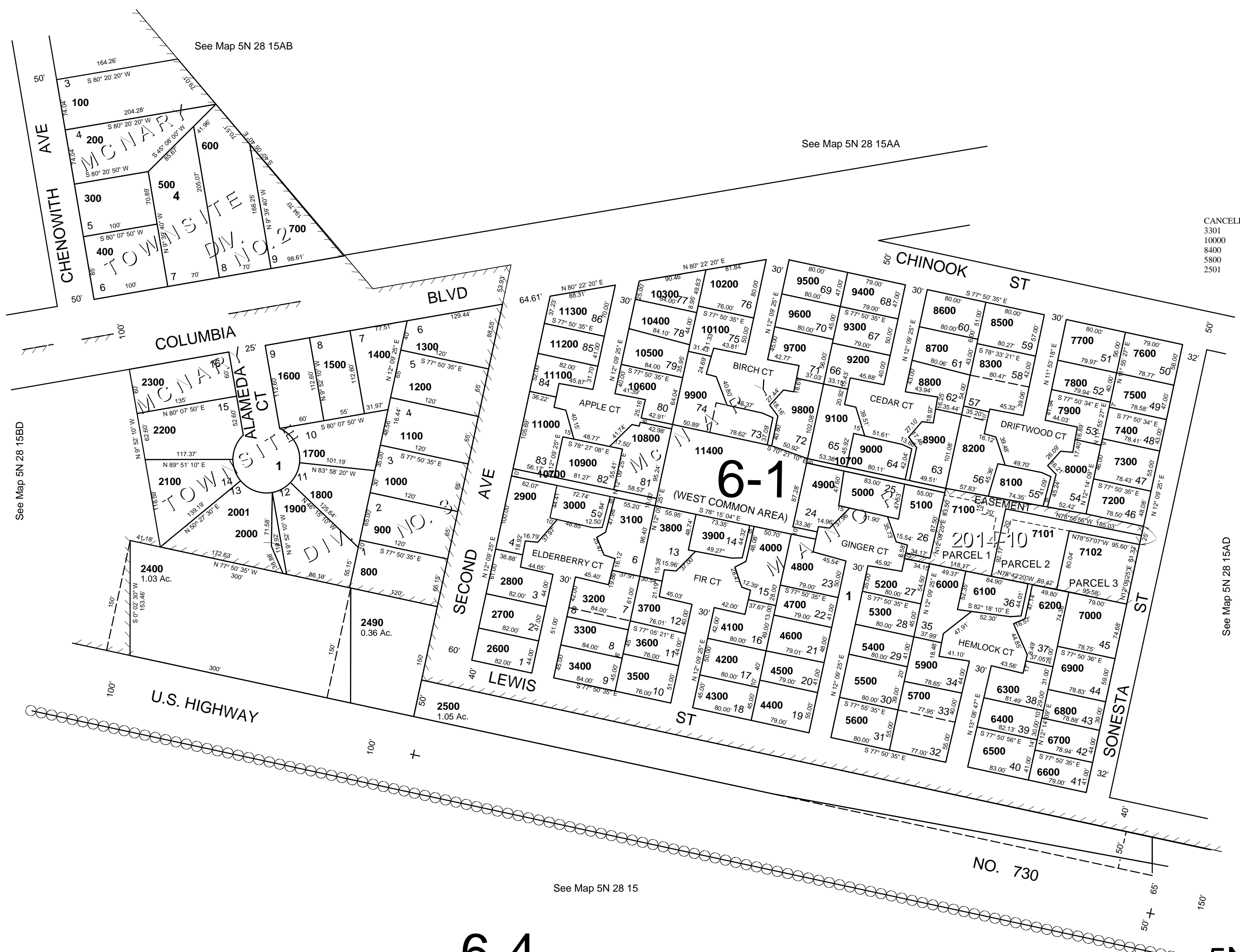


SW1/4 NE1/4 SEC 15 T 5N R 28 E WM UMATILLA COUNTY

5N2815AC

Aerial Photo No. 1P-59

SCALE: 1"=100'



CANCELLED
3301
10000
8400
5800
2501

See Map 5N 28 15AD

See Map 5N 28 15

Revised: 11/21/14

6-4

5N2815AC