

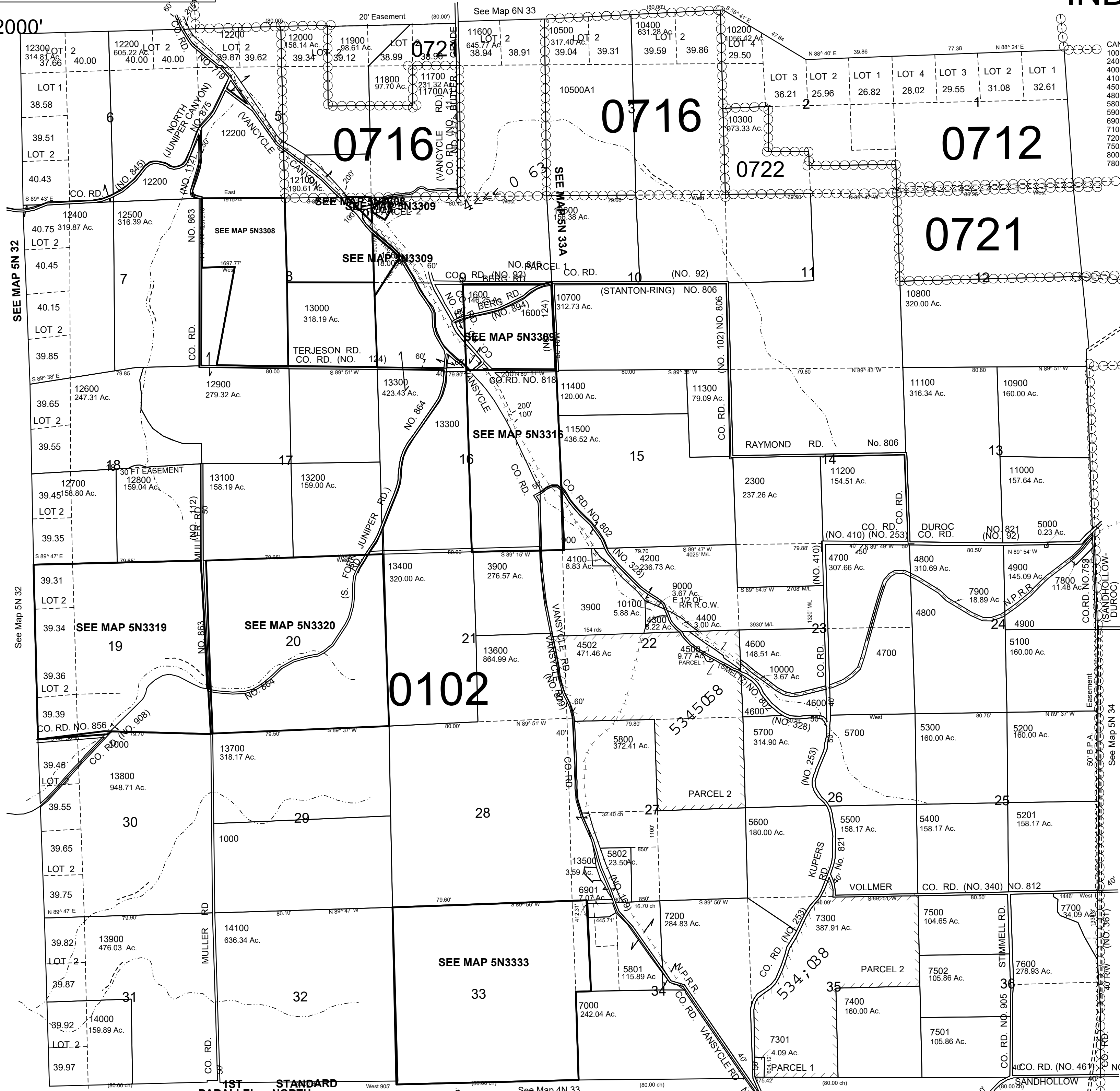
This map was prepared for Assessment & Taxation purposes only and was NOT prepared nor is it suitable for legal, engineering or surveying purposes.

T5N R33E WM UMATILLA COUNTY

AERIAL PHOTO NO. NZ 5P 28-33, 6P 86-90 & 103-107

5N 33 & INDEX

1"=2000'



CANCELED NOS.
100 thru 2200
2400 thru 3800
4000
4100
4501
4800
5803
5900 thru 6900
6902
7100
7200
7502
8000
7800 A1

Revised: 08-19-2021
NO. 825

5N 33

REVISED: 1/2/13

1ST STANDARD
PARALLEL NORTH

See Map 4N 33

See Map 5N 34

See Map 5N 32

See Map 6N 33