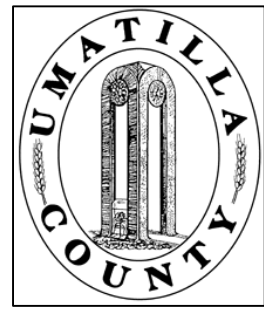


This map was prepared for Assessment & Taxation purposes only and was NOT prepared nor is it suitable for legal, engineering or surveying purposes.

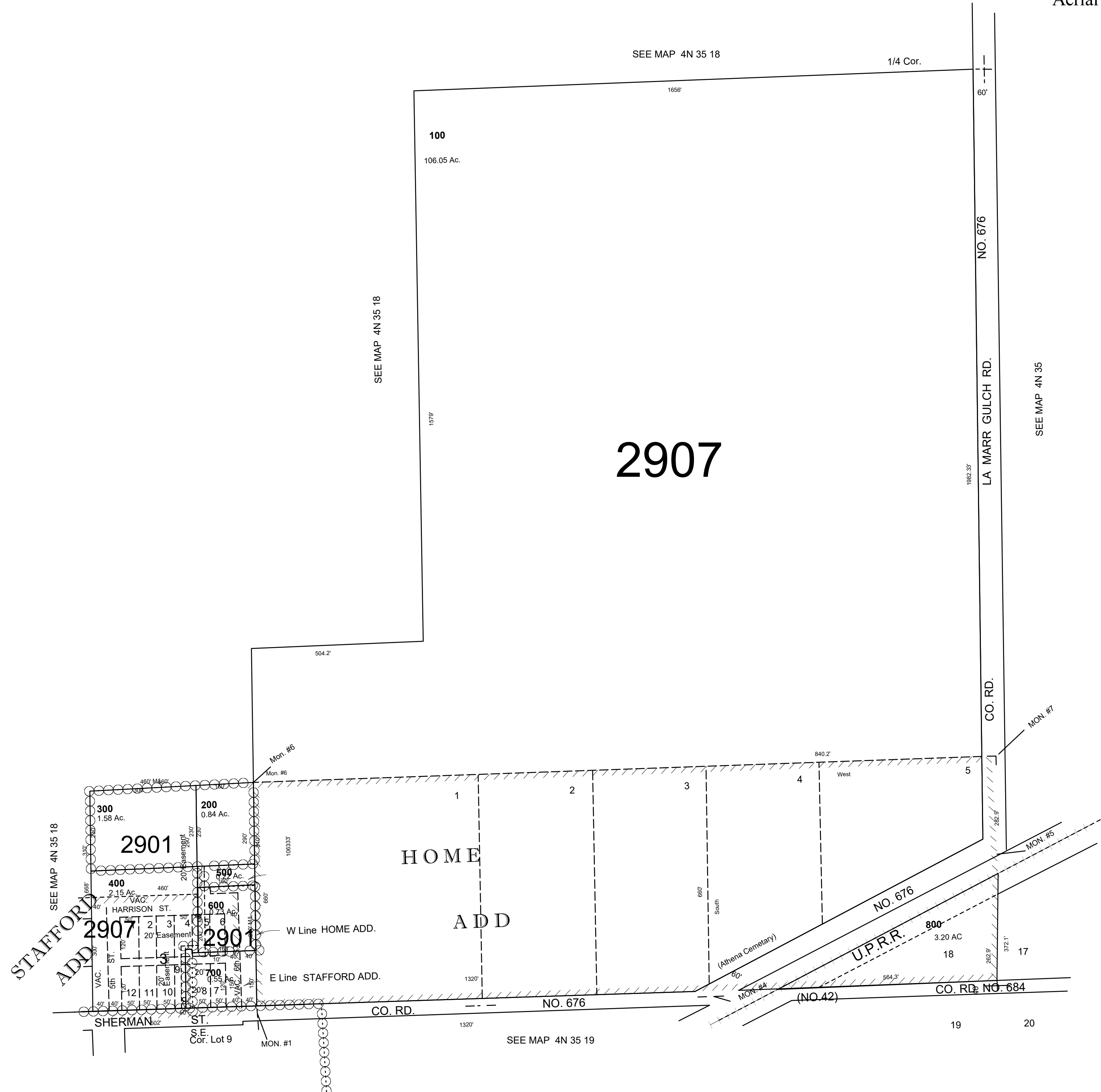


# SE1/4 SEC 18 T 4N R 35 EWM UMATILLA COUNTY

SCALE: 1" = 200'

## 4N3518D

ATHENA  
Staffords Add  
Tillman Add  
Aerial Photo No. NZ-5P-100



Revised: 02-14-18

## 4N3518D