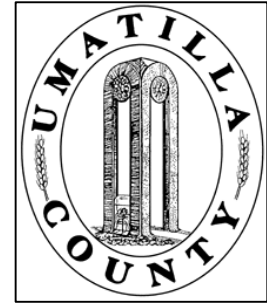


This map was prepared for Assessment & Taxation purposes only and was NOT prepared nor is it suitable for legal, engineering or surveying purposes.

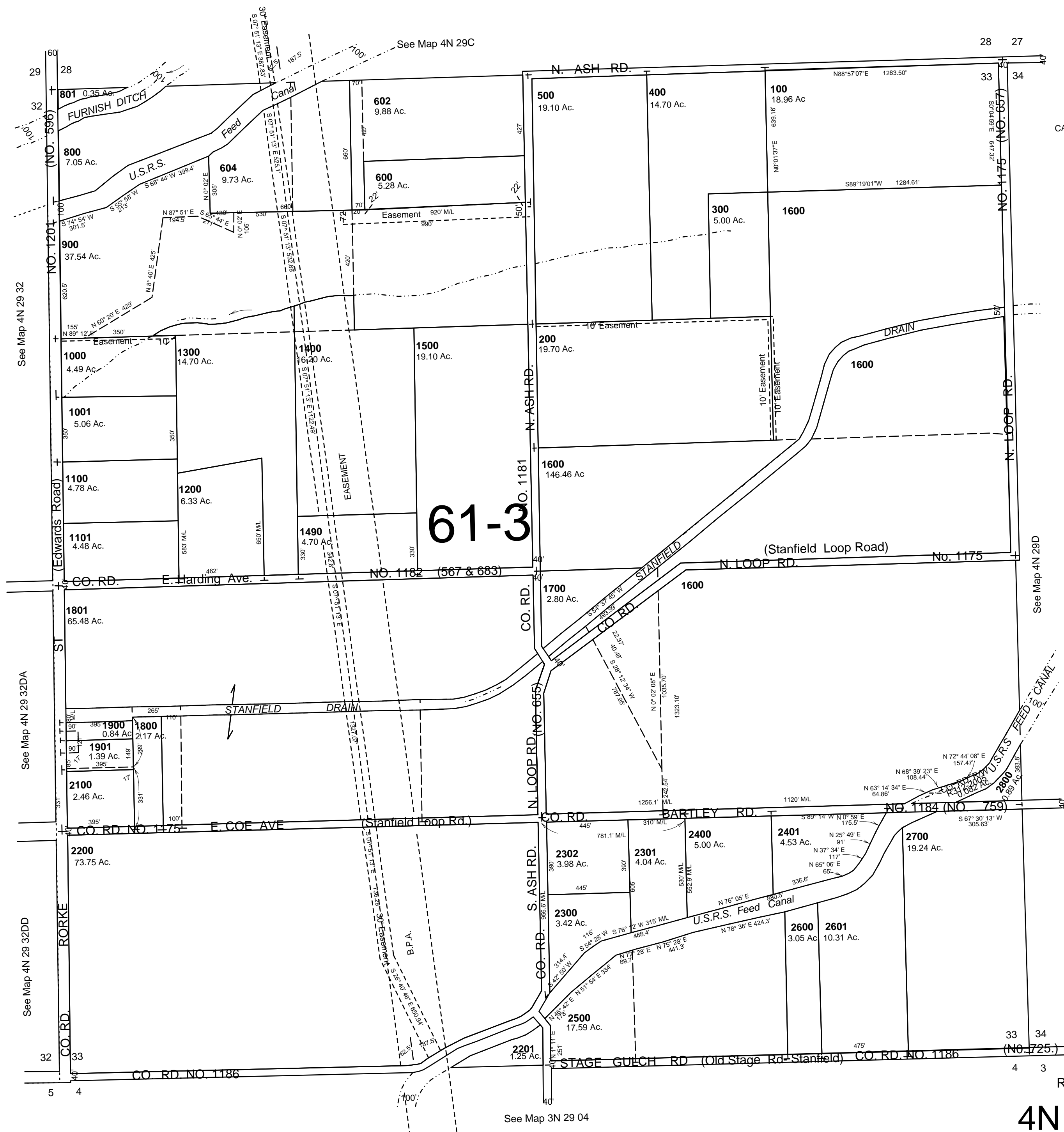


SEC 33 T4N R29E WM UMATILLA COUNTY

4N 29 33

AERIAL PHOTO NO. NZ-2P-47

SCALE: 1" = 400'



CANCELLED
TL 2000
2101
901
902
601
700
603

Revised: 1/12/11

4N 29 33