

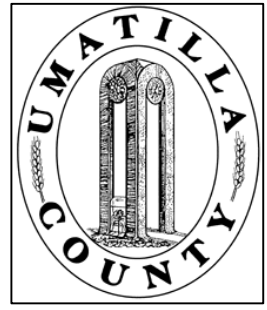
This map was prepared for Assessment & Taxation purposes only and was NOT prepared nor is it suitable for legal, engineering or surveying purposes

# SE1/4 NW1/4 SEC 32 T4N R29E WM

## 4N2932BD

## UMATILLA COUNTY, OR

SCALE 1" = 100'

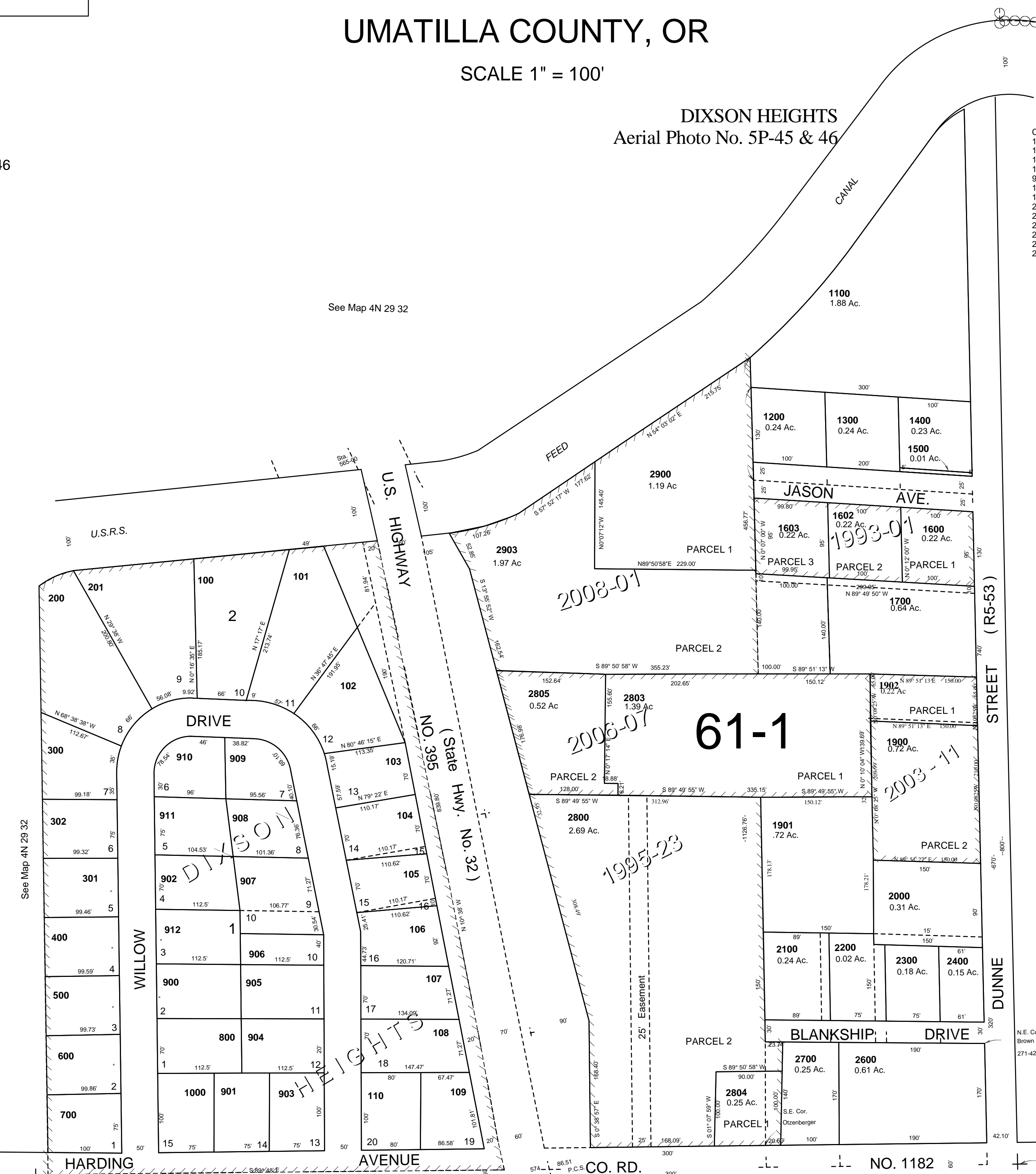


AERIAL PHOTO NO 2P 45-46

DIXSON HEIGHTS  
Aerial Photo No. 5P-45 & 46

- CANCELLED
- 111
- 112
- 113
- 114
- 913
- 1601
- 1800
- 2500
- 2701
- 2801
- 2802
- 2901
- 2902

See Map 4N 29 32



See Map 4N 29 32

See Map 4N 29 32AC

Revised: 11-25-13

See Map 4N 29 32CA

## 4N2932BD