

This map was prepared for Assessment and Taxation purposes only and has NOT been prepared for legal, engineering or surveying purposes.

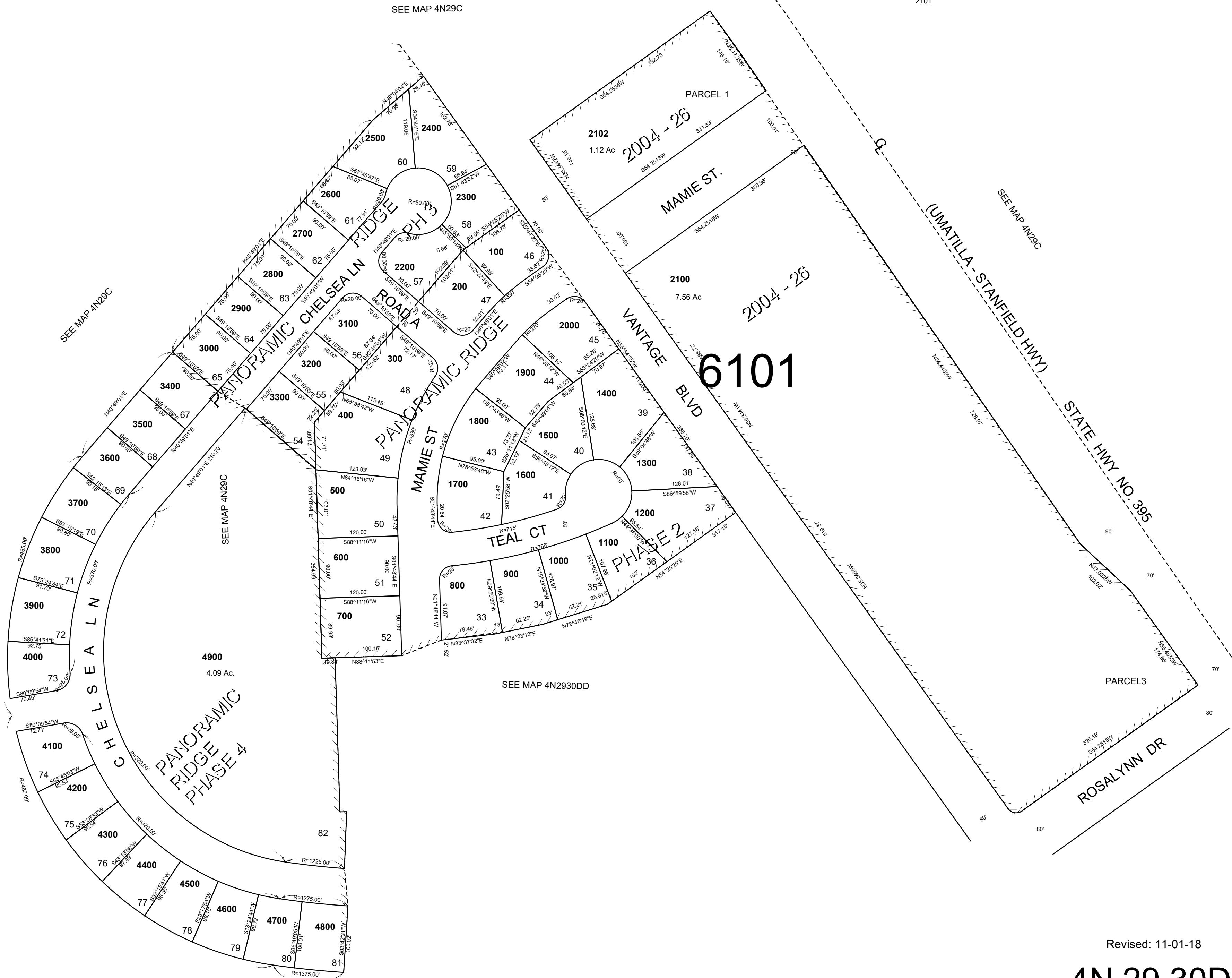
NE1/4 SE1/4 SEC 30 T4N R29E WM

4N 29 30DA

UMATILLA COUNTY

AERIAL PHOTO NO NZ 2P 18-20 & 43-46

1"=100'



Revised: 11-01-18

4N 29 30DA