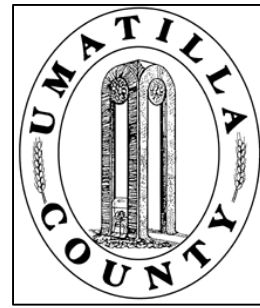


This map was prepared for Assessment & Taxation purposes only and was NOT prepared nor is it suitable for legal, engineering or surveying purposes.

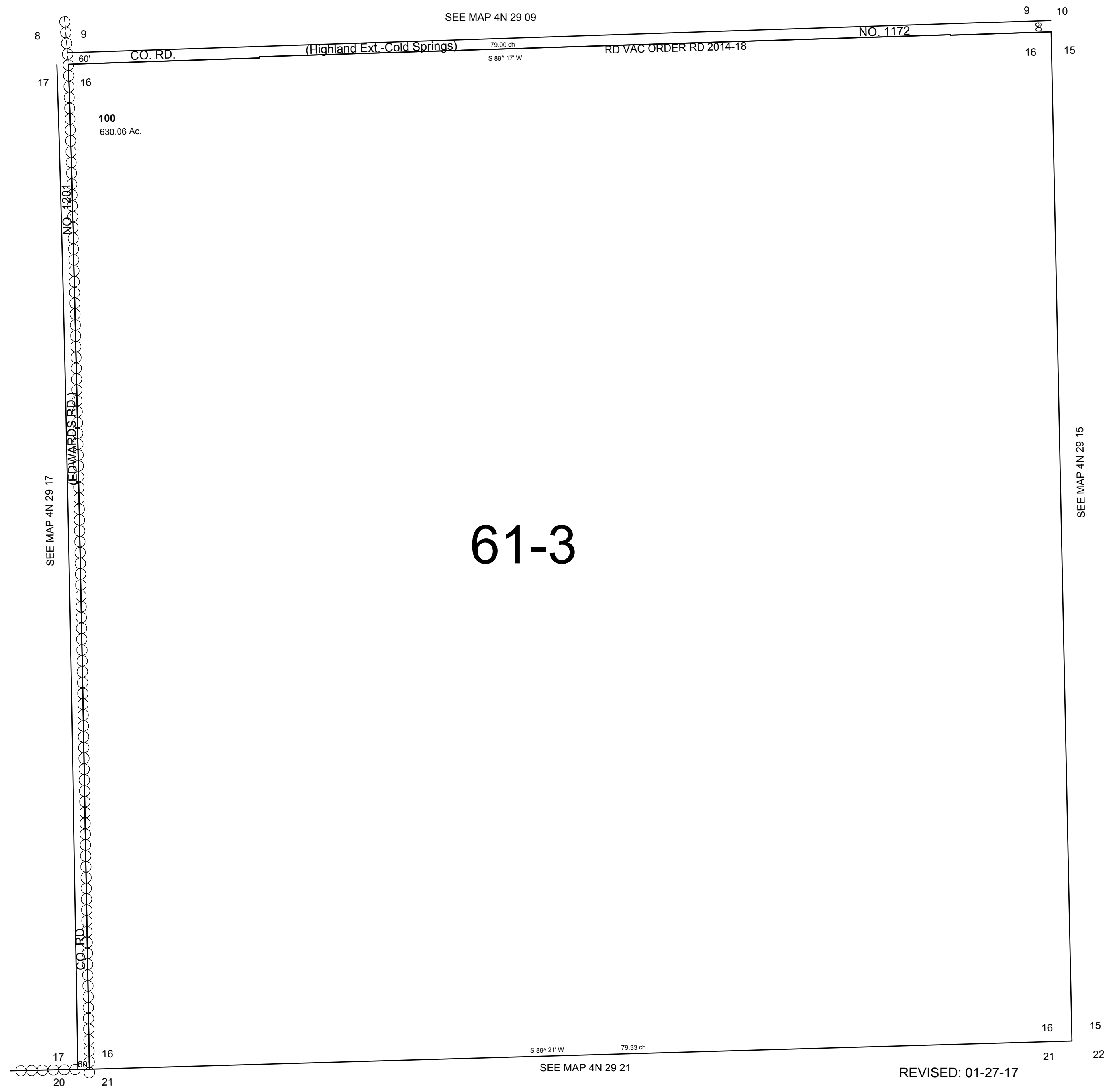


# SEC 16 T4N R29E WM UMATILLA COUNTY

SCALE: 1" = 400'

## 4N 29 16

AERIAL PHOTO NO. NZ2P 18-20 & 1P 124-126



## 4N 29 16