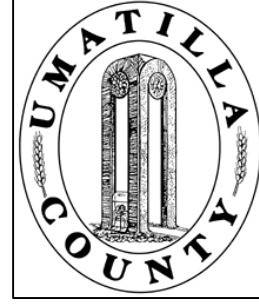


This map was prepared for Assessment & Taxation purposes only and was NOT prepared nor is it suitable for legal, engineering or surveying purposes.

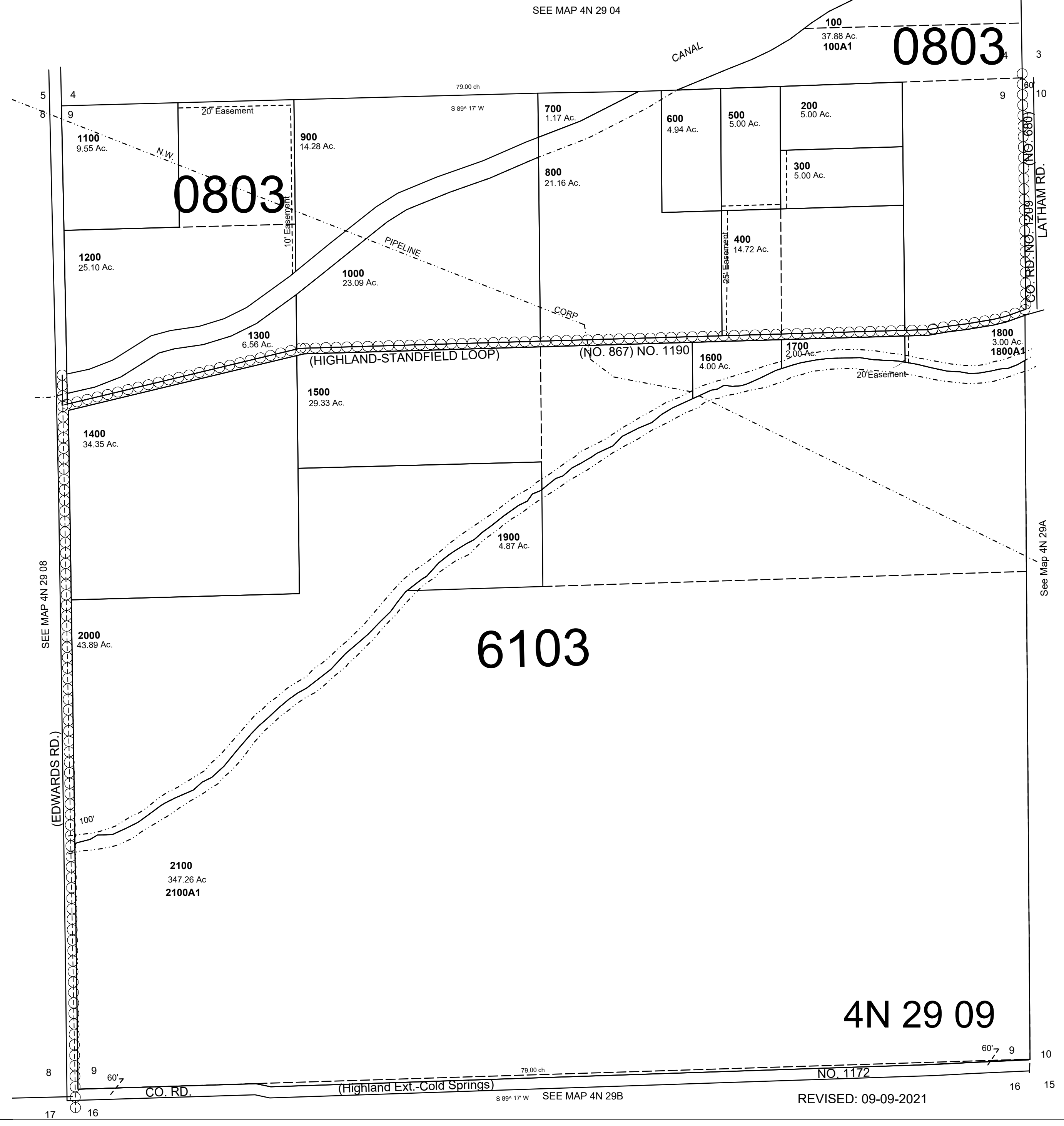


SEC 9 T4N R29E WM UMATILLA COUNTY, OR

SCALE: 1" = 400'

4N 29 09

AERIAL PHOTO NO. NZ-2P 18-20
1P 124-126



0803

0803

6103

4N 29 09

REVISED: 09-09-2021