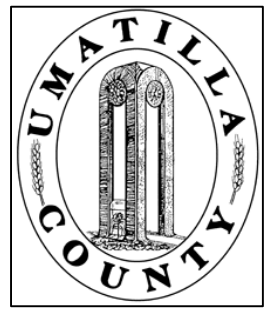


This map was prepared for Assessment & Taxation purposes only and was NOT prepared nor is it suitable for legal, engineering or surveying purposes.



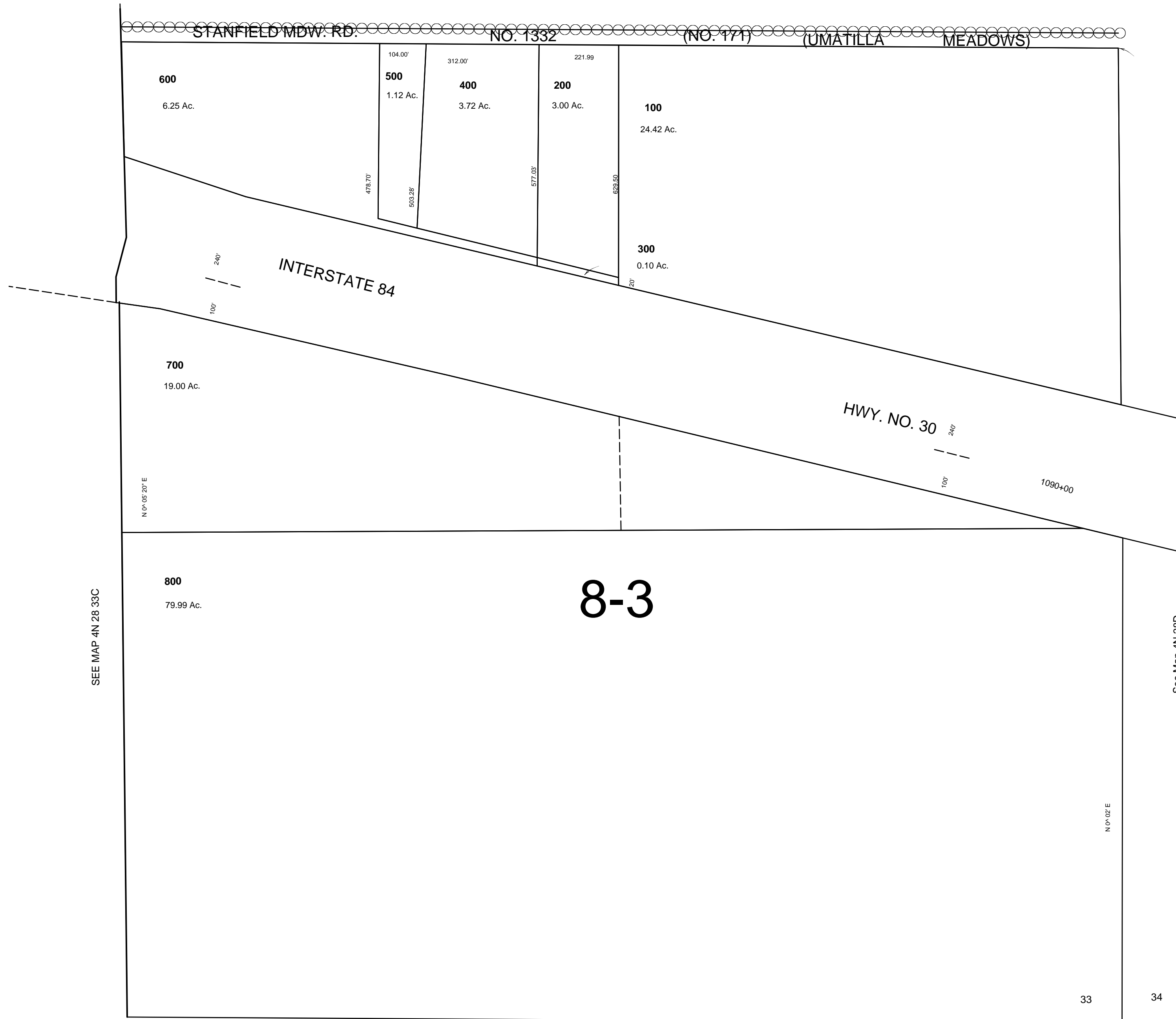
SE1/4 SEC 33 T4N R33E WM UMATILLA COUNTY

SCALE: 1" = 200'

4N 28 33D

AERIAL PHOTO NO. NZ-2P-25 & 26

SEE MAP 4N 28C



SEE MAP 3N 28

10/13/03

4N 28 33D