

This map was prepared for Assessment & Taxation purposes only and was NOT prepared nor is it suitable for legal, engineering or surveying purposes.

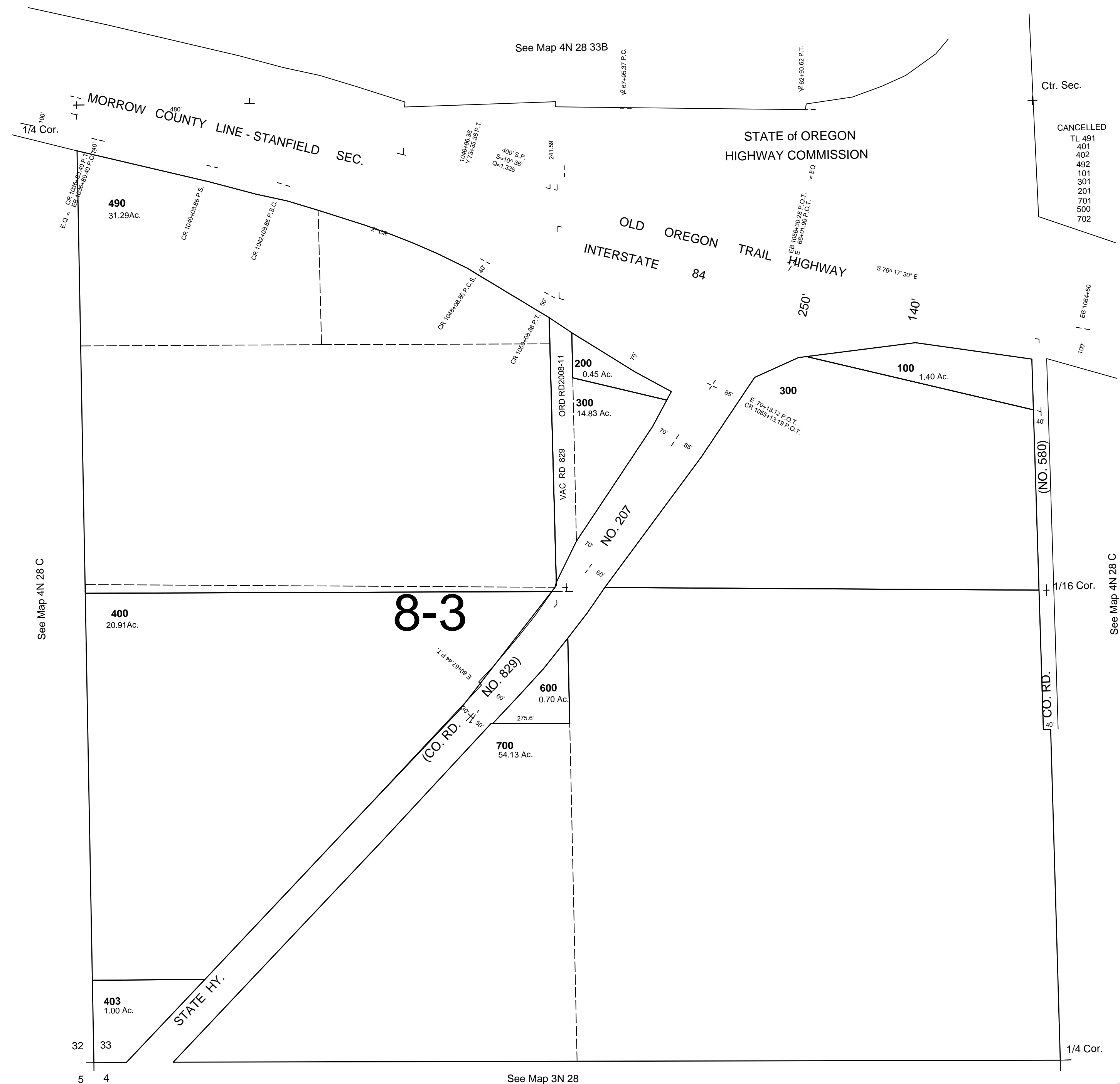
# SW 1/4 SEC 33 T4N R28E WM UMATILLA COUNTY

SCALE 1"=200'

REVISED 1/18/18

## 4N 28 33C

AERIAL PHOTO NO. 2P-141



## 4N 28 33C