

This map was prepared for Assessment & Taxation purposes only and was NOT prepared nor is it suitable for legal, engineering or surveying purposes.

NW 1/4 SEC 17 T4N R28E WM
UMATILLA COUNTY
SCALE 1"=200'

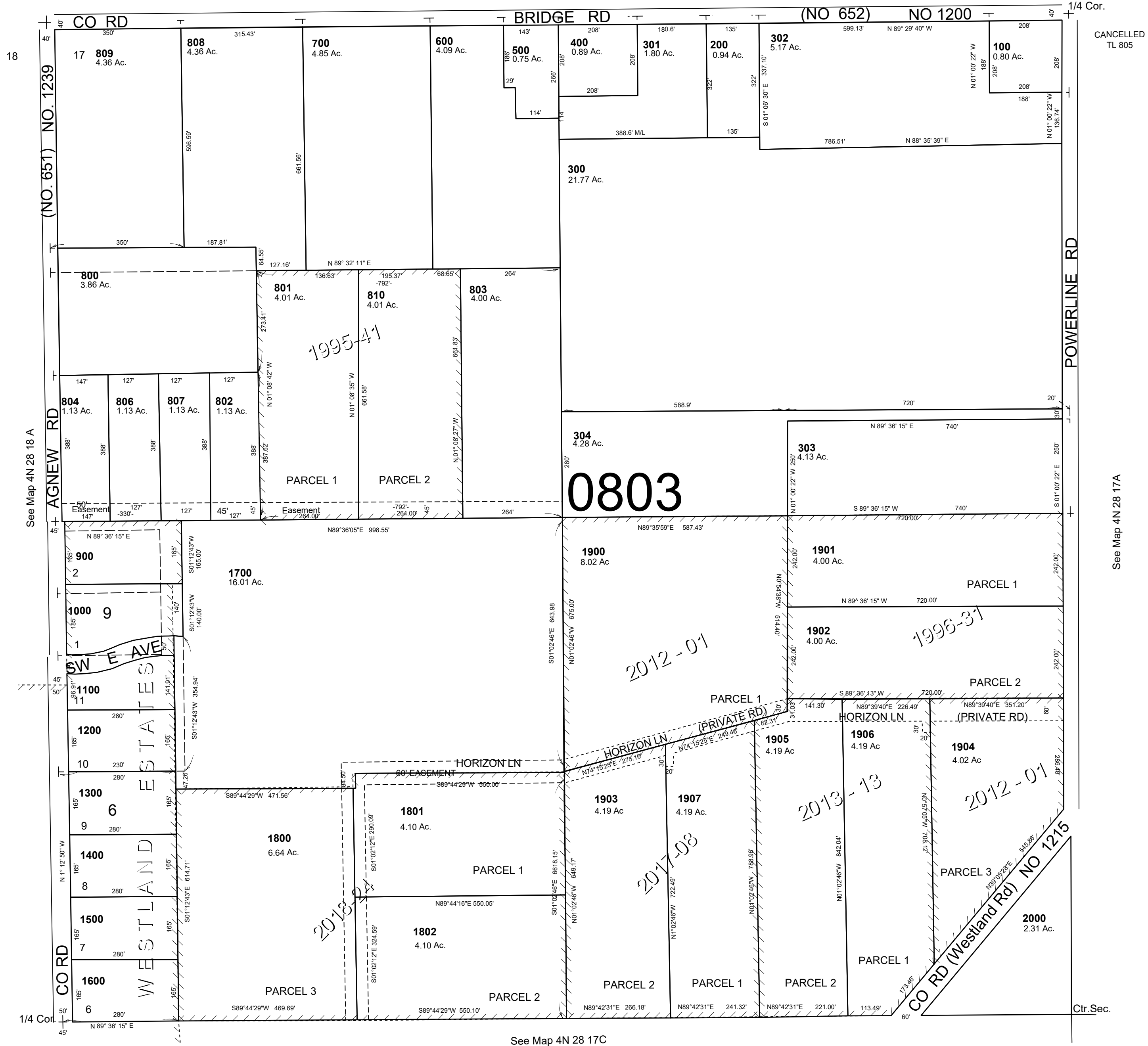
4N 28 17B

AERIAL PHOTO NO. NZ 2P-25

7

8

See Map 4N 28 8C



CANCELLED
TL 805

See Map 4N 28 17A

See Map 4N 28 17C

Revised: 01-07-19

4N 28 17B