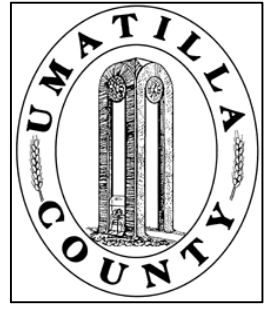


This map was prepared for Assessment & Taxation purposes only and was NOT prepared nor is it suitable for legal, engineering or surveying purposes.



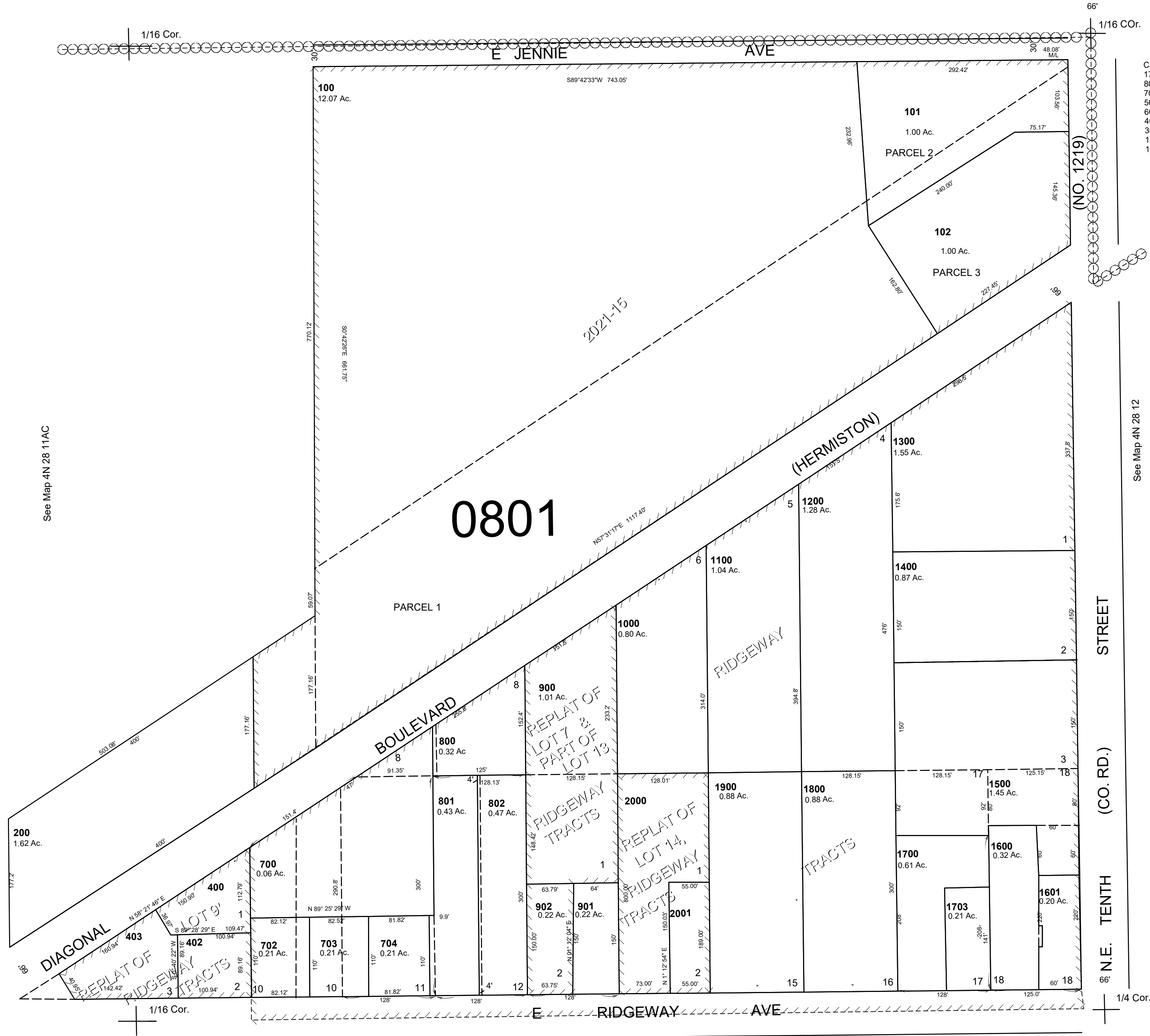
# SE1/4 NE1/4 SEC 11 T 4N R 28E WM UMATILLA COUNTY, OR

## 4N 28 11AD

AERIAL PHOTO NO. NZ-1P-123

SCALE: 1" = 100'

See Map 4N 28 11



CANCELLED  
1701  
803  
701  
500  
600  
401  
300  
1401  
1702

See Map 4N 28 11AC

See Map 4N 28 12

See Map 4N 28 11DA

Revised: 06-04-2021

## 4N 28 11AD