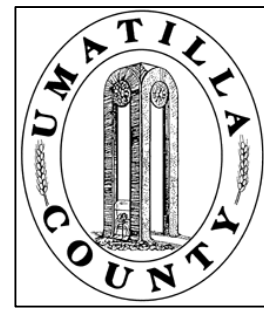


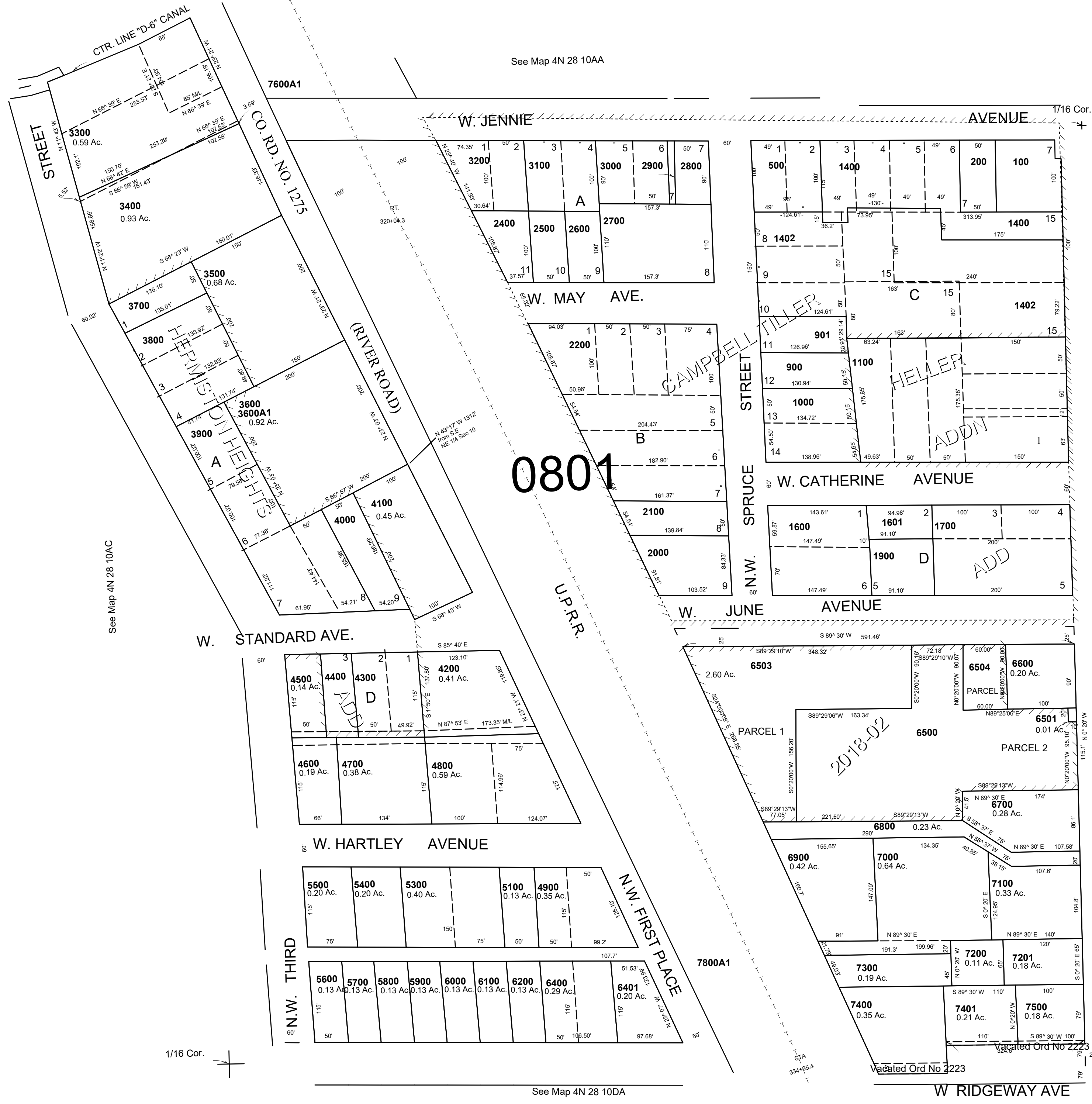
This map was prepared for Assessment & Taxation purposes only and was NOT prepared nor is it suitable for legal, engineering or surveying purposes.



# SE1/4 NE1/4 SEC 10 T4N R28E WM UMATILLA COUNTY

4N2810AD

SCALE: 1" = 100'



- CANCELLED
- TL 1500
  - TL 7402
  - 1800
  - 1900
  - 2300
  - 2301
  - 2302
  - 2303
  - 2304
  - 2305
  - 7700
  - 300
  - 600
  - 700
  - 800
  - 1401
  - 5200
  - 4201
  - 6300
  - 5000
  - 400
  - 1200
  - 1300
  - 3302

See Map 4N 28 11BC

1/16 Cor.

See Map 4N 28 10DA

See Map 4N 28 11BC

1/4 Cor. REVISED: 06-12-18

4N2810AD