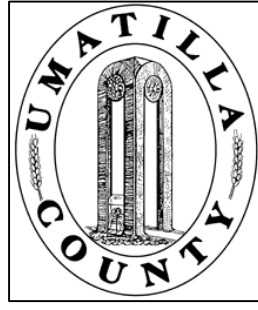


This map was prepared for Assessment and Taxation purposes only and has NOT been prepared for legal, engineering or surveying purposes.



SW1/4 NE1/4 SEC 10 T4N R28E WM UMATILLA COUNTY, OR

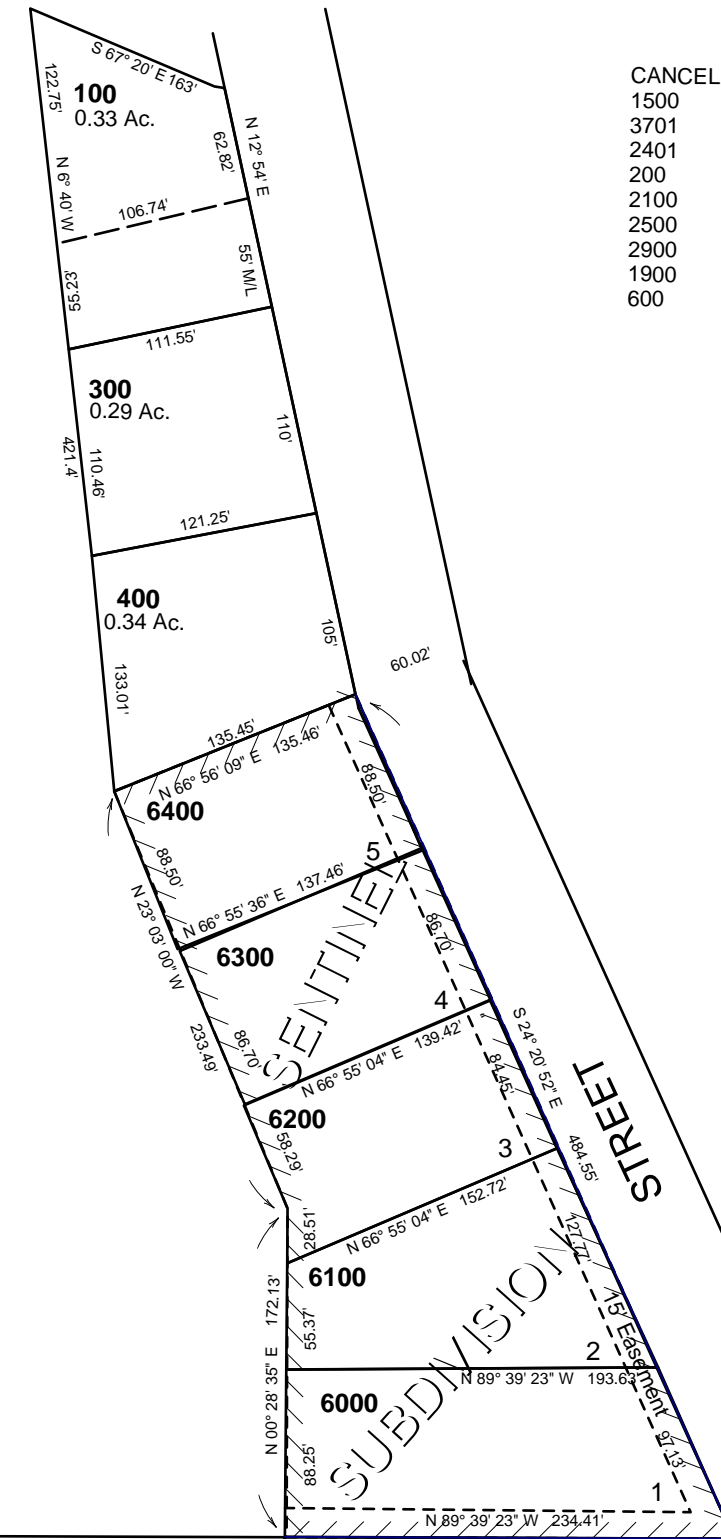
SCALE: 1" = 100'

4N2810AC

HERMISTON
Hermiston Heights Add
Blk B & C
Rockwood Est.
Aerial Photo No. NZ-1P-122

Revised: 1/8/08

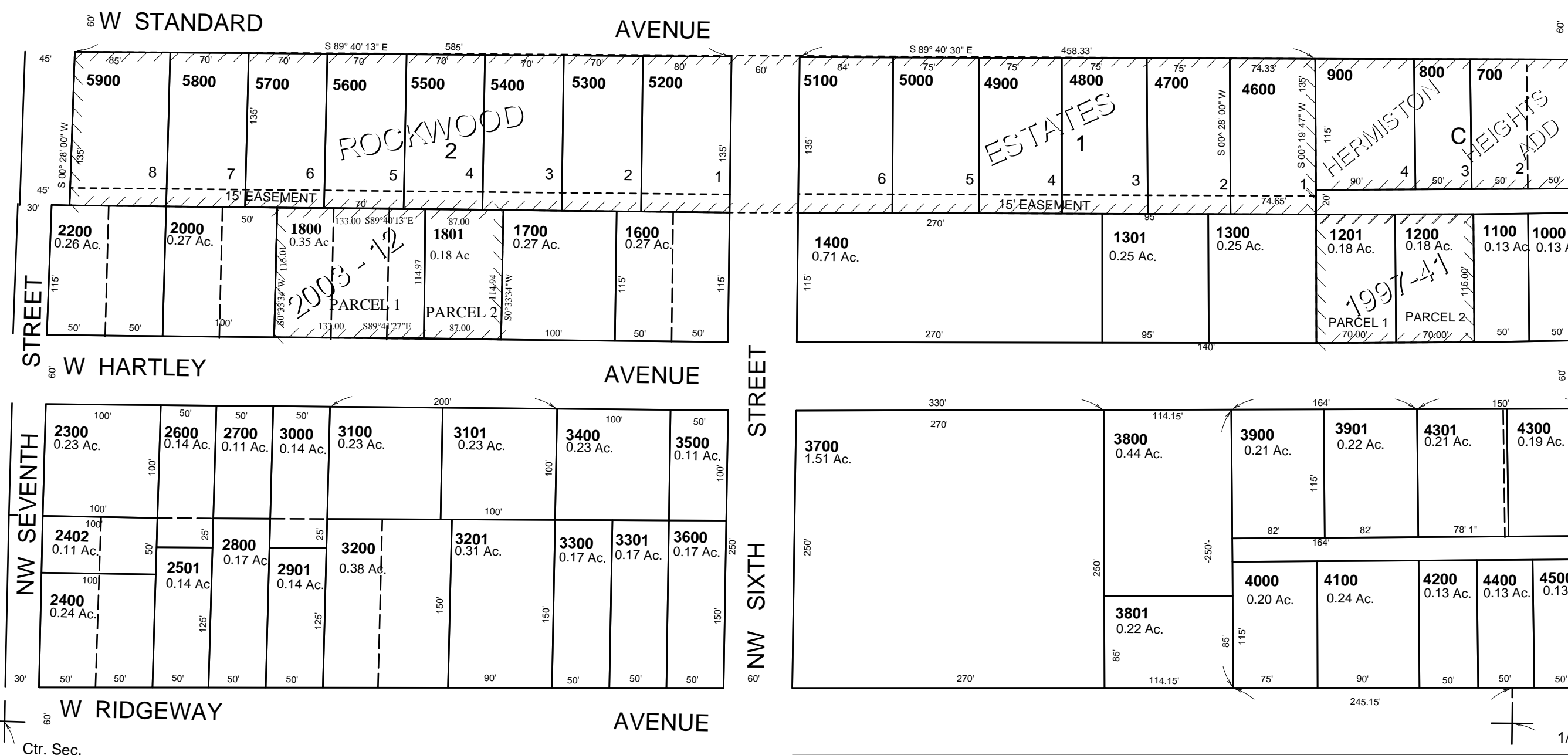
See Map 4N 28 10AB



CANCELLED
1500
1500
3701
2401
200
2100
2500
2900
1900
600

8-1

See Map 4N 28 10



See Map 4N 28 10B

See Map 4N 28 10AD

See Map 4N 28 10DB

1/16 Cor.

4N2810AC