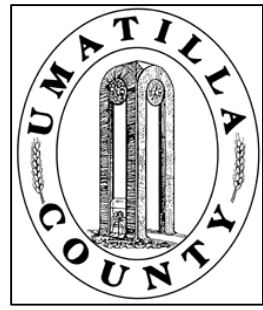


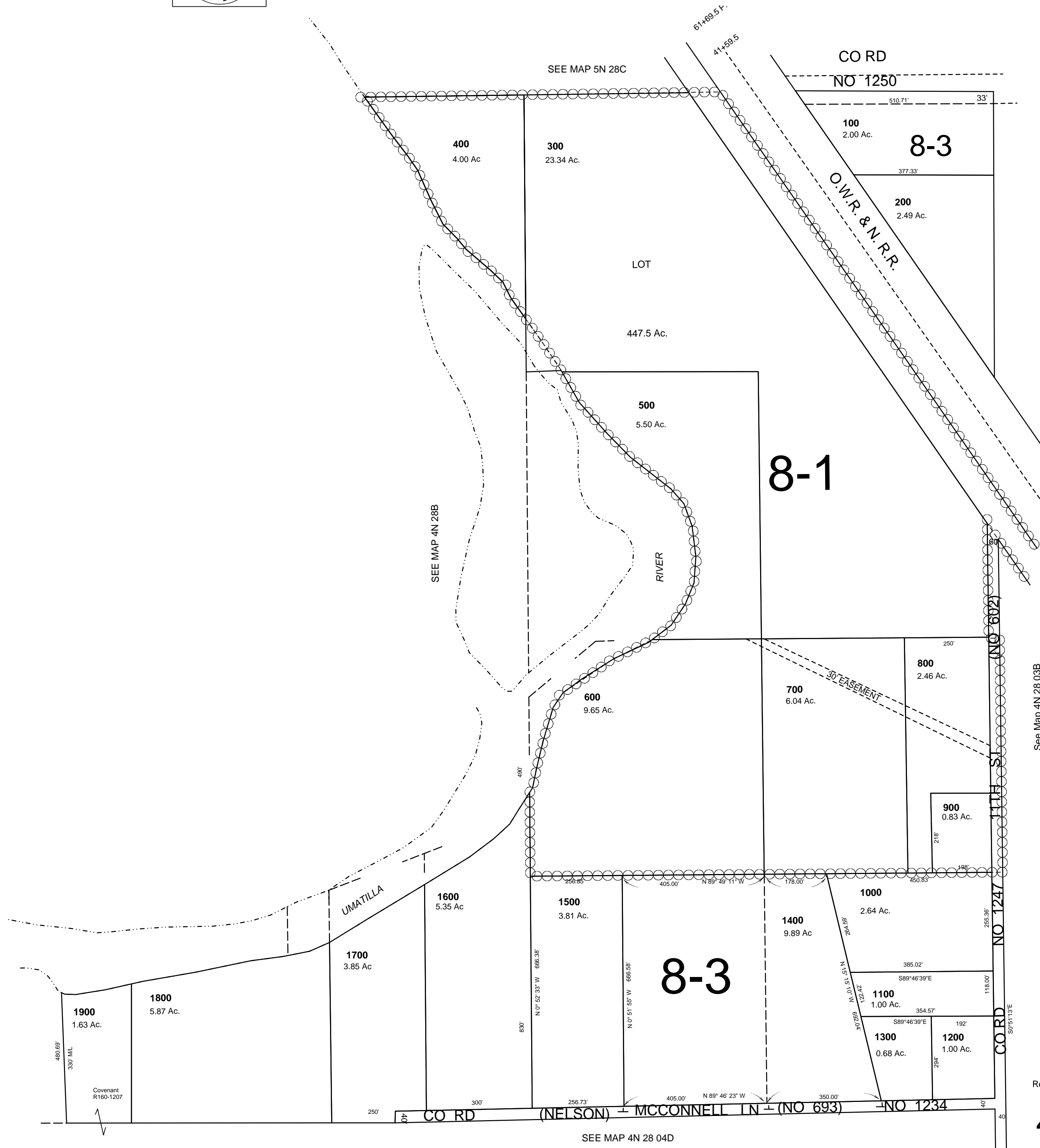
This map was prepared for Assessment & Taxion purposes only and was NOT prepared nor is it suitable for legal, engineering or surveying purposes.



# NE1/4 SEC 4 T 4N R 28E WM UMATILLA COUNTY

SCALE: 1" = 200'

**4N 28 04A**  
AERIAL PHOTO NO. NZ-2P-25-26  
1P-119-120



See Map 4N 28 03B

Revised: 11/12/13

**4N 28 04A**