

This map was prepared for Assessment & Taxation purposes only and was NOT prepared nor is it suitable for legal, engineering or surveying purposes.

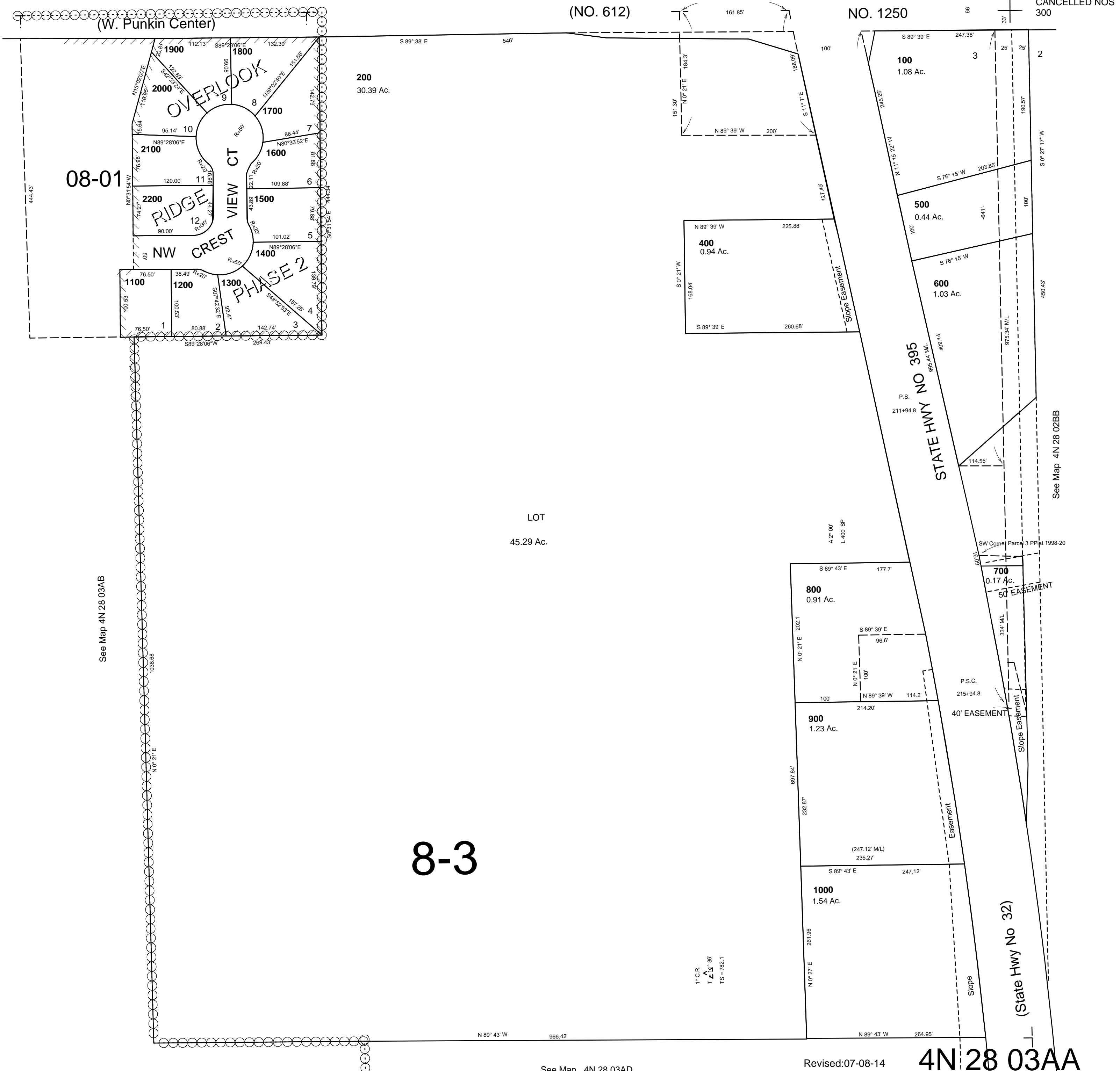
# NE1/4 NE1/4 SEC 3 T4N R28E WM UMATILLA COUNTY

4N 28 03AA  
AERIAL PHOTO NO 1P-123

1" = 100'

See Map 5N 28 34D

34 35



LOT  
45.29 Ac.

## 8-3

1" C.R.  
1/4" = 30'  
TS = 782.1'

See Map 4N 28 03AD

Revised:07-08-14

4N 28 03AA