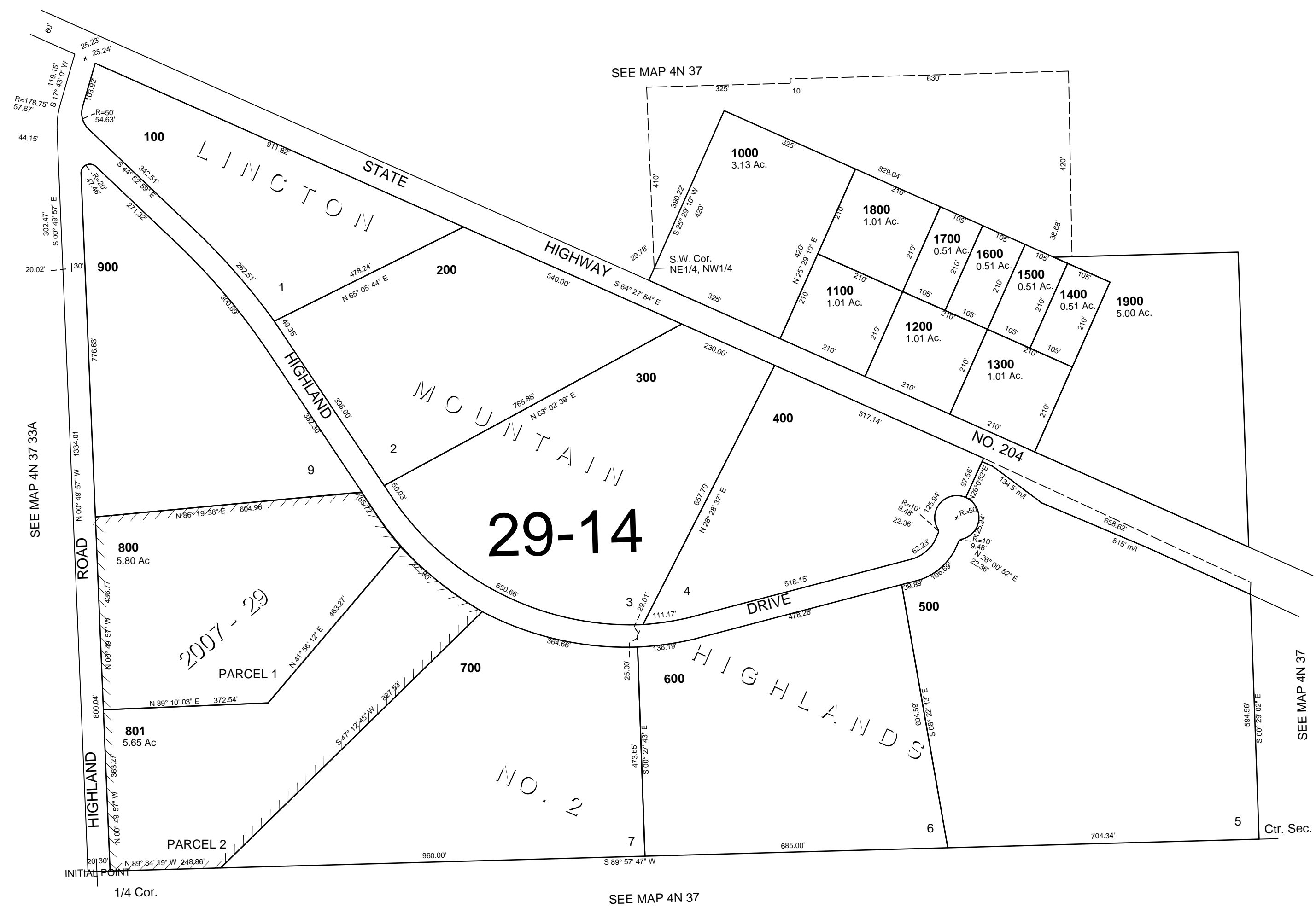


This map was prepared for Assessment & Taxation purposes only and was NOT prepared nor is it suitable for legal, engineering or surveying purposes.

NW1/4 SEC 34 T4N R37E WM
UMATILLA COUNTY
SCALE 1"=200'

Revised: 12/24/07

4N 37 34B
AERIAL PHOTO NO 9P-36



4N 37 34B