

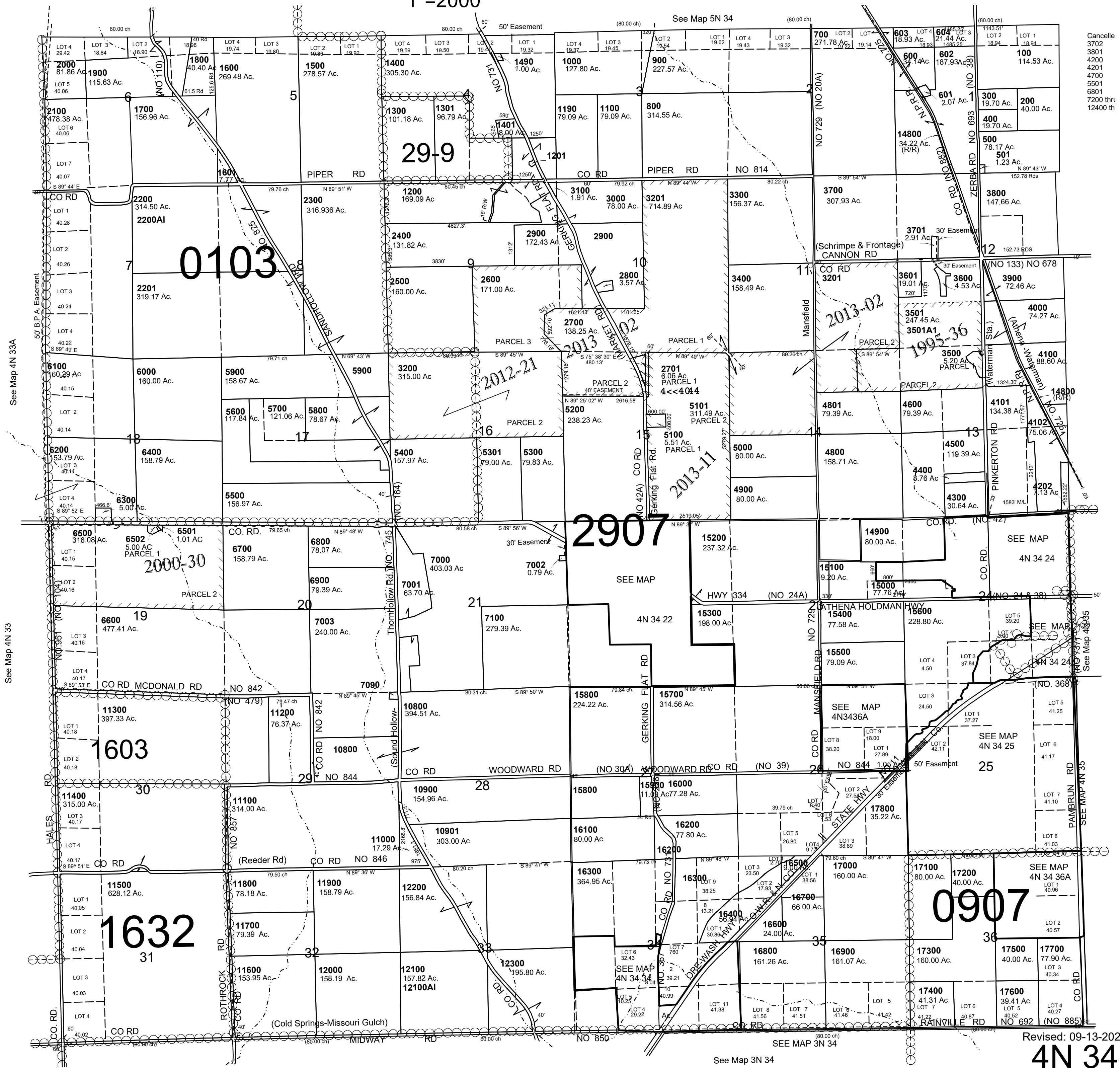
This map was prepared for Assessment & Taxation purposes only and was NOT prepared nor is it suitable for legal, engineering or surveying purposes.

T4N R34E WM UMATILLA COUNTY

4N 34

AERIAL PHOTO NO. NZ-5P 54-60, 100-105, 132-136

1"=2000'



Cancelled
3702
3801
4200
4201
4700
5501
6801
7200 thr.
12400 th

Revised: 09-13-2021

4N 34