

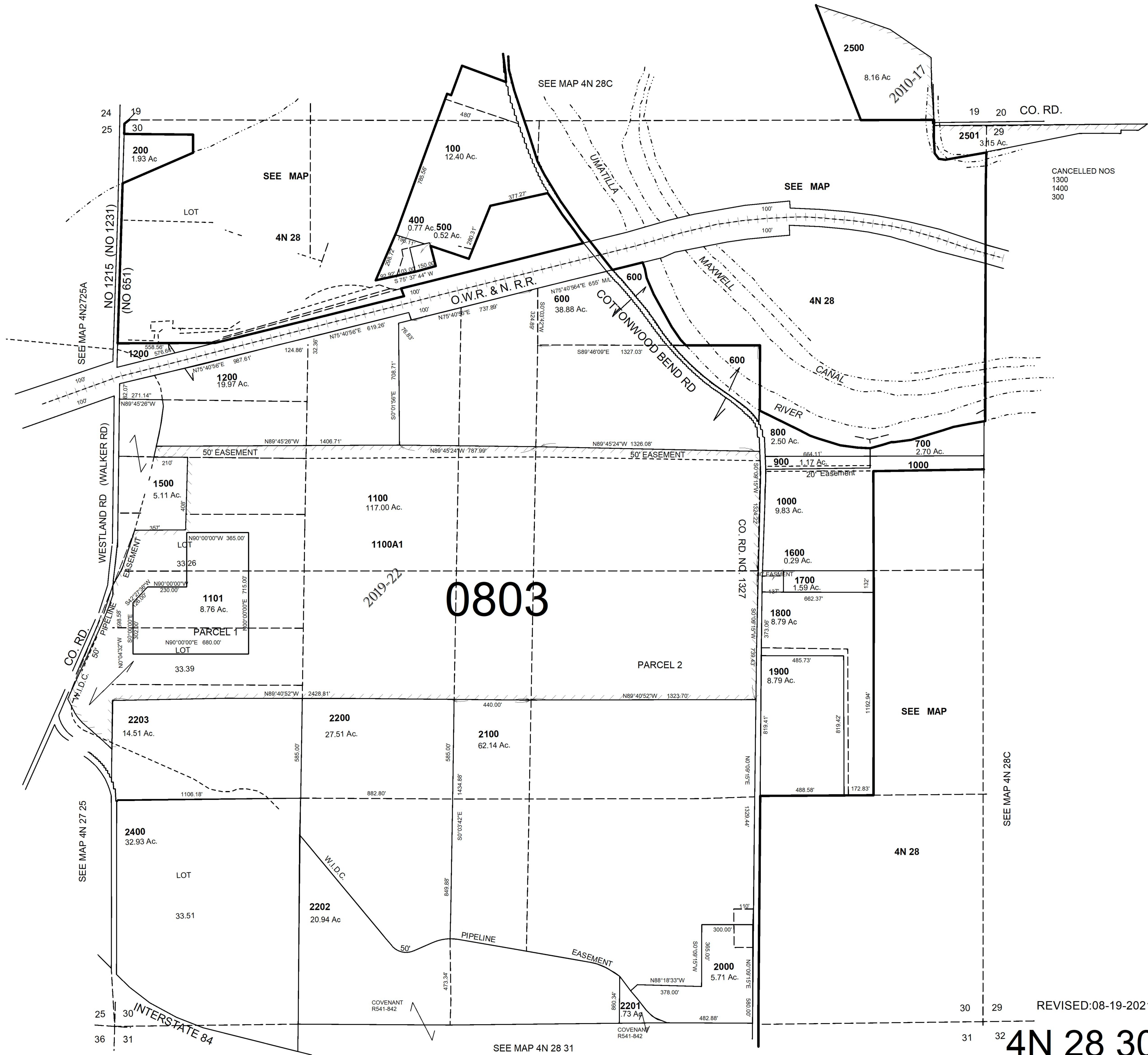
This map was prepared for Assessment & Taxation purposes only and was NOT prepared nor is it suitable for legal, engineering or surveying purposes.

SEC 30 T4N R28E WM
UMATILLA COUNTY

1"=400'

4N 28 30

AERIAL PHOTO NO 2P 25-26
& 39-40



CANCELLED NOS
1300
1400
300

0803

REVISED:08-19-2021

4N 28 30