

This map was prepared for Assessment & Taxation purposes only and was NOT prepared nor is it suitable for legal, engineering or surveying purposes.

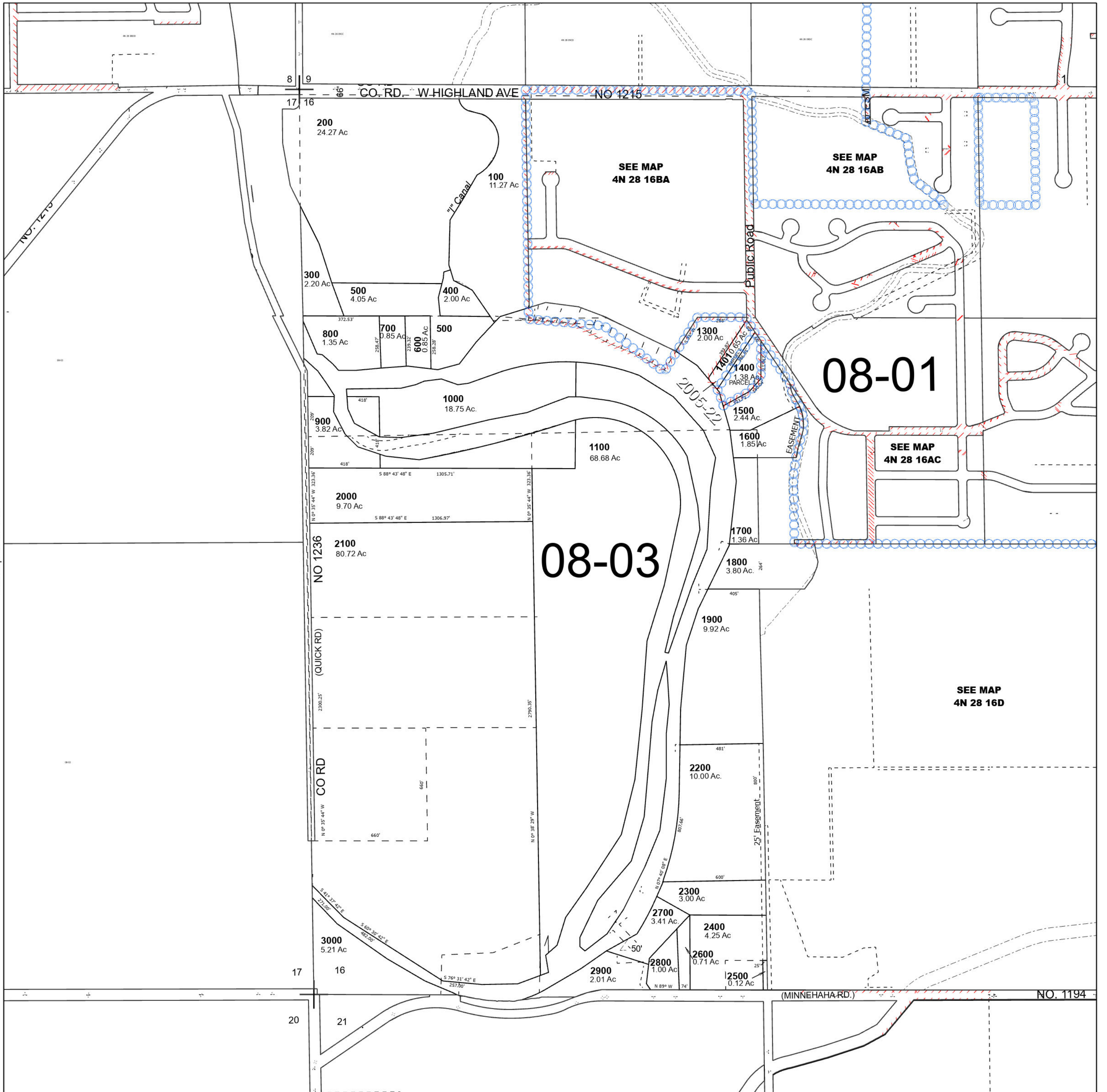
Cancelled Tax Lots
1200

SEC 16 T4N R28E WM UMATILLA COUNTY

4N 28 16

SCALE 1" = 400'

See Map 4N 28 09CC



See Map 4N 28 17D

See Map 4N 28 16D

Revised 6/28/2023

See Map 4N 28 21B

4N 28 16