

This map was prepared for Assessment & Taxation purposes only and was NOT prepared nor is it suitable for legal, engineering or surveying purposes.

# NW 1/4 SW 1/4 SEC 15 T4N R28E WM

## UMATILLA COUNTY

SCALE 1" = 100'

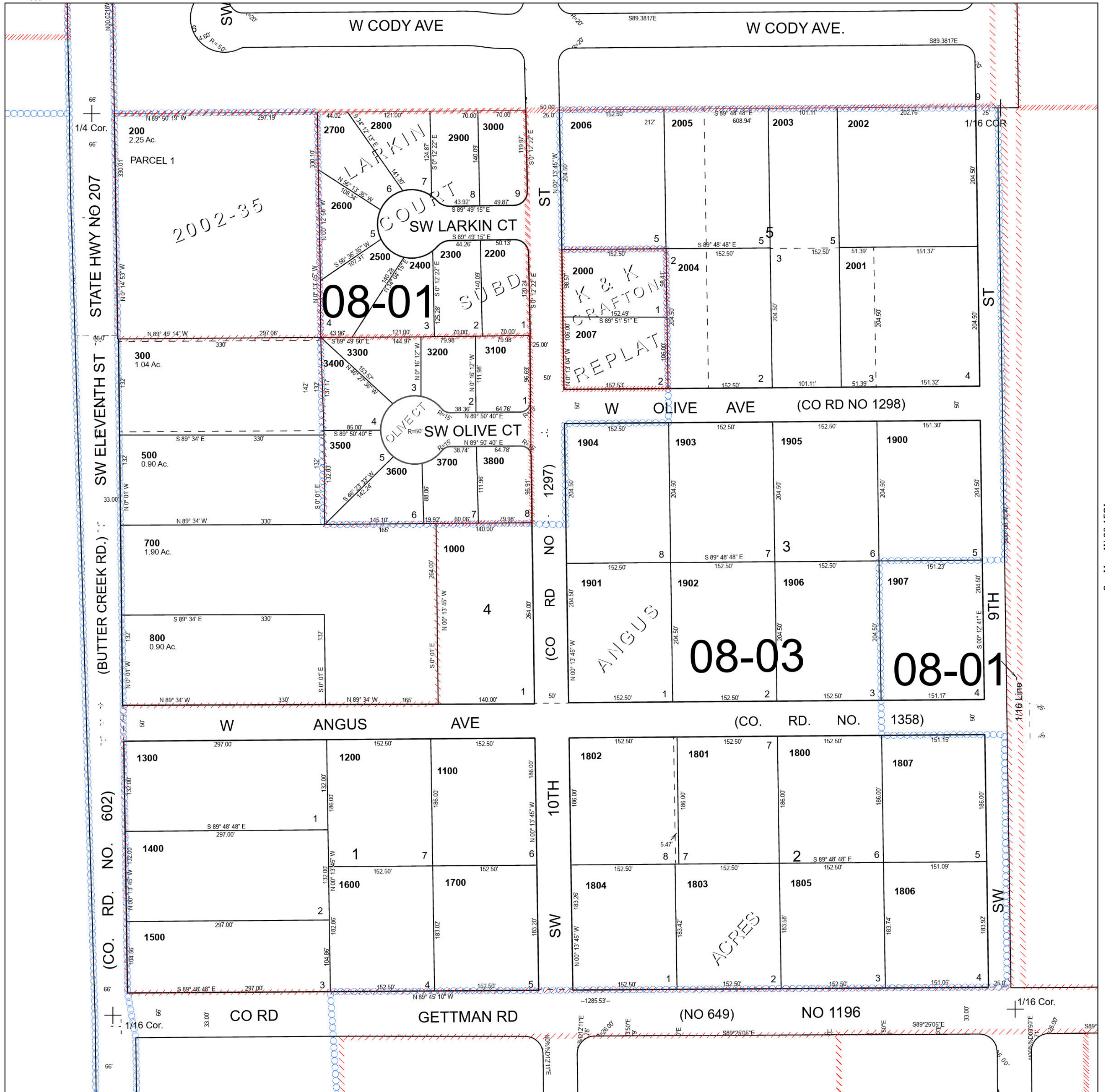
Hermiston

### 4N 28 15CB

Cancelled Tax Lots

- 100 1808
- 101 2100
- 102
- 103
- 104
- 105
- 301
- 400
- 600
- 900

See Map 4N 28 15BC



See Map 4N 28 16D

See Map 4N 28 15CA