

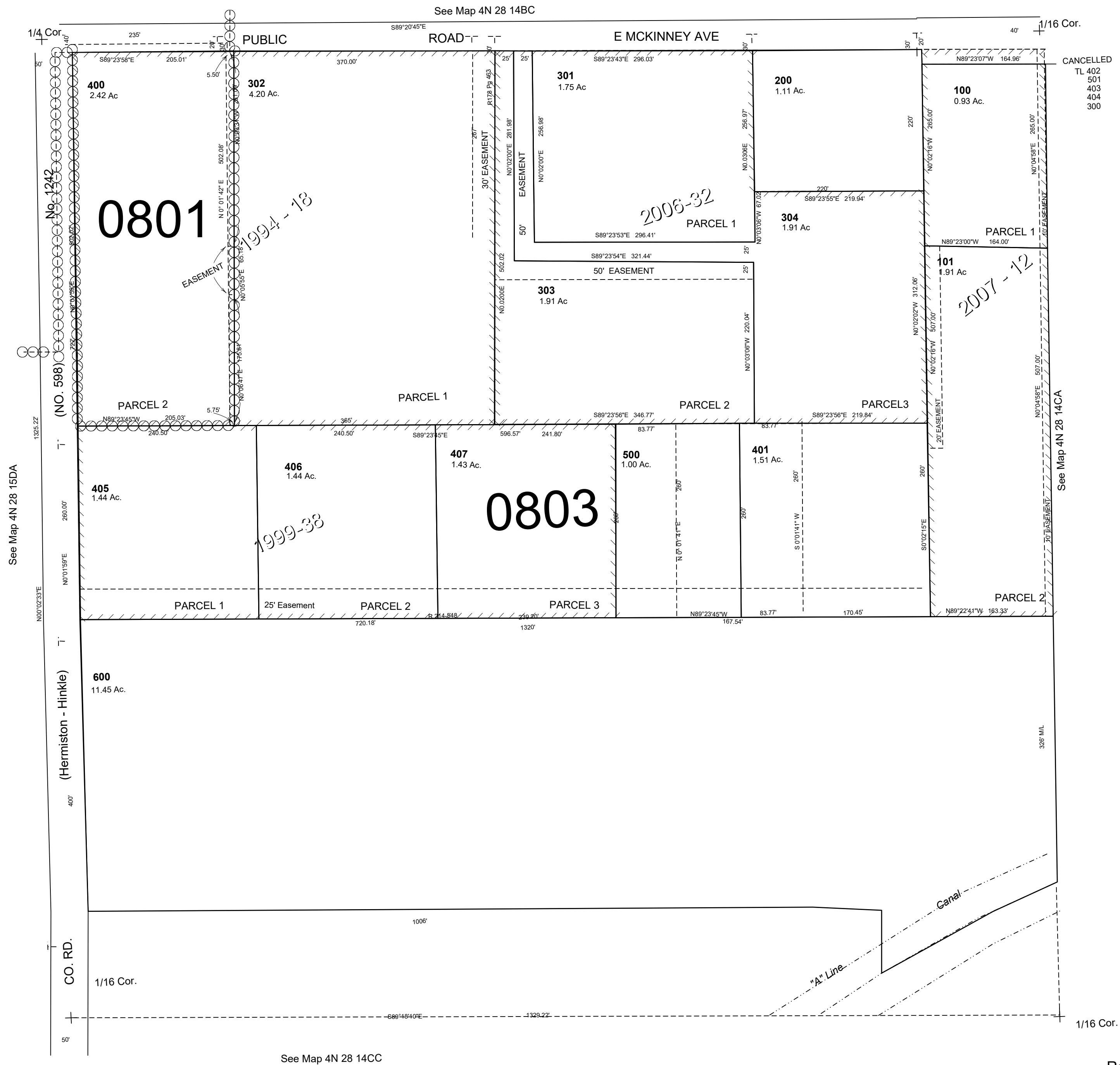
This map was prepared for Assessment & Taxation purposes only and was NOT prepared nor is it suitable for legal, engineering or surveying purposes.

NW1/4 SW1/4 SEC 14 T4N R28E WM UMATILLA COUNTY

4N2814CB

AERIAL PHOTO NO 2P-22

SCALE 1"=100'



Revised: 12-12-19

4N2814CB