

This map was prepared for Assessment & Taxation purposes only and was NOT prepared nor is it suitable for legal, engineering or surveying purposes.

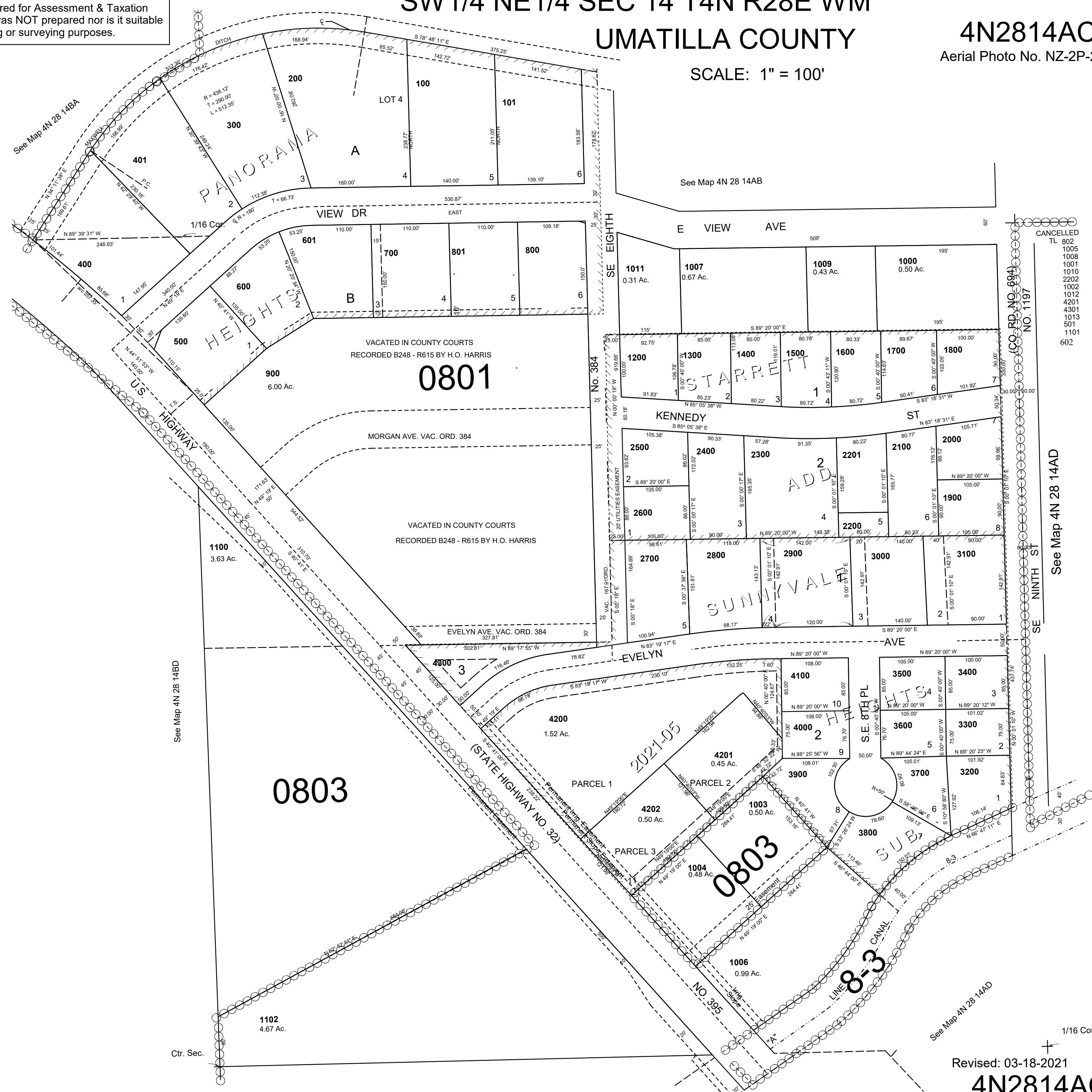
SW1/4 NE1/4 SEC 14 T4N R28E WM

UMATILLA COUNTY

4N2814AC

Aerial Photo No. NZ-2P-23

SCALE: 1" = 100'



1/16 Cor.

Revised: 03-18-2021

4N2814AC